

시험성적서 번호 F690101/LF-CTSAYGU22-00260K

발행일: 2022. 01. 10 페이지: 1/ 4

고객명 : (주) 세아특수강
 주소 : 경상북도 포항시 남구 괴동로 40 (장흥동)



고객으로부터 제공받은 시료에 대한 정보는 다음과 같습니다.

SGS 파일 번호 : AYGU22-00260K
 제품명 : SUM22
 아이템 번호 : N/A
 시료 접수 날짜 : 2022. 01. 03
 시험 시행 기간 : 2022. 01. 03 ~ 2022. 01. 10
 시험 결과 : 자세한 결과는 다음 장을 참조하세요.

한국에스지에스 (주) / 부산시험소



이 동 주 / 기술책임자

이 시험결과는 의뢰자가 제공한 시료 및 시료명에 한정된 결과로써 전체 제품에 대한 품질을 보증하지 않으며, KS Q ISO/IEC 17025(KOLAS 인정)과 관련이 없습니다. 이 시험성적서는 홍보, 선전, 광고 및 소송용으로 사용될 수 없으며, 사전동의 없이 일부만 발췌하여 사용할 수 없습니다. 시험성적서의 진위여부는 <<http://rohs.kr.sgs.com/checkreport/main>>에서 확인 가능합니다.

This document is issued by the Company subject to its General Conditions of Service printed overleaf, available on request or accessible at <<http://www.sgs.com/en/Terms-and-Conditions.aspx>> and, for electronic format documents, subject to Terms and Conditions for Electronic Documents at <<https://www.sgs.com/en/terms-and-conditions/terms-e-document>>. Attention is drawn to the limitation of liability, indemnification and jurisdiction issues defined therein. Any holder of this document is advised that information contained hereon reflects the Company's findings at the time of its intervention only and within the limits of Client's instructions, if any. The Company's sole responsibility is to its Client and this document does not exonerate parties to a transaction from exercising all their rights and obligations under the transaction documents. This document cannot be reproduced except in full, without prior written approval of the Company. Any unauthorized alteration, forgery or falsification of the content or appearance of this document is unlawful and offenders may be prosecuted to the fullest extent of the law. Unless otherwise stated the results shown in this test report refer only to the sample(s).



시험성적서 번호 F690101/LF-CTSAYGU22-00260K

발행일: 2022. 01. 10 페이지: 2 / 4

시료번호 : AYGU22-00260K.001
 시료명 : SUM22
 아이템번호 : N/A
 재질 : N/A

Heavy Metals

분석항목	단위	시험방법	검출한계	결과
Cadmium (Cd)	mg/kg	With reference to IEC 62321-5 : 2013, by ICP-OES	0.5	불검출
Lead (Pb)	mg/kg	With reference to IEC 62321-5 : 2013, by ICP-OES	5	불검출
Mercury (Hg)	mg/kg	With reference to IEC 62321-4 : 2013+A1 : 2017, by ICP-OES	2	불검출
Hexavalent Chromium (Cr VI) *	µg/cm ²	With reference to IEC 62321-7-1 : 2015, by UV-Vis	0.1	불검출

Flame Retardants-PBBs/PBDEs

분석항목	단위	시험방법	검출한계	결과
Monobromobiphenyl	mg/kg	With reference to IEC 62321-6 : 2015, by GC-MS	5	불검출
Dibromobiphenyl	mg/kg	With reference to IEC 62321-6 : 2015, by GC-MS	5	불검출
Tribromobiphenyl	mg/kg	With reference to IEC 62321-6 : 2015, by GC-MS	5	불검출
Tetrabromobiphenyl	mg/kg	With reference to IEC 62321-6 : 2015, by GC-MS	5	불검출
Pentabromobiphenyl	mg/kg	With reference to IEC 62321-6 : 2015, by GC-MS	5	불검출
Hexabromobiphenyl	mg/kg	With reference to IEC 62321-6 : 2015, by GC-MS	5	불검출
Heptabromobiphenyl	mg/kg	With reference to IEC 62321-6 : 2015, by GC-MS	5	불검출
Octabromobiphenyl	mg/kg	With reference to IEC 62321-6 : 2015, by GC-MS	5	불검출
Nonabromobiphenyl	mg/kg	With reference to IEC 62321-6 : 2015, by GC-MS	5	불검출
Decabromobiphenyl	mg/kg	With reference to IEC 62321-6 : 2015, by GC-MS	5	불검출
Monobromodiphenyl ether	mg/kg	With reference to IEC 62321-6 : 2015, by GC-MS	5	불검출
Dibromodiphenyl ether	mg/kg	With reference to IEC 62321-6 : 2015, by GC-MS	5	불검출
Tribromodiphenyl ether	mg/kg	With reference to IEC 62321-6 : 2015, by GC-MS	5	불검출
Tetrabromodiphenyl ether	mg/kg	With reference to IEC 62321-6 : 2015, by GC-MS	5	불검출
Pentabromodiphenyl ether	mg/kg	With reference to IEC 62321-6 : 2015, by GC-MS	5	불검출

This document is issued by the Company subject to its General Conditions of Service printed overleaf, available on request or accessible at <http://www.sgs.com/en/Terms-and-Conditions.aspx> and, for electronic format documents, subject to Terms and Conditions for Electronic Documents at <https://www.sgs.com/en/terms-and-conditions/terms-e-document>. Attention is drawn to the limitation of liability, indemnification and jurisdiction issues defined therein. Any holder of this document is advised that information contained hereon reflects the Company's findings at the time of its intervention only and within the limits of Client's instructions, if any. The Company's sole responsibility is to its Client and this document does not exonerate parties to a transaction from exercising all their rights and obligations under the transaction documents. This document cannot be reproduced except in full, without prior written approval of the Company. Any unauthorized alteration, forgery or falsification of the content or appearance of this document is unlawful and offenders may be prosecuted to the fullest extent of the law. Unless otherwise stated the results shown in this test report refer only to the sample(s).

MQP-708-001-F13 (01)

SGS Korea Co., Ltd.

50, Sinsan-ro 29beon-gil, Saha-gu, Busan, Korea 49432
 t +82 (0)51 795 7300 f +82 (0)51 795 7310 <http://www.sgsaroup.kr>

Member of the SGS Group (Société Générale de Surveillance)



시험성적서 번호 F690101/LF-CTSAYGU22-00260K

발행일: 2022. 01. 10 페이지: 3 / 4

시료번호 : AYGU22-00260K.001
 시료명 : SUM22
 아이템번호 : N/A
 재질 : N/A

Flame Retardants-PBBs/PBDEs

분석항목	단위	시험방법	검출한계	결과
Hexabromodiphenyl ether	mg/kg	With reference to IEC 62321-6 : 2015, by GC-MS	5	불검출
Heptabromodiphenyl ether	mg/kg	With reference to IEC 62321-6 : 2015, by GC-MS	5	불검출
Octabromodiphenyl ether	mg/kg	With reference to IEC 62321-6 : 2015, by GC-MS	5	불검출
Nonabromodiphenyl ether	mg/kg	With reference to IEC 62321-6 : 2015, by GC-MS	5	불검출
Decabromodiphenyl ether	mg/kg	With reference to IEC 62321-6 : 2015, by GC-MS	5	불검출

- 주) (1) 불검출 : 검출한계 미만
 (2) *= a. 검출 값이 0.13 ug/cm2 이상이면 Positive 로 결과 값 입력
 b. 검출 값이 0.10 ug/cm2 이하이면 Negative 로 결과 값 불검출로 입력
 c. 검출 값이 0.10 ug/cm2 과 0.13 ug/cm2 사이의 값이면 inconclusive 로 의심이 됨.(3회 재확인 시험을 진행해야함.)

This document is issued by the Company subject to its General Conditions of Service printed overleaf, available on request or accessible at <http://www.sgs.com/en/Terms-and-Conditions.aspx> and, for electronic format documents, subject to Terms and Conditions for Electronic Documents at <https://www.sgs.com/en/terms-and-conditions/terms-e-document>. Attention is drawn to the limitation of liability, indemnification and jurisdiction issues defined therein. Any holder of this document is advised that information contained hereon reflects the Company's findings at the time of its intervention only and within the limits of Client's instructions, if any. The Company's sole responsibility is to its Client and this document does not exonerate parties to a transaction from exercising all their rights and obligations under the transaction documents. This document cannot be reproduced except in full, without prior written approval of the Company. Any unauthorized alteration, forgery or falsification of the content or appearance of this document is unlawful and offenders may be prosecuted to the fullest extent of the law. Unless otherwise stated the results shown in this test report refer only to the sample(s).

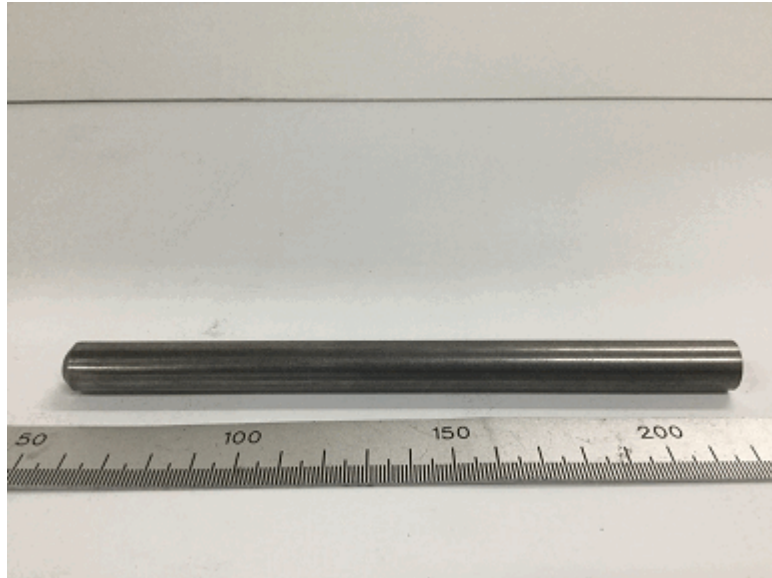
MQP-708-001-F13 (01)

SGS Korea Co.,Ltd.

50, Sinsan-ro 29beon-gil, Saha-gu, Busan, Korea 49432
 t +82 (0)51 795 7300 f +82 (0)51 795 7310 <http://www.sgsaroup.kr>

Member of the SGS Group (Société Générale de Surveillance)

접수된 시료의 사진 :



AYGU22-00260K.001

*** 끝 ***

This document is issued by the Company subject to its General Conditions of Service printed overleaf, available on request or accessible at <http://www.sgs.com/en/Terms-and-Conditions.aspx> and, for electronic format documents, subject to Terms and Conditions for Electronic Documents at <https://www.sgs.com/en/terms-and-conditions/terms-e-document>. Attention is drawn to the limitation of liability, indemnification and jurisdiction issues defined therein. Any holder of this document is advised that information contained hereon reflects the Company's findings at the time of its intervention only and within the limits of Client's instructions, if any. The Company's sole responsibility is to its Client and this document does not exonerate parties to a transaction from exercising all their rights and obligations under the transaction documents. This document cannot be reproduced except in full, without prior written approval of the Company. Any unauthorized alteration, forgery or falsification of the content or appearance of this document is unlawful and offenders may be prosecuted to the fullest extent of the law. Unless otherwise stated the results shown in this test report refer only to the sample(s).