

SPECIFICATION FOR APPROVAL

MESSRS : SUHKWANG

Description	Item
SMD INDUCTOR	SC4532D_Series

DATE : 2006. 03. 16.



株式
會社

光 星 電 子



HEAD OFFICE

KWANG SUNG ELECTRONICS CO.,LTD.

108, 4 - KA, WONHYO - RO, YONGSAN - KU, SEOUL, KOREA

TEL : 82 - 2 - 713 - 6001

FAX : 82 - 2 - 712 - 0001

82 - 2 - 711 - 2001

R&D CENTER

KWANG SUNG ELECTRONICS H/K CO.,LTD. KOREA BRANCH

201, WORLD VENTURE TOWN 60 - 24, GASAN - DONG

GEUMCHUN - GU, SEOUL, KOREA

TEL : 82 - 2 - 2108 - 3590, 3595

FAX : 82 - 2 - 2108 - 3535

HONG KONG OFFICE

KWANG SUNG ELECTRONICS H.K CO.,LTD.

UNIT7 - 9, 13/F, WAH WAI IND. CENTRE, 38 - 40

AU PUI WAN ST., FO TAN, N.T., HONG KONG

TEL : 852 - 2602 - 6609

FAX : 852 - 2602 - 6490

CHINA FACTORY

SHEN ZHEN KWANG SUNG ELECTRONICS CO.,LTD.

SHITOUZHAN INDUSTRIAL ZONE, ZHUAN CHANG

VILLAGE, SHIYAN TOWN BAOAN DISTRICT,

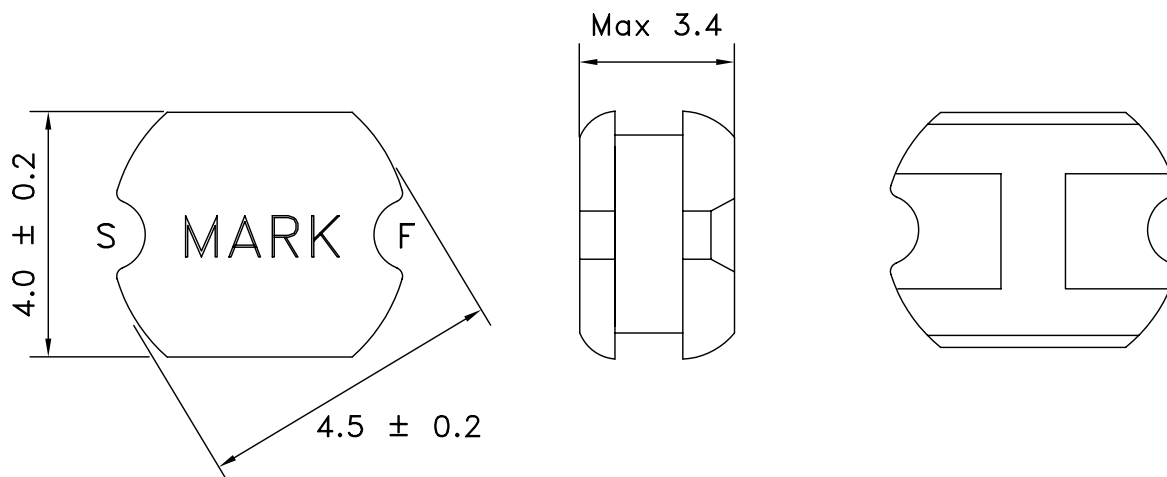
SHENZHEN GUANG DONG PROVINCE, CHINA

TEL : 86 - 755 - 2765 - 4650

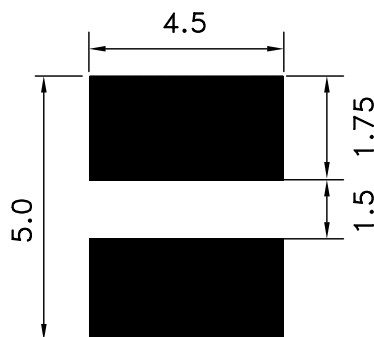
FAX : 86 - 755 - 2765 - 6007

MESSRS.: SUHKWANG	SMD INDUCTOR SPECIFICATION	DATE: 2006. 03. 16.
TYPE: SC4532D Series		

1. ITEM : SMD CHOKE COIL (SC4532D Series)
2. DIMENSION (UNIT : mm)



(SOLDER LAND PATTERN)



3. ORDERING CODE

SC4532D - 220 K

SC4532D : Series Name
 220 : Inductance (220 = 22uH)
 K : Tolerance

	DESCRIPTION	DRAWN	DESIGNED	CHECKED	APPROVED
				技術 06.03.16 權恩洙	技術 06.03.16 張東俊

MESSRS.: SUHKWANG

SPECIFICATION

DATE: 2006. 03. 16.

TYPE: SC4532D Series

4. MATERIALS

NO	PARTS	MATERIAL
1	CORE	DR 4.5 x 3.2 or Equiv.
2	WIRE	POLYURETHANE ENAMELLED COPPER

5. ELECTRICAL CHARACTERISTICS

Ordering Code	Inductance L(μ H)	Tolerance (%)	DC.R(Ω) Max	Rated Current (A)
SC4532D-2R2M	2.2	$\pm 20\%$	0.1	6.0
SC4532D-2R7M	2.7	$\pm 20\%$	0.1	4.9
SC4532D-3R3M	3.3	$\pm 20\%$	0.1	4.1
SC4532D-3R9M	3.9	$\pm 20\%$	0.1	3.3
SC4532D-4R7M	4.7	$\pm 20\%$	0.1	2.7
SC4532D-5R6M	5.6	$\pm 20\%$	0.1	2.3
SC4532D-6R8M	6.8	$\pm 20\%$	0.1	1.8
SC4532D-8R2M	8.2	$\pm 20\%$	0.14	1.6
SC4532D-100K	10	$\pm 10\%$	0.2	1.3
SC4532D-120K	12	$\pm 10\%$	0.28	1.1
SC4532D-150K	15	$\pm 10\%$	0.4	0.9
SC4532D-180K	18	$\pm 10\%$	0.61	0.7
SC4532D-220K	22	$\pm 10\%$	1.2	0.6
SC4532D-270K	27	$\pm 10\%$	1.27	0.45
SC4532D-330K	33	$\pm 10\%$	2.02	0.4
SC4532D-390K	39	$\pm 10\%$	3.0	0.3
SC4532D-470K	47	$\pm 10\%$	3.0	0.3
SC4532D-560K	56	$\pm 10\%$	3.0	0.3
SC4532D-680K	68	$\pm 10\%$	3.0	0.3
SC4532D-101K	100	$\pm 10\%$	1.5	0.2
SC4532D-221K	220	$\pm 10\%$	3.0	0.2

► Maximum rated DC current is that which causes a 10% inductance reduction from the initial value.

► Measuring Freq.(L) : 1KHz

* Measuring Freq. : 1 KHz

* Maximum rated DC current is that which causes a 20% inductance reduction or temperature rising $t=40^{\circ}\text{C}$ from the initial value.