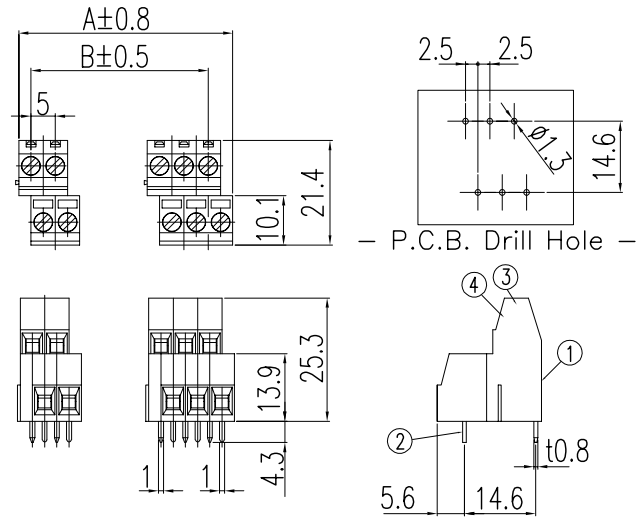
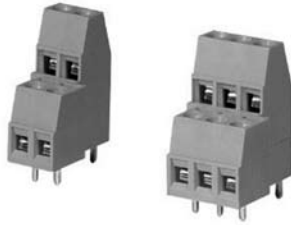


BR-500C2

(4,6P ASSEMBLE)



- Rating : 250V 10A
- Insulation Resistance : More Than 1000MΩ DC 500V
- Withstand Voltage : AC2000V Per Minute
- Wire Size / Range : AWG18~26
- Maximum Acceptable Temperature : -40°C ~ +105°C

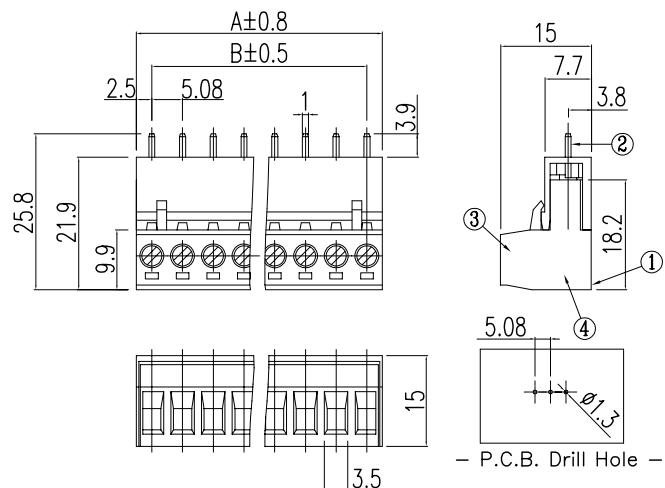
No	Component Part	Material	Standard	Plated	Remark
1	Frame	P.A.66	UL94V-0	-	-
2	Terminal	BRASS	C2680R	Sn	-
3	Screw	STEEL	-	Ni	M2.6 * 7
4	Clamp	BRASS	C2680R	Ni	-

A-B Dimension

P	4	6	8	10	12	14	16	18	20	∞
A	12.5	17.5	22.5	27.5	32.5	37.5	42.5	47.5	52.5	...
B	5	10	15	20	25	30	35	40	45	...

BR-508CH

(2~12P)



- Rating : 300V 10A
- Insulation Resistance : More Than 1000MΩ DC 500V
- Withstand Voltage : AC2500V Per Minute
- Wire Size / Range : AWG12~26
- Maximum Acceptable Temperature : -40°C ~ +105°C

No	Component Part	Material	Standard	Plated	Remark
1	Frame	P.A.66	UL94V-0	-	-
2	Terminal	BRASS	C2680R	Ni	-
3	Screw	STEEL	-	Ni	M3 * 5
4	Clamp	BRASS	C2680R	Ni	-

A-B Dimension

P	1	2	3	4	5	6	7	8	9	10	11	12
A	-	10.2	15.2	20.3	25.4	30.5	35.6	40.6	45.7	50.8	55.9	61
B	-	5.08	10.2	15.2	20.3	25.4	30.5	35.6	40.6	45.7	50.8	55.9