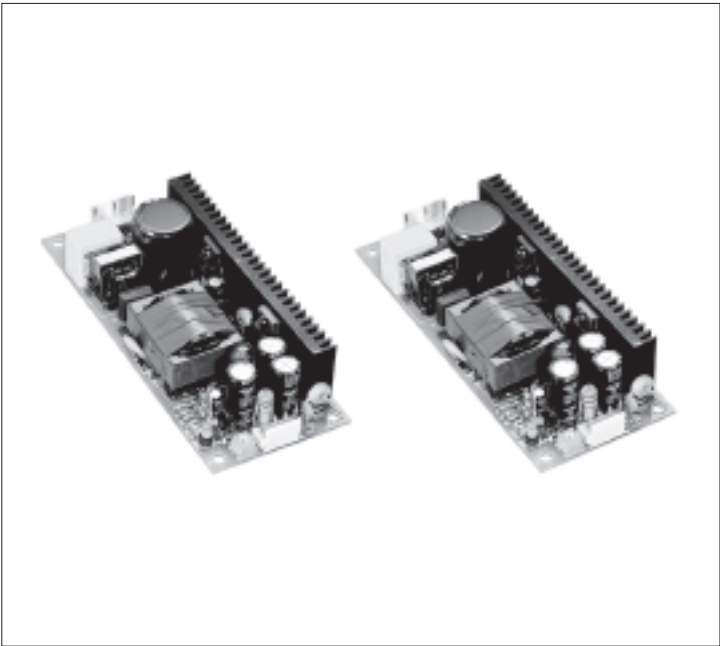


30SN Series



30W 1-Channel Non-Cover

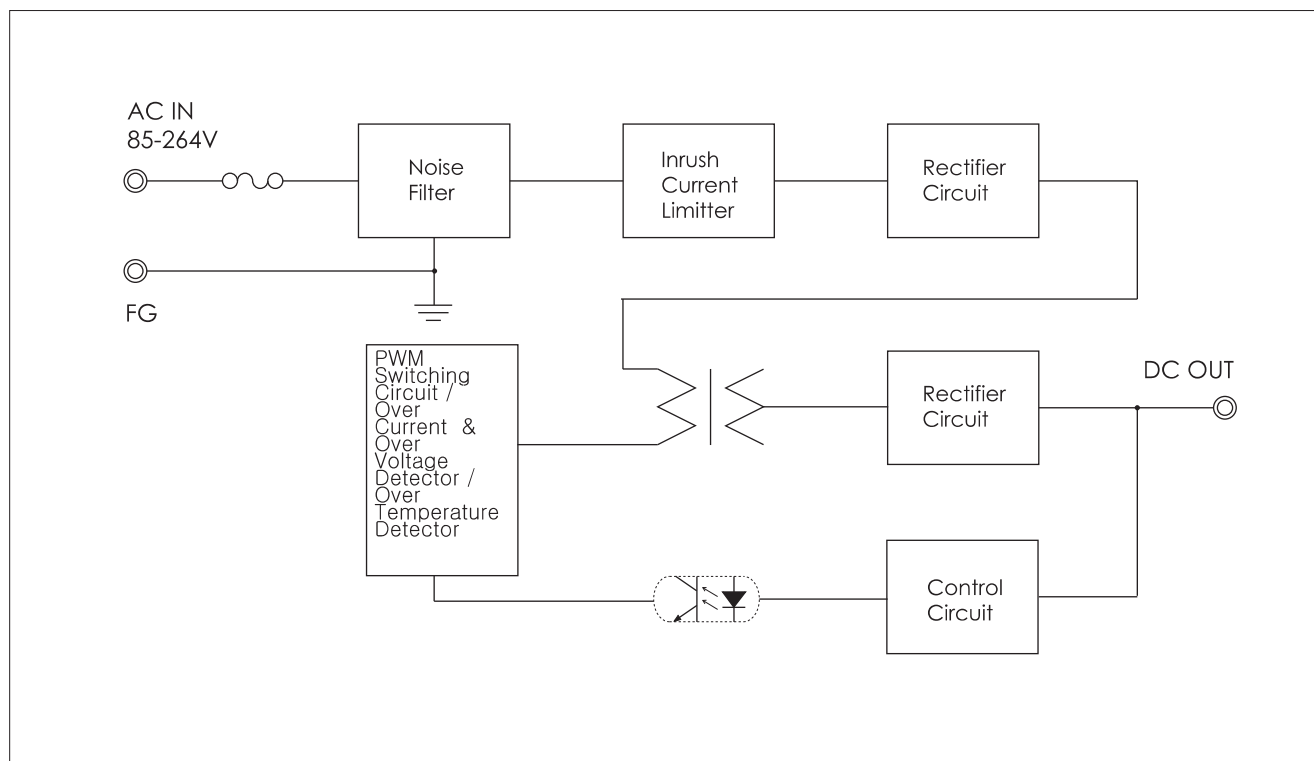
- **5V6A/9V3.3A/12V2.5A/15V2A/24V1.2A/36V0.8A/48V0.6A Output**
- **Wide Input Voltage Range (AC85-264V)**
- **Built-in Inrush Current Limiter, Over Current Protector and Over Voltage Protector**
- **Over Temperature Protection**
- **Auto-Restart Mode**

SPECIFICATIONS

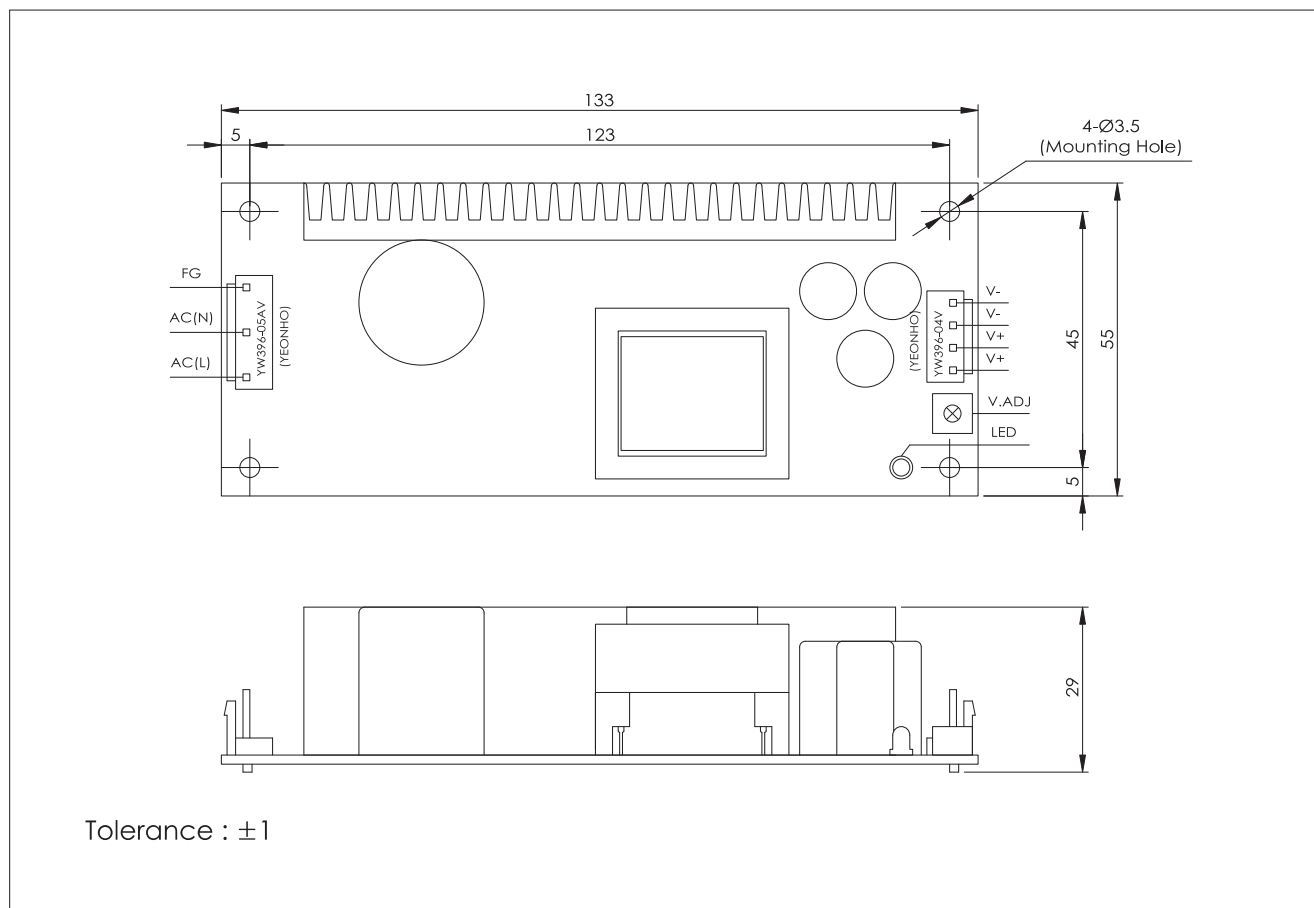
Item		UP30S05N	UP30S09N	UP30S12N	UP30S15N	UP30S24N	UP30S36N	UP30S48N
INPUT	VOLTAGE	AC85~264V 0.7A typ (ACIN 110V, Io=100%) 0.35A typ (ACIN 220V, Io=100%)						
	FREQUENCY	50/60Hz(47~63Hz)						
	EFFICIENCY	75% Typ	75% Typ	80% Typ	80% Typ	82% Typ	83% Typ	85% Typ
	INRUSH CURRENT	20A Typ(ACIN 110V, Io=100%)/ 40A Typ(ACIN 220V, Io=100%) at cold start						
OUTPUT	VOLTAGE [V]	5	9	12	15	24	36	48
	CURRENT [A]	6.0	3.3	2.5	2.0	1.2	0.8	0.6
	LINE REGULATION [mV]	25 Max	45 Max	60 Max	75 Max	120 Max	180 Max	240 Max
	LOAD REGULATION [mV]	50 Max	90 Max	120 Max	150 Max	240 Max	360 Max	480 Max
	RIPPLE [mVp-p]	50 Max	90 Max	120 Max	150 Max	240 Max	360 Max	480 Max
	RIPPLE NOISE [mVp-p]	100 Max	140 Max	170 Max	200 Max	290 Max	410 Max	530 Max
	TEMPERATURE DRIFT,0-50℃ [mV]	50 Max	90 Max	120 Max	150 Max	240 Max	360 Max	480 Max
	RISE TIME [msec]	100 Max (ACIN 85V, Io=100%)						
HOLDING TIME [msec]	10 Typ (ACIN 85V, Io=100%)							
PROTEC-TION	OVER CURRENT PROTECTION	Works at over 110% of rating and recovers automatically						
	OVER VOLTAGE PROTECTION	Works at over 115~140% of rating						
ISOLAT-ION	INPUT-OUTPUT	AC3,000V for 1 minute, DC500V 100Mohm (At room temp. & humid.)						
	INPUT-CASE, FG	AC1,500V for 1 minute, DC500V 100Mohm (At room temp. & humid.)						
	OUTPUT-CASE	AC500V for 1 minute, DC500V 100Mohm (At room temp. & humid.)						
ENVIRON-MENT	OPERATING TEMP. & HUMID.	0~+50℃, 20~90%RH (Non condensing)						
	STORAGE TEMP. & HUMID.	-20~+75℃, 20~90%RH (Non condensing)						
	VIBRATION	10~55Hz at 1G 3 minutes period, 30 minutes along X, Y and Z axis						
	IMPACT	10G for 20 msec, Once on each X, Y and Z axis						
	APPROVALS							

30SN Series

BLOCK DIAGRAM

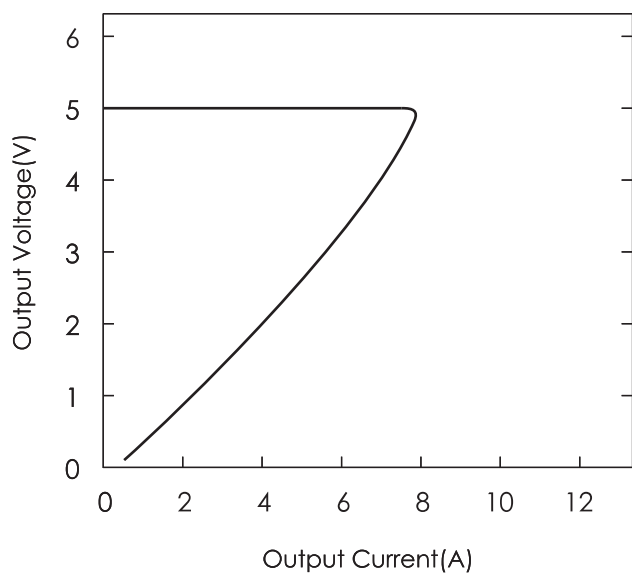


DIMENSIONS(UNITS : MM)

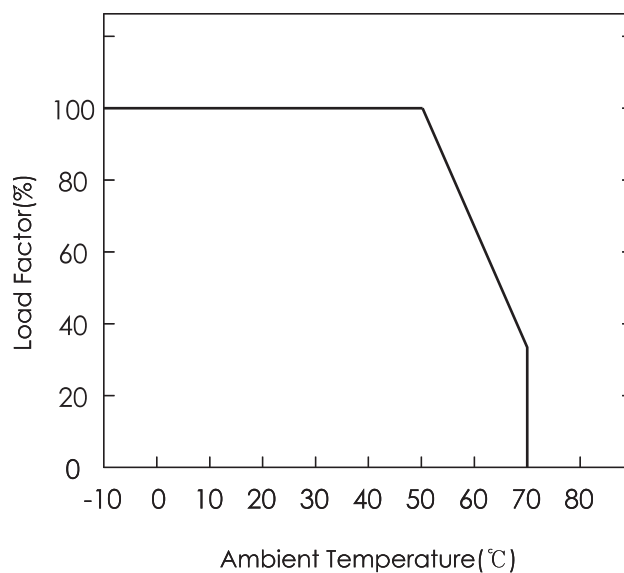


2. 30S/30SN Series(30S05)

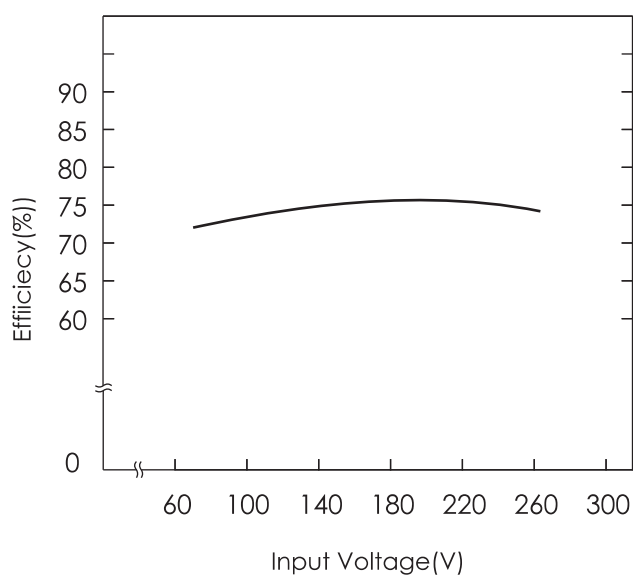
A. OVER CURRENT CHARACTERISTICS



B. DERATING CHARACTERISTICS



C. EFFICIENCY CHARACTERISTICS



D. RISING/FALLING TIME CHARACTERISTICS

