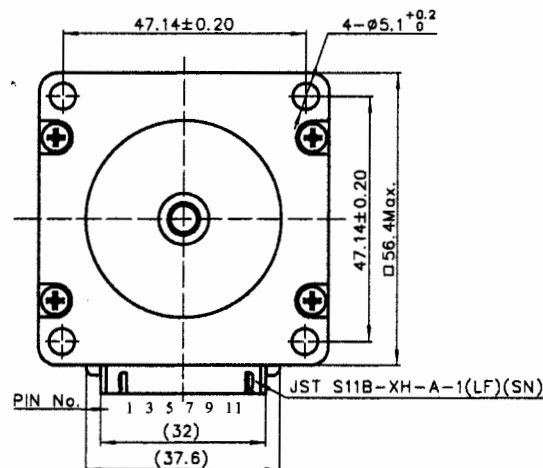
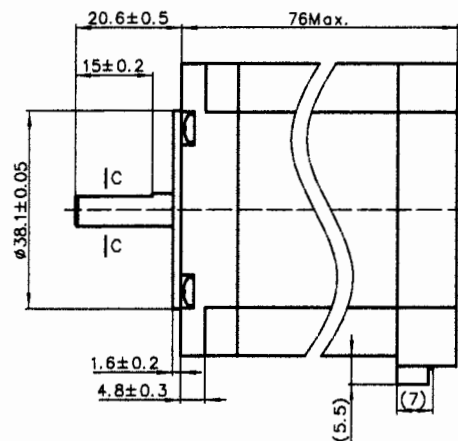
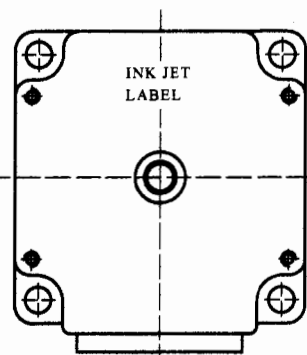
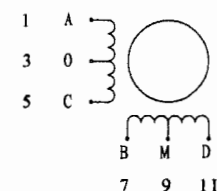


4611110008666



接线图

Wiring Diagram



励磁顺序 vs. 旋转方向

Exciting Sequence vs. Direction of Rotation

STEP	A	B	C	D	M	I
1	-	-	-	-	+	+
2	-	-	-	-	+	+
3	-	-	-	-	+	+
4	-	-	-	-	+	+

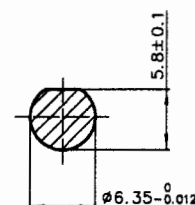
从安装面看为顺时针方向

Clockwise view from mounting side

规格 Specifications

1. 相数 Number of Phase	4
2. 步距角 Step Angle	1.8°
3. 额定电压 Rated Voltage	4.5V DC
4. 额定电流 Rated Current	2.0A
5. 保持力矩 Holding Torque	1.2N.m Min. (Two phases on rated current)
6. 相电阻 Phase Resistance	2.25Ω±10% (20°C)
7. 相电感 Phase Inductance	4.5mH±20% (1kHz 1V rms)
8. 转子惯量 Rotor Inertia	460g.cm <sup>2</sup>
9. 电机重量 Motor Weight	1000g
10. 绝缘等级 Insulation Class	B(130°C)

C-C(2:1)



铭牌 Label Detail

MOONS' STEPPING MOTOR  
TYPE 23HS3003-07  
XXXXXXXX YY/MM/DD  
MADE IN CHINA

Work Order  
加工单号Date Format  
日期格式

保 密

L			Unit:mm	批准 Approve	2011.03.15	MOONS'		Hybrid Stepping Motor	
K			第一角画法 FIRST ANGLE METHOD	标准化 Standard	2011.03.15				
J			未注公差与角度尺寸公差 Tolerances for linear and angular dimensions without individual tolerance indications	工艺 Technology	2011.03.15	Shanghai Moons' Electric Co., Ltd.			
I			GB/T 1804-m eqv ISO 2768-1-m	审核 Check	2011.03.15				
H			未注形位公差与位置尺寸公差 Geometrical tolerance for features without individual tolerance indications	设计 Design	2011.03.14	This document is released for information only. Its reproduction in whole or in part or its dissemination to third parties is prohibited. All trademarks and registered trademarks appearing on this document are the property of their respective owners.			
G			GB/T 1184-K eqv ISO 2768-2-K						
A	原始版本 Original revision	2011.03.14		NAMES	SIGNATURE	DATE	Type: 23HS3003-07	Rev. A	SCALE 1:1
REV.	版本记录 REVISION RECORD	DATE	UNLESS OTHERWISE SPECIFIED						
1	2	3	4	5	6	7	8		