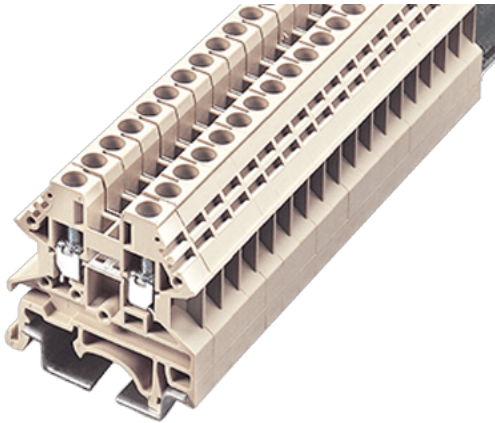


DK4N

DIN Rail Terminal Blocks > Screw Connection



circuit diagram

Product Description

M3, 600V, 30A , Gray color

General information

Short description	DIN rail terminal blocks , Feed through terminal blocks
Connection method	Screw connection
Type of locking	Rail mounting
Category	Feed through terminal blocks
Thread	M3
Level	Single level
Connection points	2

Material information

Insulation material	PA66
Flame retardant rating , compliant with UL94	V0
Color	Gray
Conductor material	Copper Alloy
Plating of conductor surface	Tinned

Connection data-UL

Stripping Length mm	9~11
---------------------	------



Slotted screwdriver size (Blade thickness x Width) mm	0.6x3.5
Philips screwdriver size	PH1
Rated torque (N.m)	0.6
Mounting rail	TS-35/TS-32
End cover plate required	YES
PE connections	NO
Rated voltage V (UL/CUL standard group B)	600
Rated current A (UL/CUL standard group B)	30
AWG, compliant with UL/CUL, Sol. max (group B)	10
AWG, compliant with UL/CUL, Sol. min (group B)	22
AWG, compliant with UL/CUL, Str. max (group B)	10
AWG, compliant with UL/CUL, Str. min (group B)	22
Rated voltage V (UL/CUL standard group C)	600
Rated current A (UL/CUL standard group C)	30
AWG, compliant with UL/CUL, Sol. max (group C)	10
AWG, compliant with UL/CUL, Sol. min (group C)	22
AWG, compliant with UL/CUL, Str. max (group C)	10
AWG, compliant with UL/CUL, Str. min (group C)	22
Rated voltage V (UL/CUL standard group D)	600
Rated current A (UL/CUL standard group D)	5
AWG, compliant with UL/CUL, Sol. max (group D)	10
AWG, compliant with UL/CUL, Sol. min (group D)	22
AWG, compliant with UL/CUL, Str. max (group D)	10
AWG, compliant with UL/CUL, Str. min (group D)	22

Connection data-IEC

Rated data	IEC 60947-7-1
Surge voltage category	III
Pollution degree	3
Insulating material group	I
Rated current A	32
Rated voltage V	1000
Rated voltage V (III/3)	1000
Rated impulse voltage KV (II/2)	8

Rated impulse voltage KV (III/2)	8
Rated impulse voltage KV (III/3)	8
Conductor cross section solid. min mm ²	0.34
Conductor cross section solid.max mm ²	4
Conductor cross section stranded. min mm ²	0.34
Conductor cross section stranded. max mm ²	4
Conductor cross section flexible, with max ferrule without plastic sleeve mm ²	4
Conductor cross section flexible, with min ferrule without plastic sleeve mm ²	0.34
Conductor cross section flexible, with max ferrule with plastic sleeve mm ²	4
Conductor cross section flexible, with min ferrule with plastic sleeve mm ²	0.34
2 conductors with same cross section, solid, max mm ²	2.5
2 conductors with same cross section, stranded, max mm ²	2.5
2 conductors with same cross section flexible, with max ferrule without plastic sleeve mm ²	1.5
2 conductors with same cross section flexible, with min ferrule without plastic sleeve mm ²	0.34
2 conductors with same cross section flexible, max twin ferrules with plastic sleeve mm ²	2.5
2 conductors with same cross section flexible, min twin ferrules with plastic sleeve mm ²	0.5

Connection data-EX

Rated surge voltage V	8000
Rated voltage A	630
Rated current A	32
Rated conn mm ²	0.34~4
Operating temperature °C	-20°C~85°C

Environment & Safety

Back of the hand protection (YES or NO)	YES
Finger protection (YES or NO)	YES
Operating temperature. max °C	115
Operating temperature. min °C	-40

Drawings



circuit diagram

Accessories



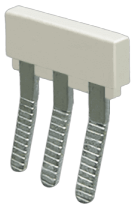
DKNSPS-001

For DK2.5N / DK4N Gray color Using UL94-V0 class of insulation material



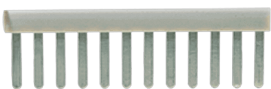
DSS4N-XXP

For DK4N / DK4N-TN / DK4N-TR / DK4D / DKK4N Red color Using UL94-V0 class of insulation material



CSC-4XXPN






For DK4N / DK4N-TN / DK4N-TR / DK4N-TP / DK4N-TG / DK4D / DKK4N Gray color Using UL94-V0 class of insulation material



CSD02-450-A

For DK4 / DK4N / DK4N-TN / DK4N-TR / DK4-TR Gray color Using UL94-V0 class of insulation material

TS-35C

	<p>For TS-35 rail Black color Using UL94-V2 class of insulation material</p>
	<p>TS-32 For DK / DK-PE Series Material is iron Length of 1000mm</p>
	<p>TS-35 For DK / DK-PE / AK / AK-PE / AK..P Series Material is iron Length of 1000mm</p>
	<p>TS-35/15 For DK / DK-PE Series Material is iron Length of 2000mm</p>
	<p>TM27 For DK4N / DK4-PE / DK4D / DK4 / DK4N-PE / DK4N-TN / DK4N-TR / DKK4N White color Using UL94-V2 class of insulation material Marking Label</p>

Approvals

