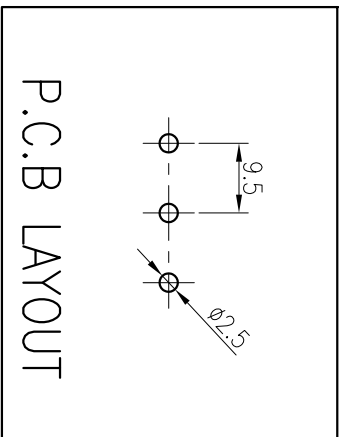
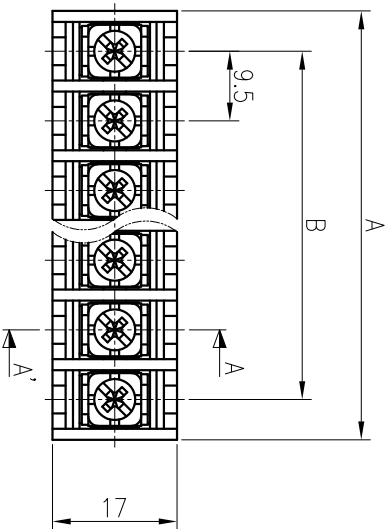
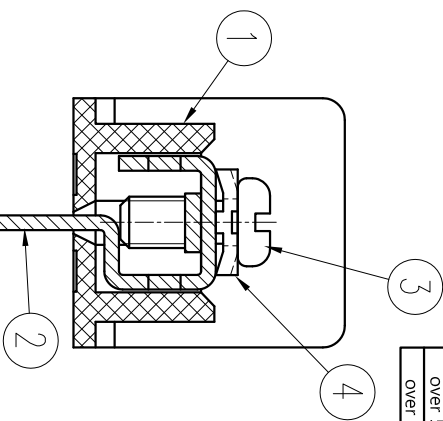


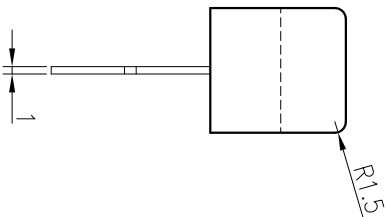
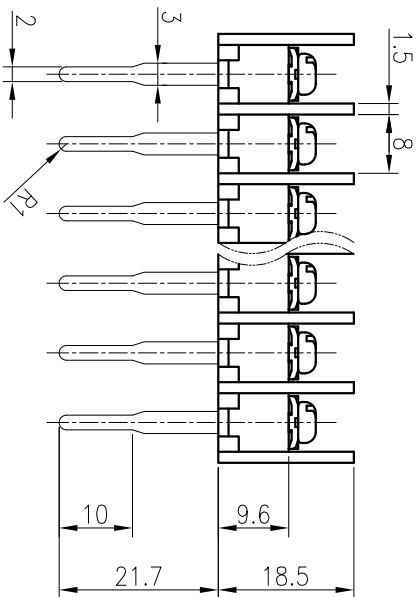
P	1	2	3	4	5	6	7	8	9	10	11	12	13	14	15	16	17	18	19	20
A±0.8	-	20.5	30	39.5	49	58.5	68	77.5	87	96.5	106	115.5	125	134.5	144	153.5	163	172.5	182	191.5
B±0.5	-	9.5	19	28.5	38	47.5	57	66.5	76	85.5	95	104.5	114	123.5	133	142.5	152	161.5	171	180.5



COMMERCIAL TOLERANCE		
0.5 to 3	± 0.12	
over 3 to 6	± 0.16	
over 6 to 10	± 0.18	
over 10 to 18	± 0.22	
over 18 to 30	± 0.25	
over 30 to 50	± 0.30	
over 50 to 80	± 0.35	
over 80 to 120	± 0.45	



SECTION A-A' (2:1)



### SPECIFICATION

- 정격 : 250V 20A
- 절연 저항 : DC 500V 1000MΩ 이상
- 내전압 : AC2000V/min
- 사용온도범위: -40℃ ~ 85℃
- 조임Torque 권고치 : 5kgf·cm 이내

\* 본 제품은 유해물질 관리 기준치를 초과하지 않는 제품임. (RoHS Compliance)

DRAWN	CHECKED	APPROVED	DATE	2010.10.05	TITLE		BR - 950E		DWG NO.		BRT - 042		No.	PART No.	PART NAME	MATERIAL	Q'TY	REMARKS	FINISH
W.R. KIM					UNIT	SCALE							④	BOLT	WASHER	SPCC	P	□7.2X7.2	Ni
10.10.05					mm	1:1							③	BOLT	SCREW	SWCH10A	P	M3.5X8	Ni
													②	DAN-950E	TERMINAL	BRASS	P	C2680R 1/2H t1.0	Sn
													①	SAC-950	FRAME	PBT	1	UI94V-0 (G30)	BK



飛龍電子株式會社

BEE-RYONG  
ELECTRONICS CO.,LTD