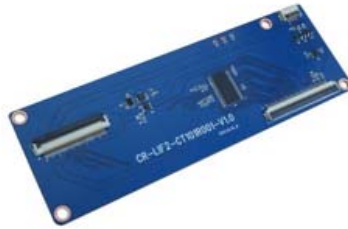


Mango-i.MX 6Quad 10.inch 정전식 LCD Strat Kit



10.1inch 정전식 LCD



CR-LIF2-CT101R001



60Pin FFC Cable



Mango-i.MX 6Quad Main Board



MINI USB Cable



4Pin Cable



USB to UART Module
(CA-U2S101_V1.1)



AC/DC Adapter
(5V/2A)



SDHC Card 8GB
(Bootimg Image 포함)

Feature

Freescall i.MX 6Quad Processor 탑재한 보드

Wincc, Linux , Android 5.0 OS 지원

- i.MX 6Quad Processor 1Ghz
- 2GB DDR3 SDRAM

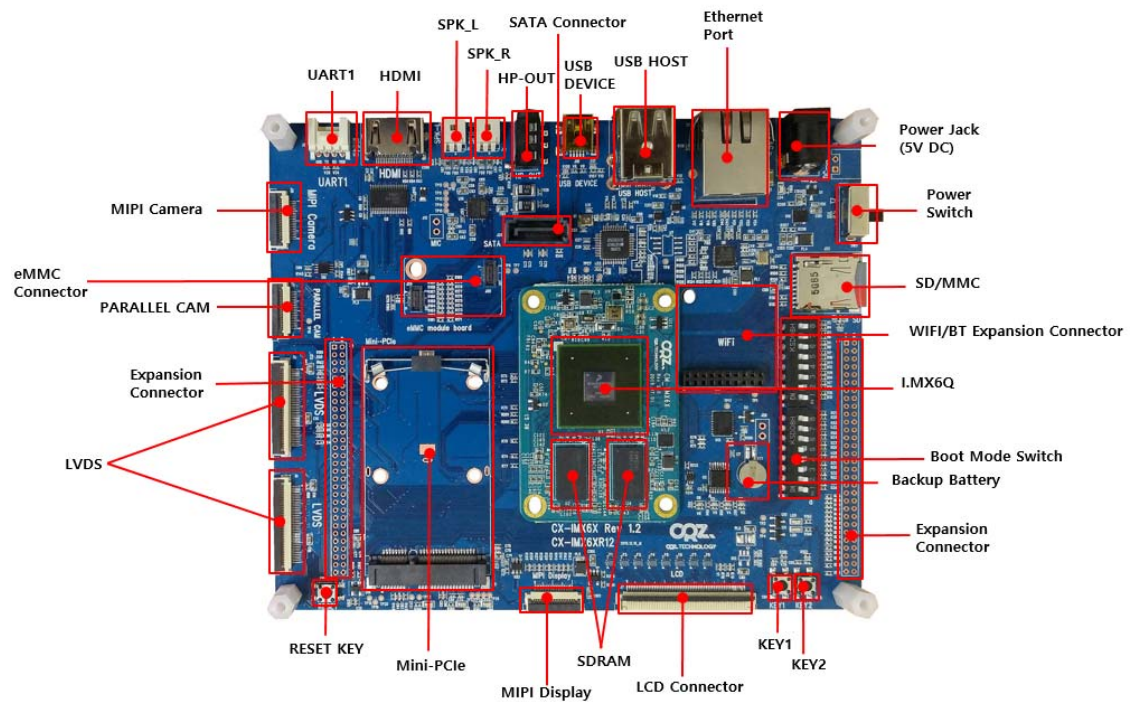
- Connectivity
 - Mini PCIe connector
 - SATA 22-pin connector
 - Micro SD/MMC card slots
 - 10/100/1000 Ethernet Port
 - 1 xMini USB 2.0 OTG connector
 - eMMC 4.3 connector
- Display
 - MIPI DSI 지원
 - 2 x LVDS connectors
 - HDMI display interface connector
- Audio : WM8960 Stereo audio codec
- USB Host 2.0 : 2 Port (Full Speed)
- Camera : Parallel x 1 , MIPI x 1
- UART : UART1 (Debug)
- Power : DC-JACK 5V, 1A
- Button : Button : 2
- Boot Switch : 1
- LED indicator : 2
- Expansion Connector (60x1) : EBI,UART,I2C GPIO etc
- Dimensions : base 120 x 76 mm CPU 50 x 40mm

Package Contents

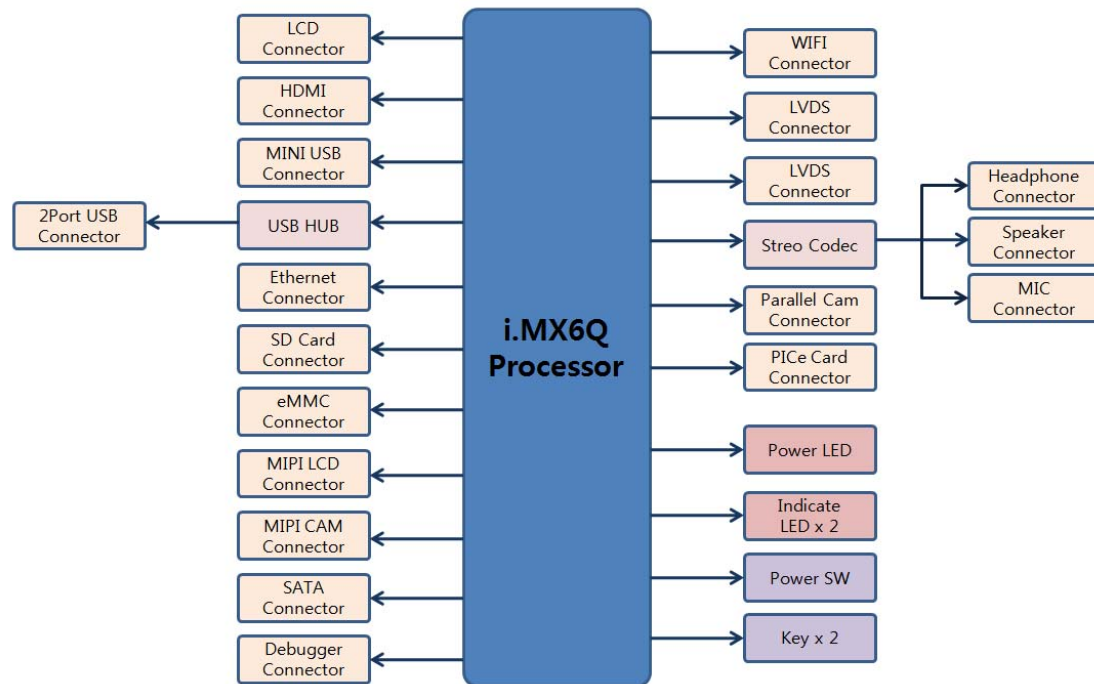
- CM-IMX6Q CPU Board+ CX-IMX6Q Base Board : 1ea
- 10.1inch 정전식 LCD : 1ea
- CR-LIF2-CT101R001 : 1ea
- Mini USB Cable : 2ea
- 4Pin Cable : 1ea
- 60Pin FFC Cable : 1ea
- 5V /2A DC Adapter : 1ea

- USB to Serial UART Module (CA-U2S101_V1.1) : 1ea
- Micro SDHC 8GB card : 1ea

부품 배치도



블록 다이어그램



Documents

- [Quick Start Guide Mango-IMX6Q](#)

[Download Source](#)