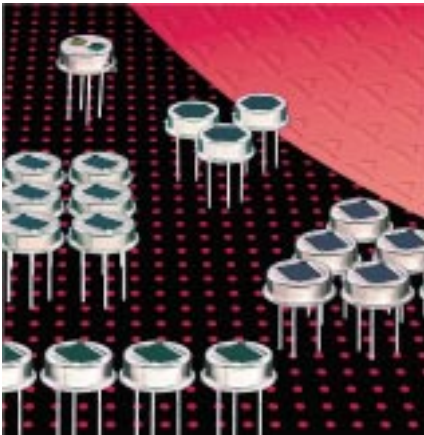


Pyroelectric Detector LHi 968

Dual Element configuration

including FET and optical window

RFi protection

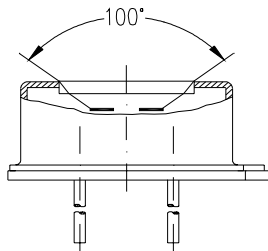


High End Dual Element Detector

Designed for PIR Alarms

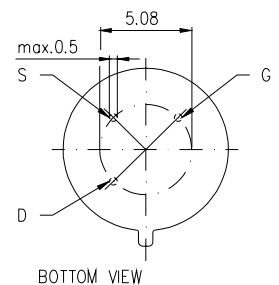
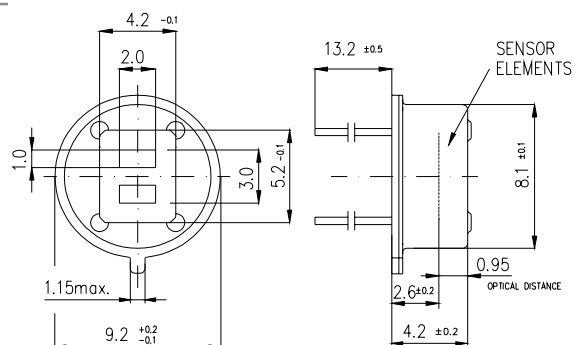
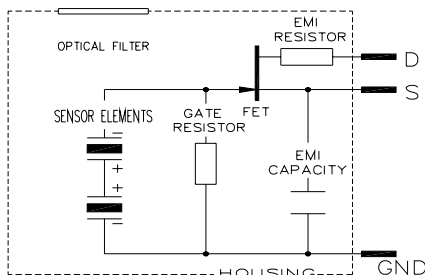
The **LHi 968** pyroelectric infrared-detector series is specially designed for Intrusion Alarm applications. It includes a dual element pyroelectric ceramic with FET in source follower connection and RF protection by a resistor and capacitor circuit.

This detector is available in **TO-5** housing with an infrared filter which protects the elements from strong white light disturbance. It offers high responsivity with excellent common mode performance (match) and low noise.



Field of View

Parameters	LHi 968				
	min	typical	max	units	condition
Element size		2x1		mm ²	(2 Elements)
Responsivity	3300	4000		V/W	1Hz
Match		1	10	%	
Noise		20	50	μV _{pp}	0,3...10 Hz
Offset Voltage	0,2		1,5	V	47kΩ
D*	5x10 ⁷	19x10 ⁷		cmHz/W	1Hz, 1Hz Bw
Output Impedance		5	10	kΩ	RS=47kΩ
Operating Voltage	2		12	V	RS=47kΩ
Field of View, horizontal		100°			unobstructed
vertical		100°			unobstructed
Operating Temperature	-40		85	°C	non permanent
Storage Temperature	-40		85	°C	non permanent



Europe:
PerkinElmer Optoelectronics
 GmbH & CoKG
 Wenzel Jaksch Str 31
 65199 Wiesbaden / Germany
 Phone +49(0)611 492 0
 Fax +49(0)611 492 170

USA:
PerkinElmer Optoelectronics
 44370 Christy Street
 Fremont, CA 94538-3180
 Phone +510 979 6500
 +800 775 6786
 Fax +510 687 1140

Asia: Dimensions in mm
PerkinElmer Optoelectronics
 47, Ayer Rajah Crescent #06-12
 Singapore 139947
 Phone +65 775 2022
 Fax +65 775 1008

Right for modification reserved / WS / 28.8.2003


PerkinElmer[®]
 optoelectronics.