

## MS1015S Switching Mode Power Supply

### Special Features

- Small multi-purpose power supply
- Wide Input Range(AC85V~265V)
- Built-in EMI filter
- High efficiency
- Isolated output
- Short circuit protection
- Over voltage protection
- Thermal shutdown
- Low standby-power



### Electrical Characteristics

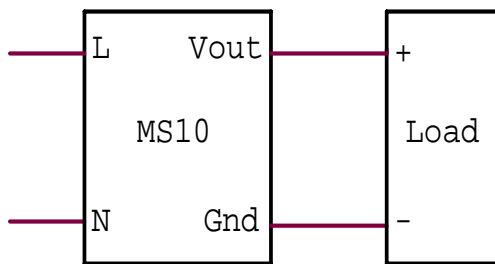
Characteristics		Condition	Min.	Typ.	Max.	Unit
AC Input	Voltage Range		85	220	265	V
	Current		-	-	0.24	A
DC Output	Voltage Range	$V_i=AC220V, I_o=600mA$	14.5	15.0	15.5	V
	Output Current		-	-	0.6	A
	Output Peak Current		-	-	0.9	Ap-p
	Line Regulation	$V_i=AC85\sim220V, I_o=600mA$	-	-	0.20	V
	Load Regulation	$V_i=AC220V, I_o=0\sim600mA$	-	-	0.20	V
	Ripple Voltage	$V_i=AC220V, I_o=600mA$	-	-	0.20	Vp-p
	Efficiency	$V_i=AC220V, I_o=600mA$	-	78	-	%
Power	No Load	$V_i=AC220V, I_o=0mA$	-	-	0.4	W
Consumption	Full Load	$V_i=AC220V, I_o=600mA$	-	-	12.3	W
Temperature	Operating Range		-10	-	60	°C
	Storage Range		-20	-	70	°C

### Package Outline

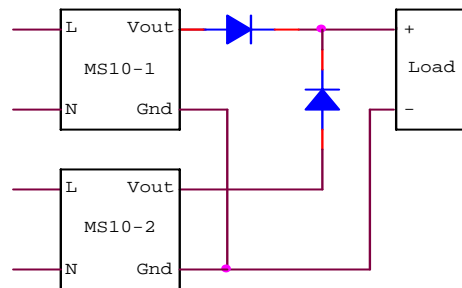
<p>※ Mount hole top view</p> <p>Notes 1. Weight : 55g or less 2. Dimension in mm</p>		Pin No.	Description
		L	AC Input(L)
		N	AC Input(N)
		-V	- DC Output
		+V	+ DC Output

## Application Circuit

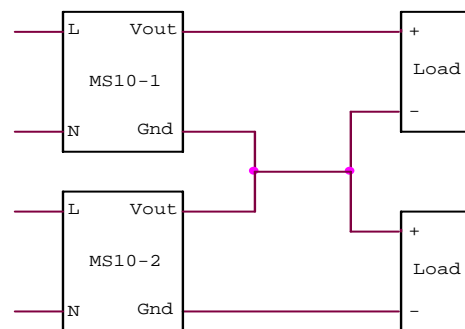
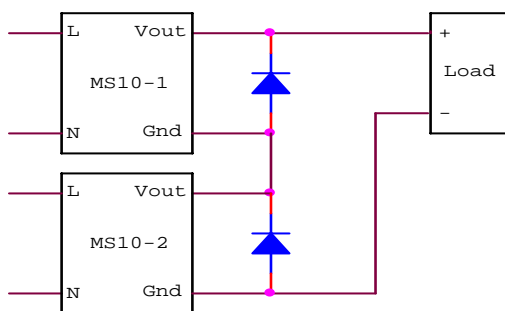
Basic connector



Parallel Operation



Series Operation



Diode : schottky or fast recovery

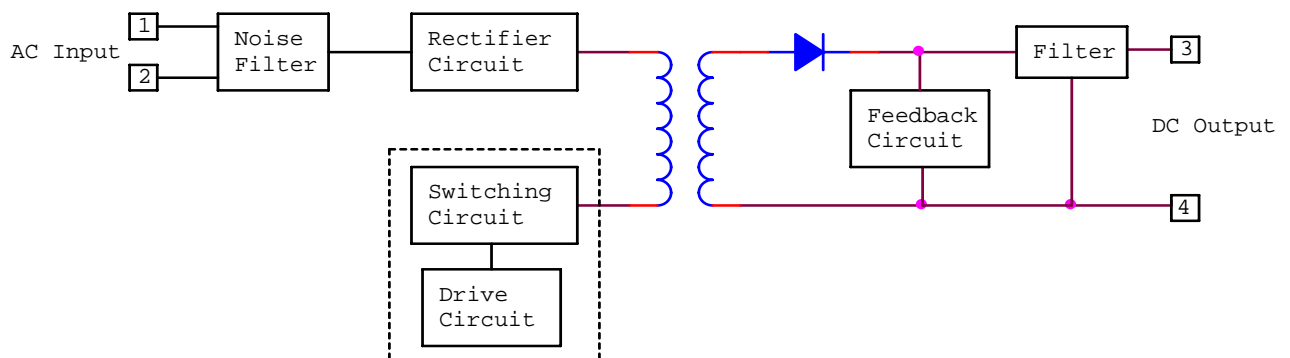
## Short circuit protection

By permanently monitoring the feedback line activity, the IC is able to detect the presence of a short-circuit, immediately reducing the output power for a total system protection. Once the short has disappeared, the controller resumes and goes back to normal operation.

## Thermal shutdown

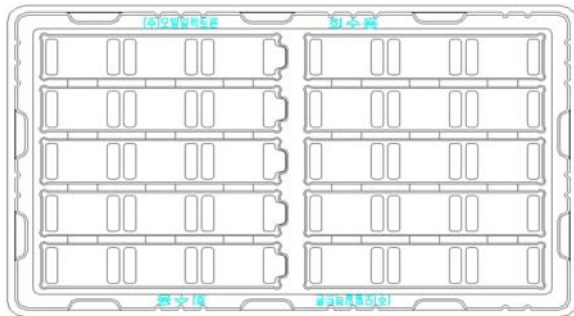
Temperature Shutdown 140°C

## Block Diagram



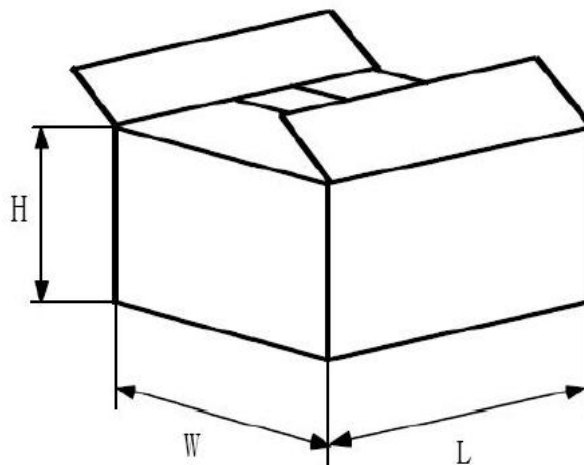
## Packing Specification

### 1. Inner Box



<b>Matter</b>	<b>PET</b>
<b>Size</b>	<b>380 X 230 X 21 X 0.8t</b>
<b>Quantity</b>	<b>30 pcs (6X5 )</b>

### 2. Output Box



	<b>Box1</b>	<b>Box2</b>
<b>L</b>	<b>390</b>	<b>390</b>
<b>W</b>	<b>240</b>	<b>380</b>
<b>H</b>	<b>220</b>	<b>180</b>
<b>Quantity</b>	<b>180</b>	<b>300</b>
<b>Marking</b>	<b>1. Maker</b> <b>2. Part Number</b> <b>3. Quantity</b>	

\* Unit : mm

**Mobilelectron Co., Ltd. 41-14, Palyong-Dong, Changwon-City, Kyungnam-Do,  
Republic of Korea, 641-465**

This semiconductor technical data is believed to be accurate and reliable, however Mobilelectron does not assume any responsibility arising out of the application or use of any product or circuit described herein; neither does it convey any license under its patent rights nor the rights of others.

Mobilelectron reserves the right at anytime without notice to change said circuitry and specifications.