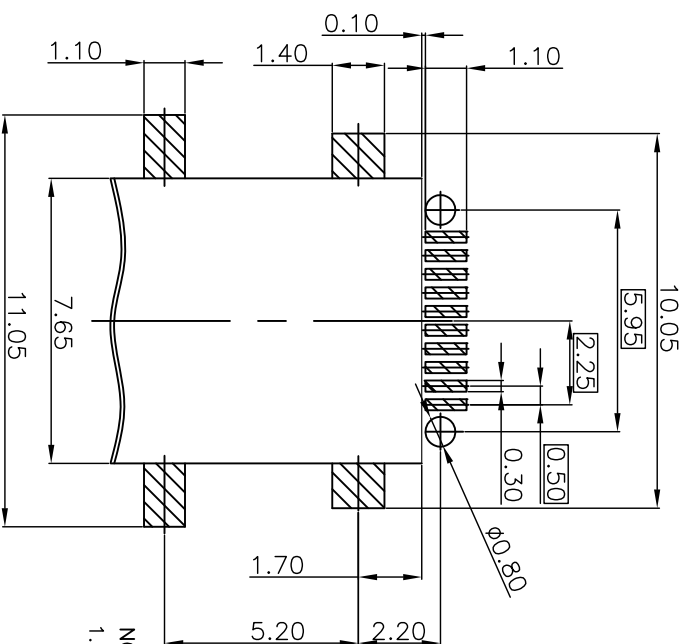
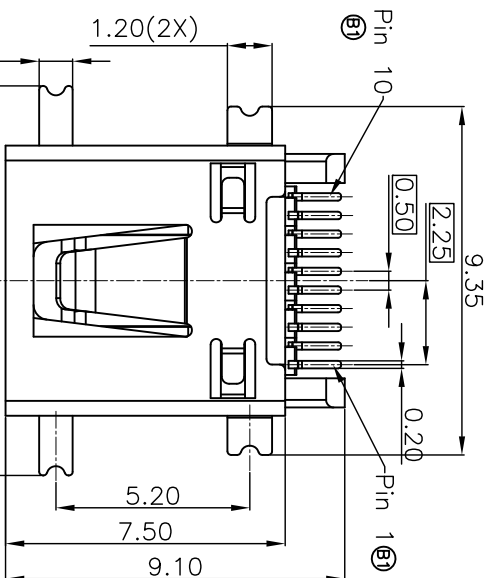
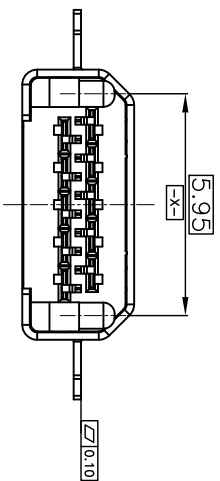
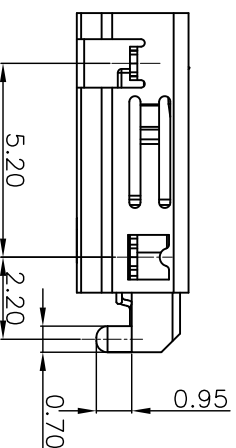
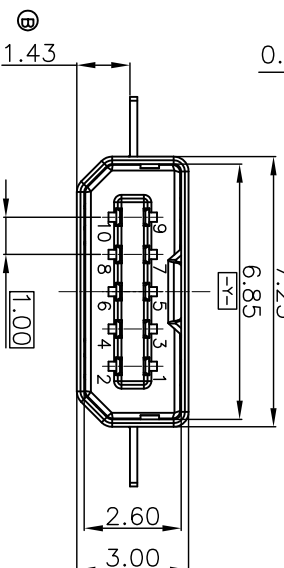


6		7		8	
REV	DATE	MODIFICATION		APPROVER	
A	2010/01/20	NEW		Jassem Jde	
B	2011/04/19	ADD DIMENSION 1.43 ⑥		Jassem Jde	
B1	2012/11/16	ADD PIN NO. ⑥		Jassem Jde	



RECOMMENDED P.C.B. LAYOUT  
TOLERANCE:±0.05



**NOTE:**

1. Mechanical performance:
  - 2.1 Insert and extract at the speed of 25mm/minute  
Pug insertion force:3.06kg MAX, extraction force:0.31kg MIN,
  - 2.2 Reliability: Insert and extract for 10000 times at the speed of 200 times/H
  - 2.3 Solderability: 240℃±5℃ for 3~5 seconds, solderability rate above 95%
2. Electrical performance and environment
  - 3.1 rating current:0.3A
  - 3.2 Insulation resistance: 100MΩ Min. at 500 V DC(After Testing)
  - 3.3 Terminal contact resistance: 100mΩ Max (After Testing)
  - 3.4 Withstanding voltage:500V(r.m.s.)AC at 1mA Max. for one minute
  - 3.5 Operating Temperature: -25℃~ +70℃


③	SHELL	STAINLESS STEEL	80u" Tin Min.
②	CONTACT	COPPER ALLOY	SEE PART NO.
①	HOUSING	HIGH TEMP. PLASTIC	BLACK UL94V-0
NO.	DESCRIPTION	MATERIAL	COLOR
			REMARK

PART NO.

U110S-A11A\*\*00\*00

### Terminal Materials & Plating—

Reserved Number  
— PACKAGE

GENERAL TOLERANCE										UNITS mm										NAME: MINI USB 10P SINKING-BOARD										TITLE: MINI USB 10P FEMALE SMT SINKING-BOARD TYPE														
SELECT					<input checked="" type="checkbox"/>					<input type="checkbox"/>					<input type="checkbox"/>					PART NO: U110S-A11A**00*00																								
DNI. TOL					1					2					3					FINISH					APPD:					DWG NO. ATOMPDWG0136														
X.XXX					±0.10±0.05±0.15																				CHKD: hyq 2011.09.30																			
X.XX					±0.15±0.13±0.25															Q'TY					DR: gaoon_duo 2011/04/19																			
X					±0.30±0.38 ±1.00																																							
ANGLE 42°																														SCALE					SHEET					REV				
																														1:1					1 OF 1					B				