

SPECIFICATION FOR APPROVAL

MESSRS : SUHKWANG

Description	Item
SMD INDUCTOR	SC7850D_Series

DATE : 2006. 03. 16.



株式
會社

光 星 電 子



HEAD OFFICE

KWANG SUNG ELECTRONICS CO.,LTD.

108, 4 - KA, WONHYO - RO, YONGSAN - KU, SEOUL, KOREA

TEL : 82 - 2 - 713 - 6001

FAX : 82 - 2 - 712 - 0001

82 - 2 - 711 - 2001

R&D CENTER

KWANG SUNG ELECTRONICS H/K CO.,LTD. KOREA BRANCH

201, WORLD VENTURE TOWN 60 - 24, GASAN - DONG

GEUMCHUN - GU, SEOUL, KOREA

TEL : 82 - 2 - 2108 - 3590, 3595

FAX : 82 - 2 - 2108 - 3535

HONG KONG OFFICE

KWANG SUNG ELECTRONICS H.K CO.,LTD.

UNIT7 - 9, 13/F, WAH WAI IND. CENTRE, 38 - 40

AU PUI WAN ST., FO TAN, N.T., HONG KONG

TEL : 852 - 2602 - 6609

FAX : 852 - 2602 - 6490

CHINA FACTORY

SHEN ZHEN KWANG SUNG ELECTRONICS CO.,LTD.

SHITOUZHAN INDUSTRIAL ZONE, ZHUAN CHANG

VILLAGE, SHIYAN TOWN BAOAN DISTRICT,

SHENZHEN GUANG DONG PROVINCE, CHINA

TEL : 86 - 755 - 2765 - 4650

FAX : 86 - 755 - 2765 - 6007

MESSRS.: SUHKWANG

SMD INDUCTOR

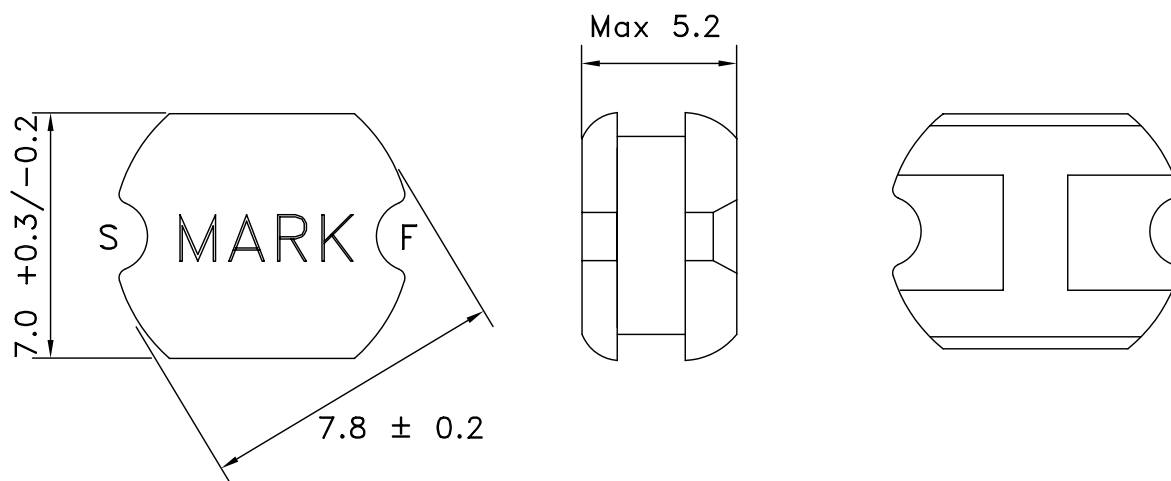
DATE: 2006. 03. 16.

TYPE: SC7850D Series

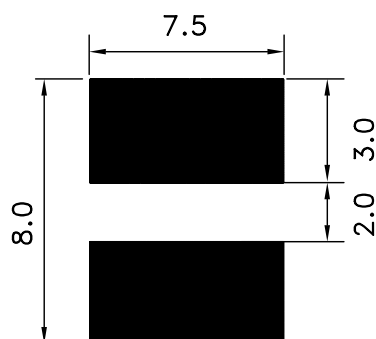
SPECIFICATION

1. ITEM : SMD CHOKE COIL (SC7850D Series)

2. DIMENSION (UNIT : mm)



(SOLDER LAND PATTERN)



3. ORDERING CODE

SC7850D - 220 K

Tolerance

Inductance (220 = 22uH)

Series Name

	DESCRIPTION	DRAWN	DESIGNED	CHECKED	APPROVED
				技術 06.03.16 權恩洙	技術 06.03.16 張東俊

KWANG SUNG ELECTRONICS CO., LTD.

MESSRS.: SUHKWANG	SMD INDUCTOR SPECIFICATION	DATE: 2006. 03. 16.
TYPE: SC7850D Series		

4. MATERIALS

NO	PARTS	MATERIAL
1	CORE	DR 7.8 x 5.0 or Equiv.
2	WIRE	POLYURETHANE ENAMELLED COPPER

5. ELECTRICAL CHARACTERISTICS

Part number.	Inductance L(μ H)	Tolerance (%)	DC.R(Ω) Max	Rated Current (A)
SC7850D-100K	10	$\pm 10\%$	0.07	2.3
SC7850D-120K	12	$\pm 10\%$	0.08	2.0
SC7850D-150K	15	$\pm 10\%$	0.09	1.8
SC7850D-180K	18	$\pm 10\%$	0.1	1.6
SC7850D-220K	22	$\pm 10\%$	0.11	1.5
SC7850D-270K	27	$\pm 10\%$	0.12	1.4
SC7850D-330K	33	$\pm 10\%$	0.13	1.3
SC7850D-390K	39	$\pm 10\%$	0.16	1.2
SC7850D-470K	47	$\pm 10\%$	0.18	1.1
SC7850D-560K	56	$\pm 10\%$	0.24	0.94
SC7850D-680K	68	$\pm 10\%$	0.28	0.85
SC7850D-820K	82	$\pm 10\%$	0.37	0.78
SC7850D-101K	100	$\pm 10\%$	0.43	0.72
SC7850D-121K	120	$\pm 10\%$	0.47	0.66
SC7850D-151K	150	$\pm 10\%$	0.64	0.58
SC7850D-181K	180	$\pm 10\%$	0.71	0.51
SC7850D-221K	220	$\pm 10\%$	0.96	0.49
SC7850D-271K	270	$\pm 10\%$	1.11	0.42
SC7850D-331K	330	$\pm 10\%$	1.26	0.4
SC7850D-391K	390	$\pm 10\%$	1.77	0.36
SC7850D-471K	470	$\pm 10\%$	1.96	0.34

* Measuring Freq. : 1 KHz

* Maximum rated DC current is that which causes a 20% inductance reduction or temperature rising $\Delta t=40^{\circ}\text{C}$ from the initial value.