

8

7

6

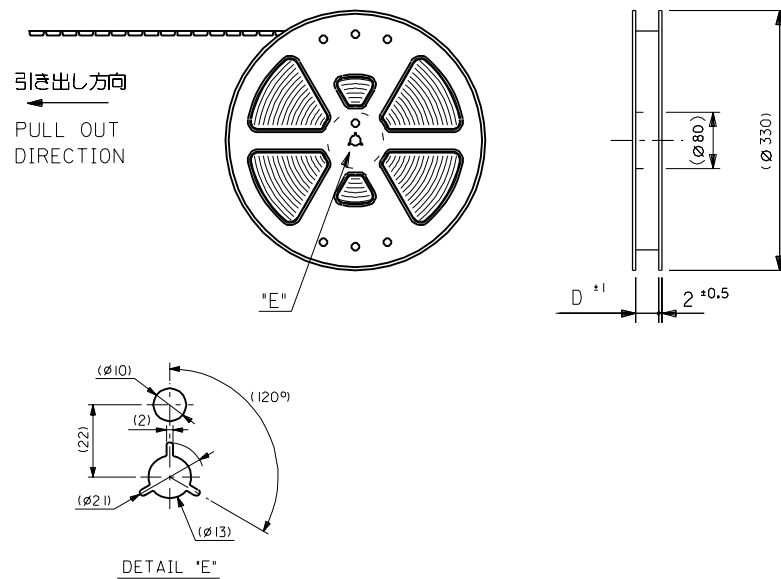
5

4

3

2

1

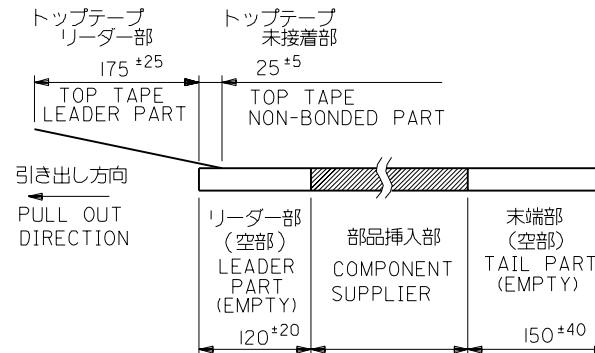


5. 材料 (MATERIAL)

キャリアテープ (CARRIER TAPE): ポリプロピレン (POLYPROPYLENE)
トップテープ (TOPTAPE): PET, PE, PEF
リール (REEL): ポリスチレン (PS) <リサイクル材を含む>
POLYSTYREN (PS) <RECYCLE MATERIAL CONTAINED>

注記 NOTES

- 製品番号 52435-**-27 の梱包状態はアクチュエータがロックした状態とする。
詳細寸法については図面 SD-52435-**-27 を参照下さい。
IN THE PACKAGE, ACTUATOR OF PART NO.52435-**-27 SHOULD BE LOCKED
RE DETAILED DIMENSIONS, SEE SD-52435-**-27
- 梱包数量: 1000個/リール
NUMBER OF CONNECTORS: 1000PCS/REEL
- リードテープ長さ LEAD TAPE LENGTH



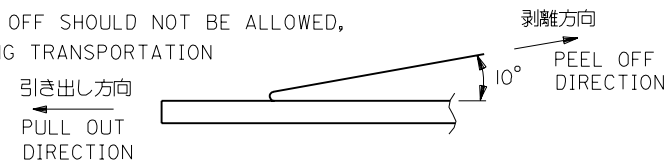
4. トップテープの剥離強度: (剥離方向は下図参照)

0.1N~0.7N (10.2gf~71.4gf) 尚、本規格値は、出荷時に適用。

(但し、輸送時に剥離が発生しない事。)

PEELING OFF FORCE OF TOP TAPE

0.1N~0.7N (10.2gf~71.4gf) (PEELING DIRECTION AS SHOWN IN FOLLOWING FIG.)
THIS REQUIREMENT SHOULD BE APPLIED AT SHIPMENT
PEEL OFF SHOULD NOT BE ALLOWED,
DURING TRANSPORTATION



F 変更 (J20010458)		材料 MATERIAL	注記参照 SEE NOTES	molex MOLEX-JAPAN CO.,LTD. 日本モレックス株式会社
E 変更 (J41005)		仕上げ FINISH	—	
D 変更 (J40900)		適用電線範囲 WIRE RANGE	—	REVISE ONLY ON CAD SYSTEM
C 変更 (J30060)		被覆外径 INS. RANGE	—	
B 変更 (J20834)		DRAWN BY '91/3/29 S.KAJINUMA	CHK'D BY '00/2/20 S.KUNISHI	TITLE 名称 0.5 FPC Conn ZIF SMT R/A With Tape Embstp Pkg
A 変更 (J20554)		APP'D BY '00/12/20 M.FUKUSHIMA	尺度 SCALE —	
O 新規作成 (J10236)		DATE		DWG. NO. (SHEET 1 OF 3)
一般公差 GENERAL TOLERANCES		記号 LTR	変更内容 REVISION RECORD	SD-52435-**-91
角度 ANGLE		3°		F
30°以上 OVER		+0.3		
10°以上 30°未満 OVER		+0.25		
10°未満 UNDER		+0.2		

DWG. NO.
SD-52435-**-91

E

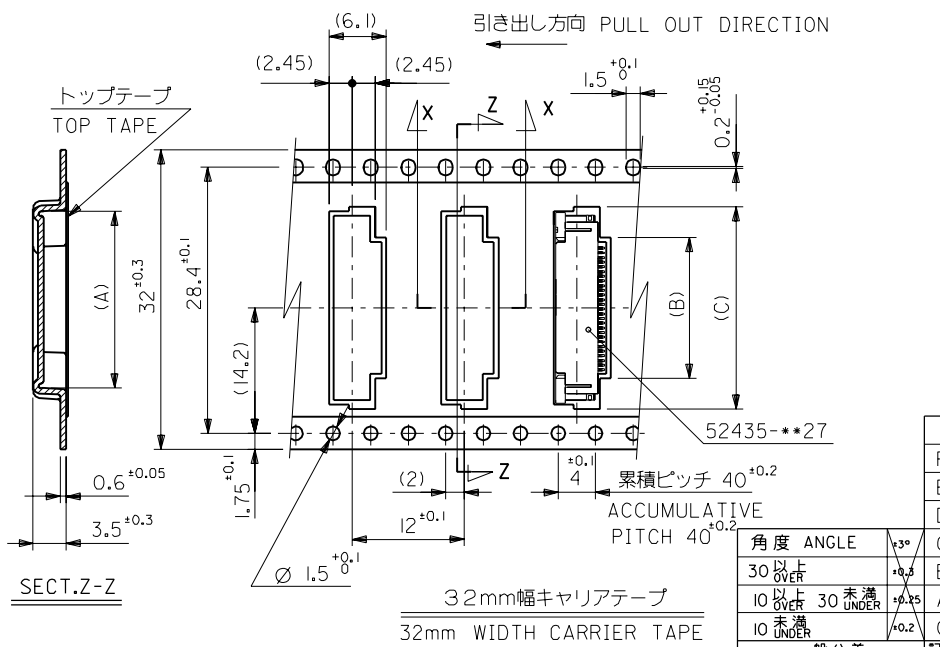
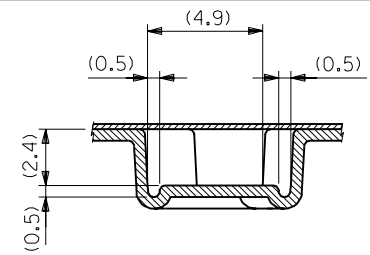
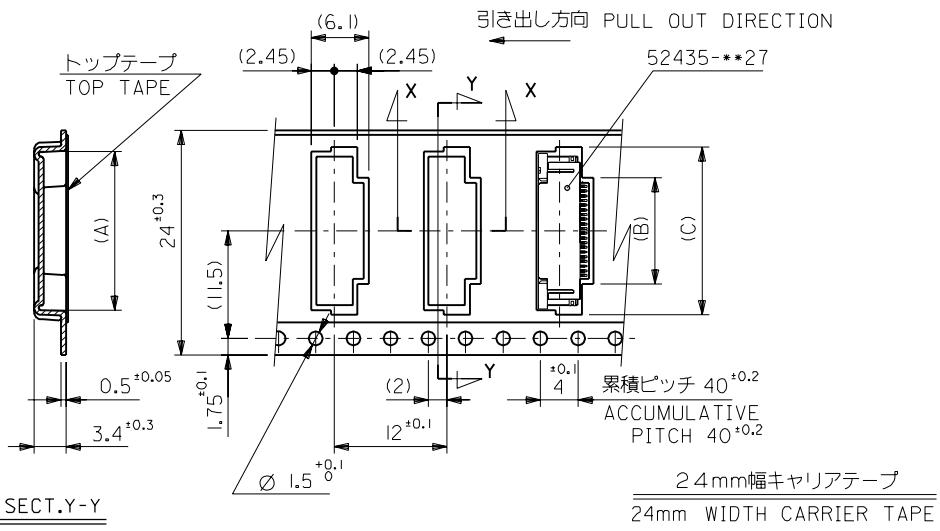
D

C

B

A

ALL DIMENSIONS IN METRIC DO NOT SCALE DRAWING



32	33.5	22.4	15.8	21.4	52435-2991	29	
		21.9	15.3	20.9	-2891	28	
		21.4	14.8	20.4	-2791	27	
		20.9	14.3	19.9	-2691	26	
		20.4	13.8	19.4	-2591	25	
		19.9	13.3	18.9	-2491	24	
		19.4	12.8	18.4	-2391	23	
		18.9	12.3	17.9	-2291	22	
24	25.5	17.9	11.3	16.9	-2091	20	
		17.4	10.8	16.4	-1991	19	
		16.9	10.3	15.9	-1891	18	
		16.4	9.8	15.4	-1791	17	
		15.9	9.3	14.9	-1691	16	
		15.4	8.8	14.4	-1591	15	
		14.9	8.3	13.9	-1491	14	
		14.4	7.8	13.4	-1391	13	
		13.9	7.3	12.9	-1291	12	
		13.4	6.8	12.4	-1191	11	
		12.9	6.3	11.9	-1091	10	
		12.4	5.8	11.4	-0991	9	
11.9	5.3	10.9	-0891	8			
11.4	4.8	10.4	-0791	7			
10.9	4.3	9.9	52435-0691	6			
キャリアテープ幅 CARRIER TAPE WIDTH		D	(C)	(B)	(A)	ENG. NO.	極致 CIRCUIT

F	変	更	UC2001-0458	100/12/15
E	変	更	(J41005)	94/12/13
D	変	更	(J40900)	94/11/11
C	変	更	(J30060)	93/11/25
B	変	更	(J20834)	92/9/14
A	変	更	(J20554)	92/7/16
O	新	規	作成 (J10236)	91/3/29
一般公差 GENERAL TOLERANCES		記号 LTR	変更内容 REVISION RECORD	DR. 日付 CHK. DATE
角度 ANGLE		3°		
30°以上 OVER		+0.5		
10°以下 30°未満 UNDER		+0.25		
10°未満 UNDER		+0.2		

材料 MATERIAL	SHEET 1 OF 3 参照 REFER TO SHEET 1 OF 3
仕上げ FINISH	—
適用電線範囲 WIRE RANGE	—
被覆外径 INS. RANGE	—
DRAWN BY 91/3/29 S.KAJINUMA	CHK'D BY 00/12/20 S.KUNISHI
APP'D BY 00/12/20 M.FUKUSHIMA	尺度 SCALE —
DWG. NO. (SHEET 2 OF 3) REV SD-52435-**-91 F	

Technical drawing of a 0.5 FPC connector (0.5 FPC CONN ZIF FOR SMT R/A (UPPER CONTAT)) showing dimensions and specifications.

Dimensions (mm):

- Overall length: 52.435
- Overall width: 14.5
- Pin pitch: 0.5
- Pin diameter: 0.3
- Pin length: 0.5
- Pin spacing: 0.5
- Pin height: 0.5
- Pin thickness: 0.3
- Pin width: 0.5
- Pin depth: 0.5
- Pin angle: 0.5
- Pin position: 0.5
- Pin tolerance: 0.5
- Pin material: 0.5
- Pin finish: 0.5
- Pin coating: 0.5
- Pin plating: 0.5
- Pin solder: 0.5
- Pin assembly: 0.5
- Pin inspection: 0.5
- Pin storage: 0.5
- Pin handling: 0.5
- Pin disposal: 0.5
- Pin recycling: 0.5
- Pin reuse: 0.5
- Pin repair: 0.5
- Pin replacement: 0.5
- Pin upgrade: 0.5
- Pin downgrade: 0.5
- Pin customization: 0.5
- Pin personalization: 0.5
- Pin branding: 0.5
- Pin marketing: 0.5
- Pin sales: 0.5
- Pin distribution: 0.5
- Pin logistics: 0.5
- Pin shipping: 0.5
- Pin delivery: 0.5
- Pin receipt: 0.5
- Pin inspection: 0.5
- Pin storage: 0.5
- Pin handling: 0.5
- Pin disposal: 0.5
- Pin recycling: 0.5
- Pin reuse: 0.5
- Pin repair: 0.5
- Pin replacement: 0.5
- Pin upgrade: 0.5
- Pin downgrade: 0.5
- Pin customization: 0.5
- Pin personalization: 0.5
- Pin branding: 0.5
- Pin marketing: 0.5
- Pin sales: 0.5
- Pin distribution: 0.5
- Pin logistics: 0.5
- Pin shipping: 0.5
- Pin delivery: 0.5
- Pin receipt: 0.5

Specifications:

- Model No. 52435-018
- Material No. 52435-018
- Design Units: Metric
- Third Angle Projection
- Scale: 1:1
- Dimension Style: MM ONLY
- General Tolerances: UNLESS SPECIFIED
- 10 UNDER 0.2
- 10 OVER 0.25
- 30 OVER 0.3
- Angular 0.3
- Draft Where Applicable Must Remain Within Dimensions
- See Chart SD-52435-018
- 0.5 FPC CONN ZIF FOR SMT R/A (UPPER CONTAT)
- MOLEX INCORPORATED
- Document No. SD-52435-018
- Sheet No. 2 OF 2
- Size A3
- En-02JA(021)

Notes:

- 適FPC推奨寸法 (APPLICABLE FPC RECOMMENDED DIMENSION)
- (仕上がり厚さ: 0.3 ± 0.05) (THICKNESS: 0.3 ± 0.05)
- 適FPC推奨寸法 (APPLICABLE FPC RECOMMENDED DIMENSION)
- (仕上がり厚さ: 0.3 ± 0.05) (THICKNESS: 0.3 ± 0.05)
- 参考板レイアウト (マウント面) (RECOMMENDED P.C. BOARD PATTERN DIMENSION (REF.) (MOUNTING SIDE))