

DWG. NO.
SD-54132-011

E

D

A

C

B

DO NOT SCALE DRAWING

EC NO. DRWN: CHK: APPR:	EC NO. DRWN: CHK: APPR:	EC NO. DRWN: CHK: APPR:	EC NO. DRWN: CHK: APPR:	RELEASED EC NO. JC200 I-0171 DRWN: K.KOHAMA 00/09/0 CHK: S.KUNISHI 00/09/0 APPR: M.FUKUSHIMA 00/09/0
REV	DESCRIPTION	MATERIAL 材料	FINISH 仕上り	
		WIRE RANGE 適用電線範囲		
		INS. RANGE 被覆外径		

SHEET 2 OF 2 参照 SEE SHEET 2 OF 2	
WIRE RANGE 適用電線範囲	//
INS. RANGE 被覆外径	//

GENERAL TOLERANCES: (UNLESS SPECIFIED) 一般公差	
10 UNDER 未満	+0.2
10 OVER 以上	+0.25
30 UNDER 未満	+0.25
30 OVER 以上	+0.3
ANGLE 角度	+3°

SCALE —mm —INCH	DESIGN UNITS <input checked="" type="checkbox"/> mm <input type="checkbox"/> INCH	THIRD ANGLE PROJECTION	DIMENSIONS: <input type="checkbox"/> mm <input type="checkbox"/> INCH <input checked="" type="checkbox"/> mm ONLY	SHT REV
DRAWN BY & DATE K.KOHAMA 00/09/13	CHECKED BY & DATE S.KUNISHI 00/09/13	APPROVED BY & DATE M.FUKUSHIMA 00/09/13	CAD FILENAME 54132011.S01	MATERIAL NO. 54132-**31
TITLE: 0.5 FPC CONN. ZIF HOUSING ASS'Y FOR SMT. (R/A) BOTTOM CONTACT		MOLEX INCORPORATED		
DRAWING NO. SD-54132-011		SHEET NO. 1 OF 2		SIZE B

8

7

6

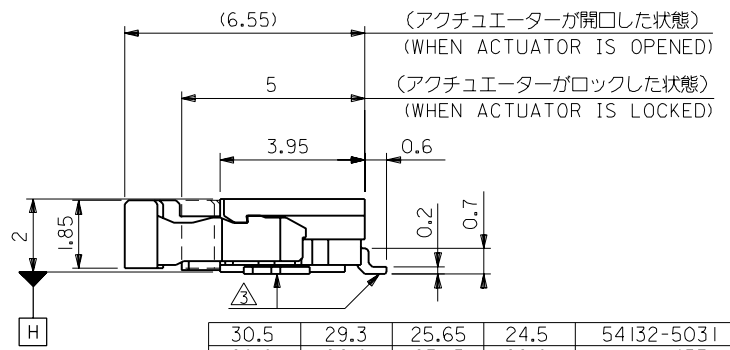
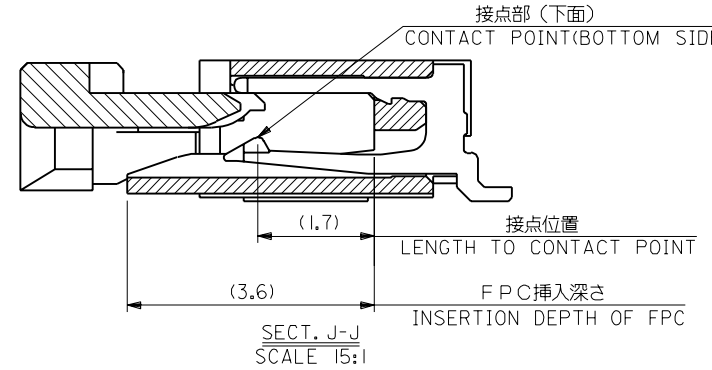
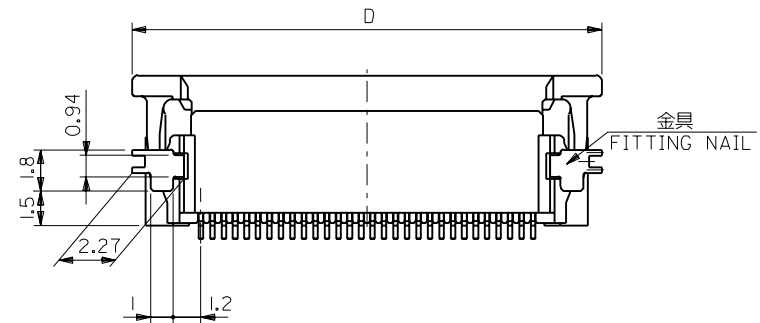
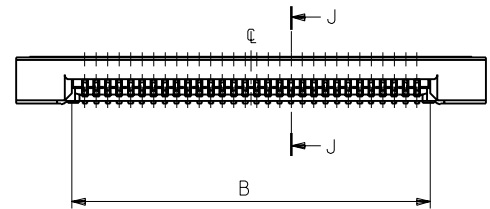
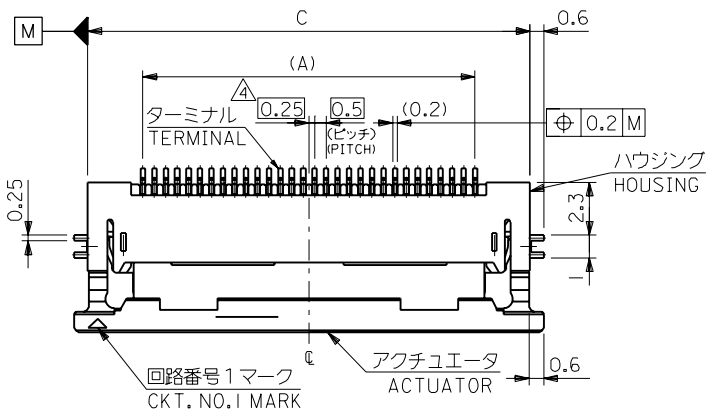
5

4

3

2

EN-02J(097) MXJ-54



30.5	29.3	25.65	24.5	54132-5031	50
28.0	26.8	23.15	22.0	-4531	45
27.0	25.8	22.15	21.0	-4331	43
25.5	24.3	20.65	19.5	-4031	40
24.5	23.3	19.65	18.5	-3831	38
23.5	22.3	18.65	17.5	-3631	36
23.0	21.8	18.15	17.0	-3531	35
22.5	21.3	17.65	16.5	-3431	34
22.0	20.8	17.15	16.0	-3331	33
21.5	20.3	16.65	15.5	-3231	32
20.5	19.3	15.65	14.5	54132-3031	30
D	C	B	A	ENG. NO.	CKT.

DWG. NO.
SD-54132-011

E

D

▽

C

B

DO NOT SCALE DRAWING

8

7

6

5

4

3

2

1

F

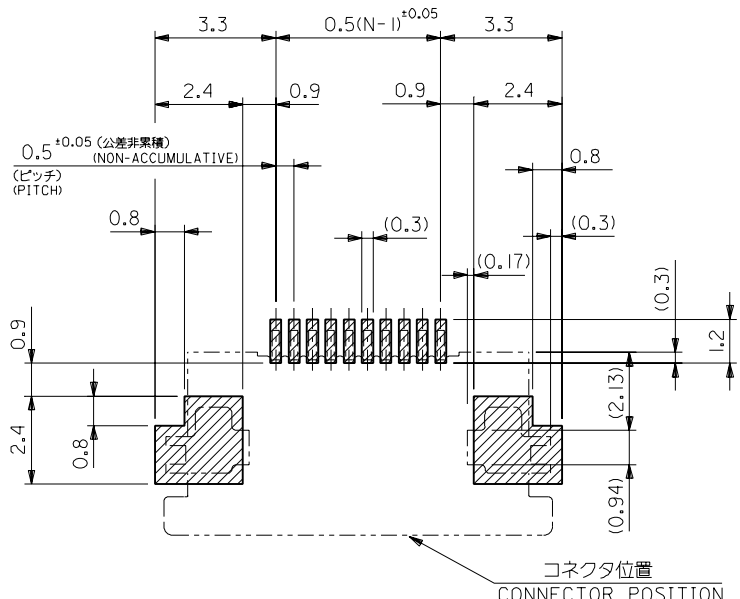
E

D

C

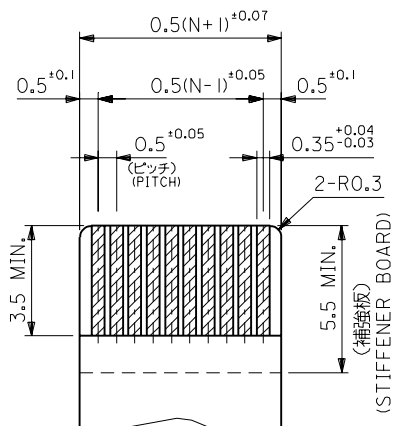
B

A

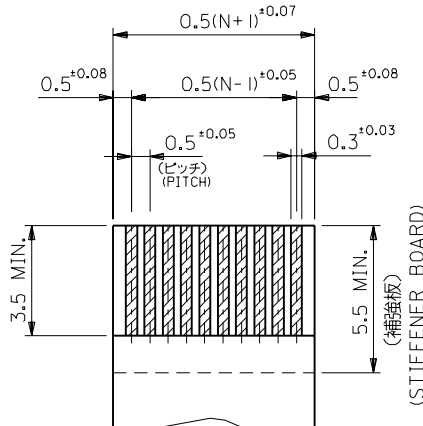


コネクタ位置
CONNECTOR POSITION

参考基板レイアウト
RECOMMENDED PC BOARD PATTERN DIMENSION(REF.)
(マウント面)
(MOUNTING SIDE)



適合FPC推奨寸法
APPLICABLE FPC RECOMMENDED DIMENSION
(仕上がり厚さ: 0.3±0.03)
(THICKNESS: 0.3±0.03)



適合FFC推奨寸法
APPLICABLE FFC RECOMMENDED DIMENSION
(仕上がり厚さ: 0.3±0.03)
(THICKNESS: 0.3±0.03)


注記
NOTES

1. 使用材料
MATERIAL
ハウジング : 46ナイロン, UL94V-0
HOUSING : 46NYLON
アクチュエーター : PPS, UL94V-0
ACTUATOR : PPS
ターミナル : リン青銅, 錫メッキ (t=0.2)
TERMINAL : PHOS-BRO, TIN-PLATED
金具 : リン青銅, 錫メッキ (t=0.2)
FITTING NAIL : PHOS-BRO, TIN-PLATED

2. インボステープ梱包時は、アクチュエーターがロックした状態とする。
IN THE PACKAGE, ACTUATOR OF PART NO.54132-***1 SHOULD BE LOCKED.
△ ソルダータール半田付け面のズレ量、及び金具半田付け面のズレ量は、基準面 H に対し上方向0.1MAX、下方向0.15MAX、とする。
MISALIGNMENT OF SOLDER TAILS AND FITTING NAIL FROM H UPPER DIRECTION: 0.1 MAX., LOWER DIRECTION: 0.15 MAX.
△ 偶数極に適用
APPLY FOR EVEN CIRCUIT.
△ パターンはくり止め用金具
FITTING NAIL FOR PREVENTION OF PEELING OF P.C.B. PATTERN.

FPC/FFCについて

打抜き方向は導体側から補強板側を推奨いたします。
導体部については軟銅箔35マイクロメートルまたは50マイクロメートルメッキ厚 3〜9マイクロメートル錫または半田メッキ (電気メッキ)
RECOMMENDED PUNCHER DIRECTION:
FROM CONDUCTOR SIDE TO STIFFENER BOARD SIDE.
RECOMMENDED CONDUCTOR SPEC.:
THICKNESS OF SOFT COPPER FOIL:
35 micrometer or 50 micrometer
TIN OR SOLDER PLATING:
3~9 micrometer (ELECTRICAL PLATING)

EC NO. DRWN: CHK: APPR:			EC NO. DRWN: CHK: APPR:			EC NO. DRWN: CHK: APPR:			EC NO. DRWN: CHK: APPR:			RELEASED EC NO. JC2001-0171 DRWN: K.KOHAMA '00/09/08 CHK: S.KUNISHI '00/09/08 APPR: M.FUKUSHIMA '00/09/08	DESCRIPTION	MATERIAL 材料		GENERAL TOLERANCES: (UNLESS SPECIFIED) 一般公差		SCALE --	DESIGN UNITS mm INCH	 THIRD ANGLE PROJECTION	<input type="checkbox"/> INCH <input type="checkbox"/> mm ONLY		REVISE ON CAD ONLY
														注記参照 SEE NOTES		10 UNDER 未満	±0.2	DRAWN BY & DATE K.KOHAMA '00/09/13			TITLE: 0.5 FPC CONN. ZIF HOUSING ASS'Y FOR SMT. (R/A) BOTTOM CONTACT		
														FINISH 仕上げ		10 OVER 以上	30 UNDER 未満	±0.25	CHECKED BY & DATE S.KUNISHI '00/09/13				
														WIRE RANGE 適用電線範囲		30 OVER 以上	±0.3	APPROVED BY & DATE M.FUKUSHIMA '00/09/13		MOLEX MOLEX INCORPORATED			
														INS. RANGE 被覆外径		ANGLE 角度	±3°	CAD FILENAME 54132011.S02		MATERIAL NO. 54132-**31	DRAWING NO. SD-54132-011	SHEET NO. 2 OF 2	
																THIS DRAWING CONTAINS INFORMATION THAT IS PROPRIETARY TO MOLEX INCORPORATED AND SHOULD NOT BE USED WITHOUT WRITTEN PERMISSION.						SIZE B	

注記参照
SEE NOTES

0.5 FPC CONN. ZIF
HOUSING ASS'Y FOR SMT.
(R/A) BOTTOM CONTACT

MOLEX INCORPORATED

54132-***31 SD-54132-011

EN-02J(097) MXJ-54

DO NOT SCALE DRAWING

8

7

6

5

4

3

2

1

1

E

D

C

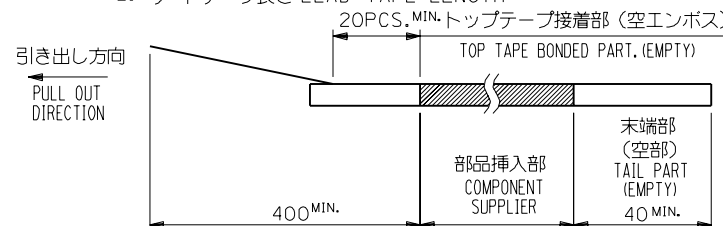
B

A

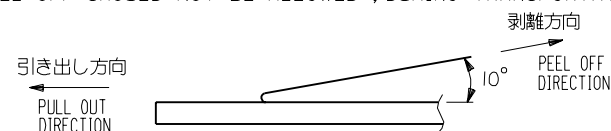
4132012.S01

NOTES

1. 梱包数量: 1500個/リール
NUMBER OF CONNECTORS : 1500PCS/REEL



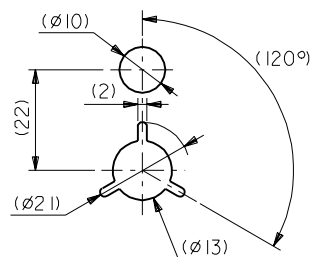
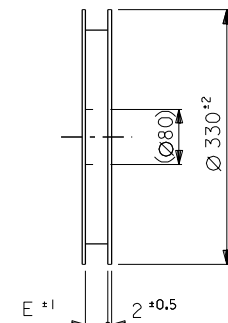
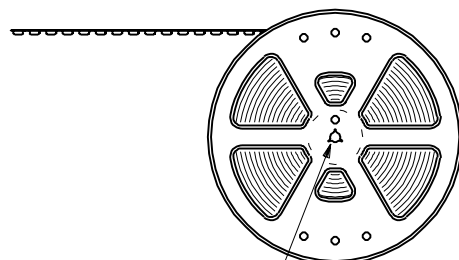
3. トップテープの剥離強度：0.1N(10.2gf ～ 71.4gf)
(剥離方向は下図参照)
尚、本規格値は出荷時に適用。(但し、輸送時に剥離が発生しないこと。)
PEELING OFF FORCE OF TOP TAPE : 0.1N ～ 0.7N(10.2gf ～ 71.4gf)
(PEELING DIRECTION AS SHOWN IN FOLLOWING FIG.)
THIS REQUIREMENT SHOULD BE APPLIED AT SHIPMENT.
PEEL OFF SHOULD NOT BE ALLOWED . DURING TRANSPORTATION.





5. 材料 キャリアテープ：ポリプロピレン（PP）
 トップテープ：PET、PE、PEF
 リール：ポリスチレン（PS）＜リサイクル材を含む＞

MATERIAL CARRIER TAPE:POLYPROPYLENE
TOP TAPE:PET,PE,PEF
REEL:POLYSTYREN(PS)
<RECYCLE MATERIAL CONTAINED>

引き出し方向
PULL OUT
DIRECTION



DETAIL "F"

EC NO. DRAWN: CHK: APPR:			EC NO. DRAWN: CHK: APPR:			EC NO. DRAWN: CHK: APPR:			REVISED EC NO. JC2001-0487 DRAWN: K.KOHAMA '00/02 CHK: S.KUNISHI '00/02 APPR: M.FUKUSHIMA '00/02			RELEASED EC NO. JC2001-0171 DRAWN: K.KOHAMA '00/03 CHK: S.KUNISHI '00/03 APPR: M.FUKUSHIMA '00/03			MATERIAL 材料			GENERAL TOLERANCES: (UNLESS SPECIFIED) 一般公差			SCALE 2:1			DESIGN UNITS <input checked="" type="checkbox"/> mm <input type="checkbox"/> INCH			 THIRD ANGLE PROJECTION			DIMENSIONS: <input type="checkbox"/> mm <input type="checkbox"/> INCH <input checked="" type="checkbox"/> mm ONLY			SHT REV							
															FINISH 仕上り			10 UNDER 未満			+0.2			DRAWN BY & DATE K.KOHAMA '00/09/13			TITLE: EMBOSSD TAPE PACKAGE FOR 0.5 FPC CONN. ZIF			 MOLEX INCORPORATED			MATERIAL NO. 54132-**-92			DRAWING NO. SD-54132-012			SHEET NO. 1 OF 2	
															30 OVER 以上			+0.25			CHECKED BY & DATE S.KUNISHI '00/12/22																			
															30 OVER 以上			+0.3			APPROVED BY & DATE M.FUKUSHIMA '00/12/22																			
															WIRE RANGE 適用導線範囲			ANGLE 角度			+3°			CAD FILENAME 54132012.S01												THIS DRAWING CONTAINS INFORMATION THAT IS PROPRIETARY TO MOLEX INCORPORATED AND SHOULD NOT BE USED WITHOUT WRITTEN PERMISSION.		SIZE B		

DWG. NO.
SD-54132-012

E

D

C

B

DO NOT SCALE DRAWING

EC NO.
DRWN:
CHK:
APPR:

EC NO.
DRWN:
CHK:
APPR:

EC NO.
DRWN:
CHK:
APPR:

REVISED

EC NO. JC2001-0487
DRWN: K.KOHAMA '00/02/02
CHK: S.KUNISHI '00/02/02
APPR: M.FUKUSHIMA '00/02/02

RELEASED

EC NO. JC2001-0171
DRWN: K.KOHAMA '00/09/03
CHK: S.KUNISHI '00/09/03
APPR: M.FUKUSHIMA '00/09/03

DESCRIPTION

MATERIAL
材料

SHEET 1 OF 2 参照
REFER TO SHEET 1 OF 2

FINISH
仕上げ

WIRE RANGE
適用電線範囲

INS. RANGE
被覆外径

REV

GENERAL TOLERANCES:
(UNLESS SPECIFIED)
一般公差

10 UNDER
未満 +0.2
10 OVER
以上 30 UNDER
未満 +0.25
30 OVER
以上 +0.3

ANGLE 角度 +3°

SCALE
2:1

DESIGN UNITS
mm INCH

THIRD ANGLE
PROJECTION

DIMENSIONS:
mm INCH mm ONLY

SHT
REV

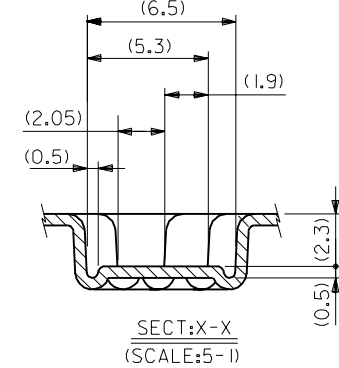
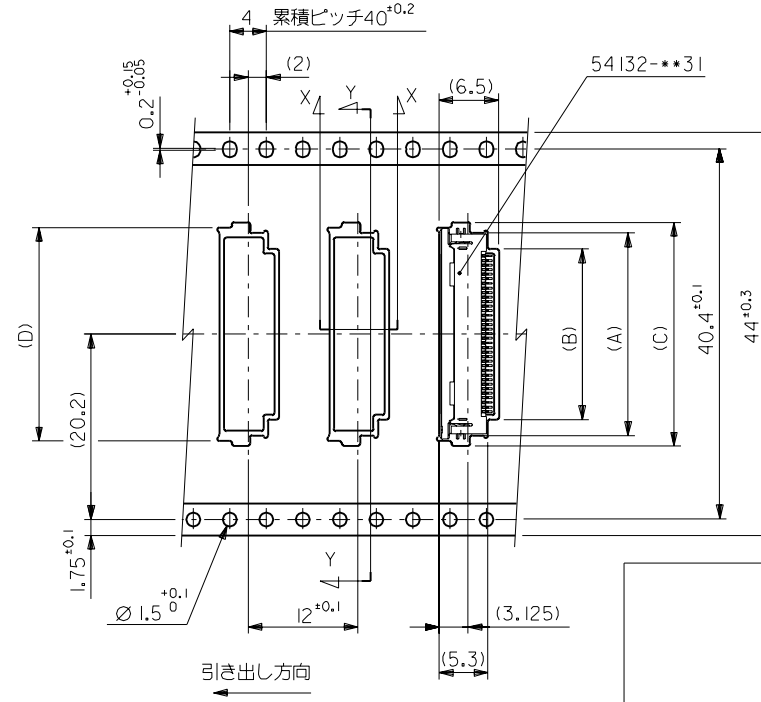
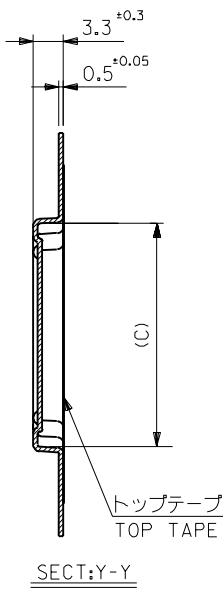
DRAWN BY & DATE
K.KOHAMA '00/09/13
CHECKED BY & DATE
S.KUNISHI '00/12/22
APPROVED BY & DATE
M.FUKUSHIMA '00/12/22
CAD FILENAME
54132012.S02

TITLE:
EMBOSSD TAPE PACKAGE
FOR 0.5 FPC CONN. ZIF
MOLEX INCORPORATED
MATERIAL NO.
54132-***92
DRAWING NO.
SD-54132-012
SHEET NO.
2 OF 2

THIS DRAWING CONTAINS INFORMATION THAT IS PROPRIETARY TO MOLEX
INCORPORATED AND SHOULD NOT BE USED WITHOUT WRITTEN PERMISSION.

SIZE
B

EN-02J(097) MXJ-54



44	45.5	30.8	31.6	26.1	29.6	54132-5092	50
		28.3	29.4	23.6	27.1	-4592	45
		27.3	28.4	22.6	26.1	-4392	43
		25.8	26.9	21.1	24.6	-4092	40
		24.8	25.9	20.1	23.6	-3892	38
		23.8	24.9	19.1	22.6	-3692	36
		23.3	24.4	18.6	22.1	-3592	35
		22.8	23.9	18.1	21.6	-3492	34
		22.3	23.4	17.6	21.1	-3392	33
		21.8	22.9	17.1	20.6	-3292	32
キャリアテープ幅 CARRIER TAPE WIDTH	E	D	C	B	A	ENG. NO.	CKT.

54132012.S02