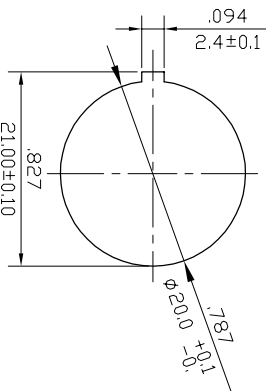
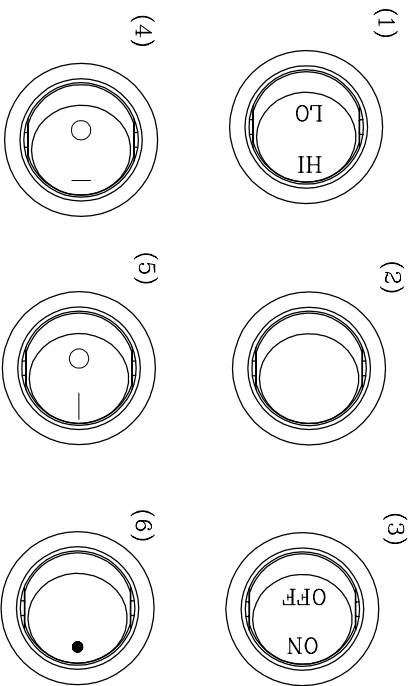
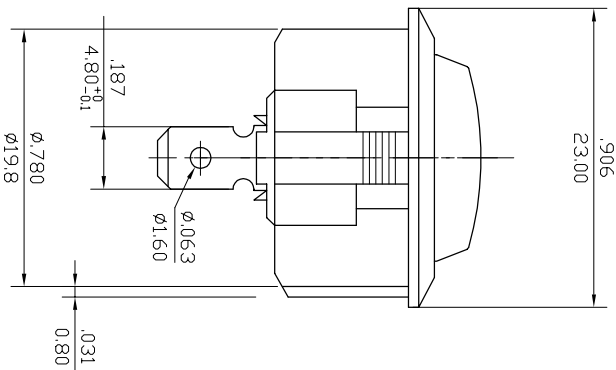
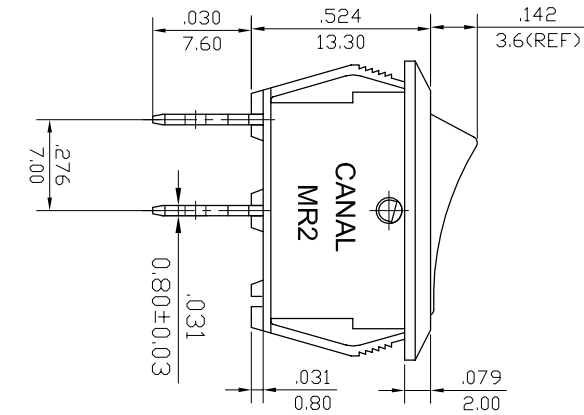


ROCKER SWITCH MODEL MR-2 SERIES  
RATING:20A 125VAC, 12A 250VAC (UL/CUL)  
16(8)A 250V~T85 (ENEC,VDE,CQC)  
DIELECTRIC VOLTAGE-WITHSTAND:1,000VAC FOR 1 MINUTE  
INSULATION RESISTANCE:DC 500V 100MΩ(MIN.)  
CONTACT RESISTANCE:20mΩINITIAL (MAX.)



NOTE:1.TOLERANCES UNLESS OTHERWISE SPECIFIED:  $\pm 0.12$  (in/mm)  
 $0.3$

PANEL CUTOUT DIMENSION TABLE

REVISION	DESCRIPTION	REVISED BY	TOLERANCES X.X:		ANGLE $1^{\circ}$	UNIT	PART NAME	MR-2 SPEC DRAWING	DWG NO
△			DRAWN BY	向宏	DESIGNED BY	戴德建	SCALE	1/1	S3300A
△			CHECKED BY		APPROVED BY		DATE	2009.12.21	
△							PART NO	MR-2-110-R-**-6N°C	
△	2009.12.21	首次出圖		向宏					