

Topstek Current Transducer TQPV50A .. TQPV350A

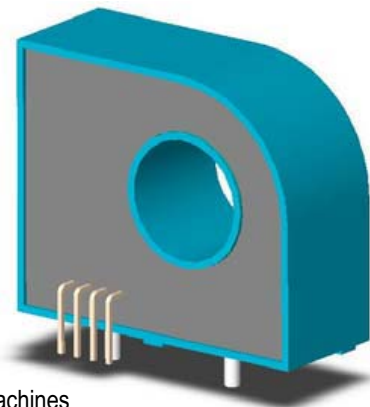
TQPV50A ~350A

Features

- ◆ Highly reliable Closed Loop Hall Effect device
- ◆ Open Loop CT voltage output format: 4V out at nominal input
- ◆ Compact and light weight
- ◆ Fast response time
- ◆ Excellent linearity of the output voltage over a wide input range
- ◆ Excellent frequency response (> 125 kHz)
- ◆ Low power consumption at quiescent state (10 mA nominal)
- ◆ Capable of measuring both DC and AC, both pulsed and mixed
- ◆ High isolation voltage between the measuring circuit and the current-carrying conductor (AC2.5KV)
- ◆ Extended operating temperature range
- ◆ Flame-Retardant plastic case and silicone encapsulated, using UL classified materials, ensures protection against environmental contaminants and vibration over a wide temperature and humidity range

Applications

- ◆ UPS systems
- ◆ Industrial robots
- ◆ NC tooling machines
- ◆ Elevator controllers
- ◆ Process control devices
- ◆ AC and DC servo systems
- ◆ Motor speed controller
- ◆ Electrical vehicle controllers
- ◆ Inverter-controlled welding machines
- ◆ General and special purpose inverters
- ◆ Power supply for laser processing machines
- ◆ Controller for traction equipment eg. electric trains
- ◆ Other automatic control systems



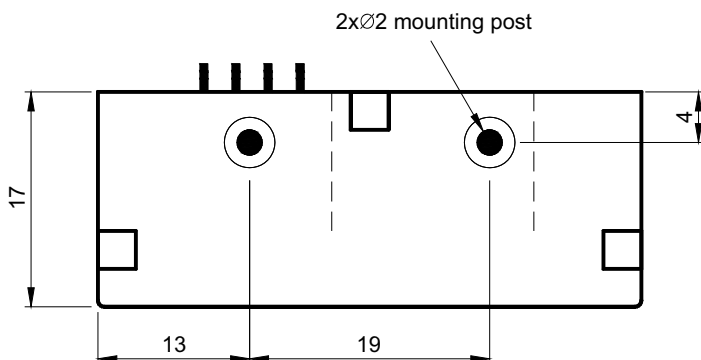
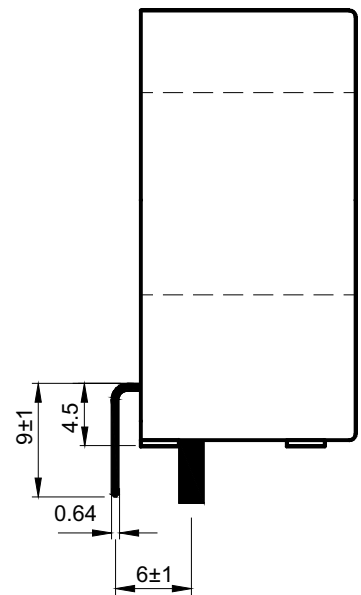
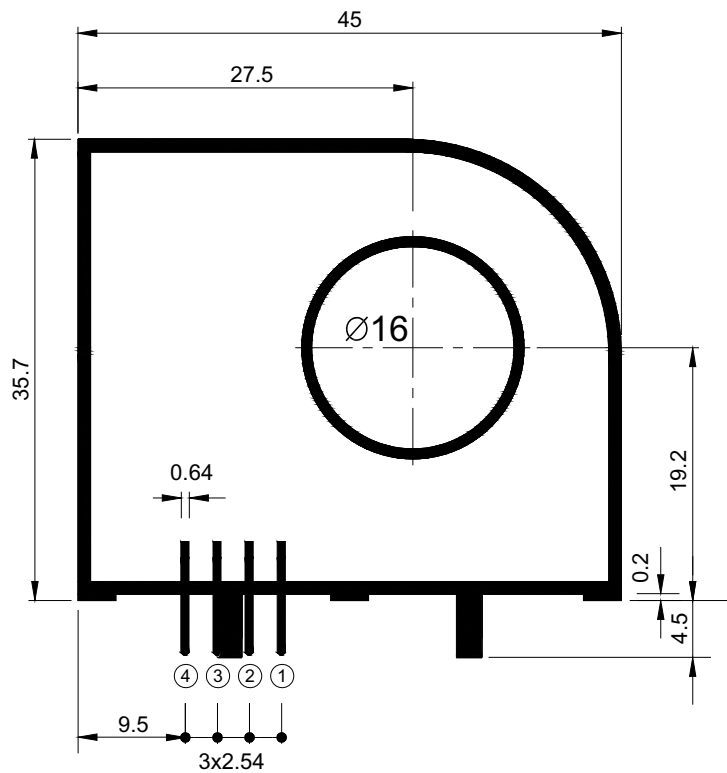
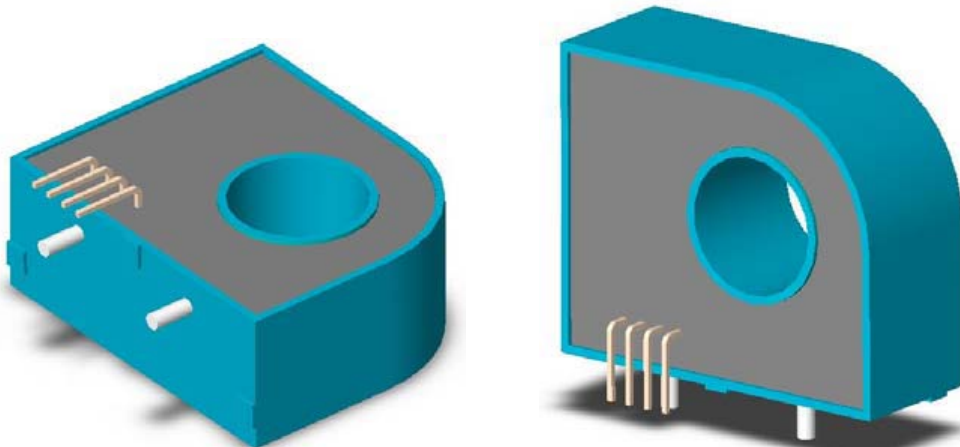
Specifications

Parameter	Symbol	Unit	TQPV 50A	TQPV 75A	TQPV 100A	TQPV 125A	TQPV 150A	TQPV 200A	TQPV 250A	TQPV 300A	TQPV 350A
Nominal Input Current	I_{fn}	A DC	±50	±75	±100	±125	±150	±200	±250	±300	±350
Linear Range	I_{fs}	A DC	±150	±225	±300	±375	±450	±600	±750	±750	±750
Secondary Coil Current	I_s	A	$I_f / 1500$			$I_f / 2500$			$I_f / 3200$		
Consumption Current@ $I_f = I_{fn}$	I_{CC}	mA	47	63	80	63	73	75	91	106	120
Nominal Output Voltage	V_{hn}	V	±4 V ±1% at $I_f = I_{fn}$ ($R_L = 10k\Omega$), $T_a = 25^\circ C$								
Supply Voltage	V_{CC}/V_{EE}	V	±15V ±5%								
Offset Voltage	V_{os}	mV	Within ±40 mV @ $I_f = 0$, $T_a = 25^\circ C$								
Output Resistance	R_{OUT}	Ω	<100 Ω (50 Ω nominal)								
Hysteresis Error	V_{oh}	mV	Within ±25 mV @ $I_f = I_{fn} \rightarrow 0$								
Linearity	ρ	%	Within ±0.2% of I_{fn}								
Response Time (90% V_{hn})	T_r	μsec	3 μsec max. @ $d I_f / dt = I_{pn} / \mu sec$								
Frequency Bandwidth (-3dB)	f_{BW}	Hz	DC to 125kHz								
Thermal Drift of Output	-	%/°C	Within ±0.02 %/°C @ I_{fn}								
Thermal Drift of Zero Current Offset	-	mV/°C	Within ±1.5 mV/°C @ I_{fn}								
Dielectric Strength	-	V	AC2.5KV X 60 sec								
Isolation Resistance @ 1000 VDC	R_{Is}	M Ω	>1000 M Ω								
Operating Temperature	T_a	°C	-40°C to 80°C								
Storage Temperature	T_s	°C	-40°C to 85°C								
Mass	W	g	<40 g								

TopsTek Current Transducer TQPV50A .. TQPV350A

Appearance, dimensions and pin identification

All dimensions in mm ± 0.2 , holes $-0, +0.2$ except otherwise noted.



Pin Assignment	
①	+15V
②	-15V
③	V _{OUT}
④	0V



Additional Information :

한국 대리점 : (주)디웰전자 (Diwell Electronics Co., Ltd.)

경기도 군포시 당정동 358 군포창업보육센터 202호

202, Kunpo Business Incubator Center, 358,

Dangjung-Dong, Gunpo-City, Gyeonggi-Do, South Korea

Phone : 070-8235-0820 (+82-70-8235-0820)

Fax : 031-429-0821 (+82-31-429-0821)

기술 및 구매 문의 email : expoeb2@diwell.com,

dsjeong@diwell.com