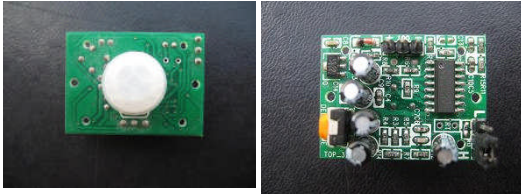




EAGLE POWER International Holdings (HK) LTD

PIR Motion Detector Module



Motion detector module uses a motion detector IC and PCB mounted Fresnel lens.

Item: SB0071

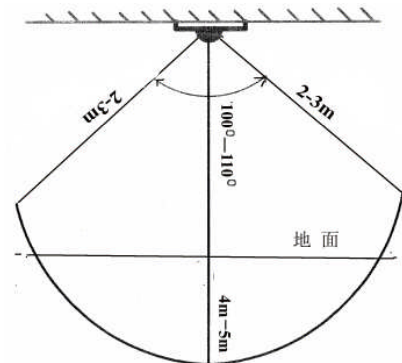
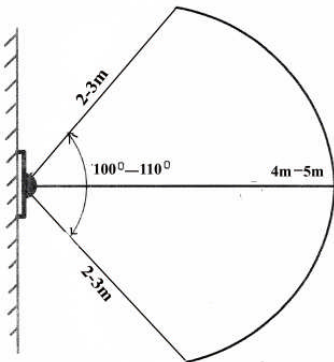
General

SB0071 is a pyroelectric sensor module which developed for human body detection. A PIR detector combined with a fresnel lens are mounted on a compact size PCB together with an analog IC, SB0071, and limited components to form the module. High level output of variable width is provided.

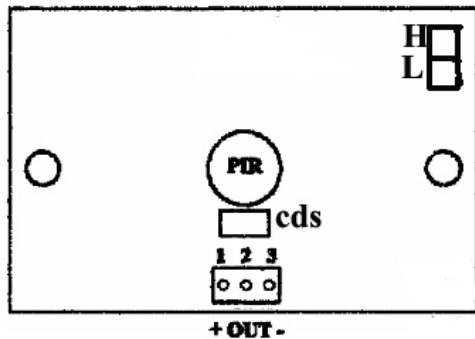
Features and Electrical Specification

Compact size (24 x 32 mm)
Supply current: DC5V-20V(can design DC3V-24V)
Current drain :< 50uA
Voltage Output: High/Low level signal : 3.3V
(Other choice: Open-Collector Output)
TTL output
High sensitivity
Delay time: 5s-18 minute(as customer requirement)
Operation Temperature: -15°C -70 °C
Infrared sensor: dual element, low noise, high sensitivity
Light sensor: CdS photocell (can be add as customer requirement)

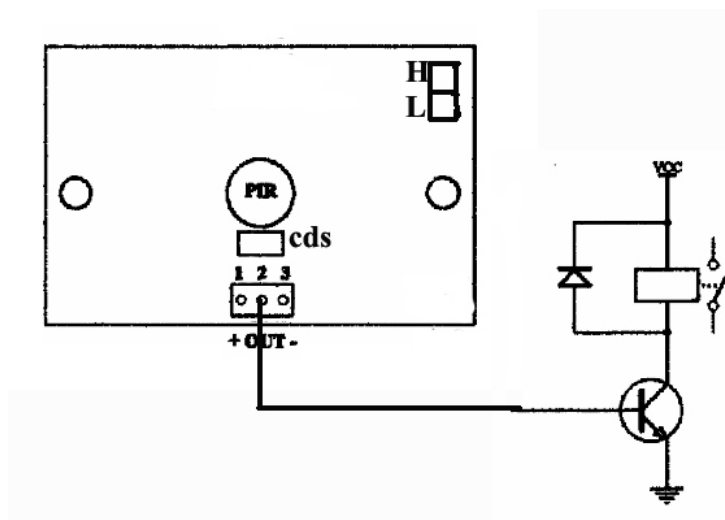
Lens information



Application Note



1. Power anode
 2. Output: High level signal
 3. Power cathode
- H: Can be spring repeatedly
L: Can not be spring repeatedly
CDS: Photocell



Note

Due to the high sensitivity of PIR sensor device, it is not recommended to use the module in the following or similar condition.

- A) in rapid environmental changes
- B) in strong shock or vibration
- C) in a place where there are obstructing material (eg. glass) through which IR cannot pass within detection area.
- D) exposed to direct sun light
- E) exposed to direct wind from a heater or air condition