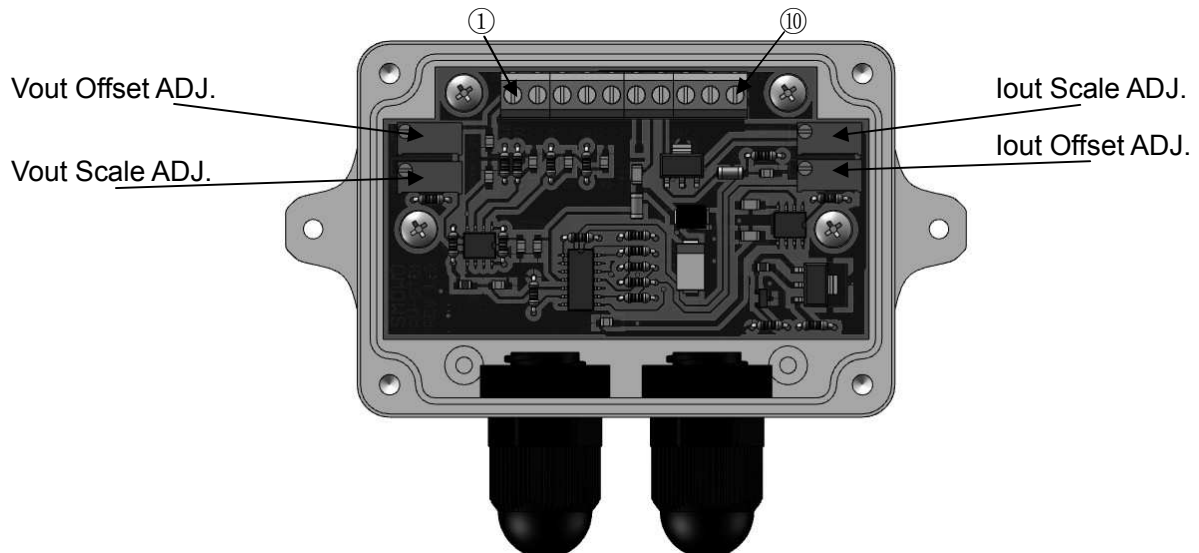


## Strain Gauge Amplifier



### **Specifications:**

Input signal	Full bridge strain gauge/Load cell	Note
Bridge resistor	<2K $\Omega$	
Sensitivity	1.5~2.1mV/V	
Excitation voltage	7.5V DC	
Excitation current	<100mA@12V supply <50mA@24V supply	
Power supply	12~26V DC vs. 0~5V output 18~26V DC vs. 0~10V & 4~20mA output	
Linear	0.3%	
Temperature coefficient	50ppm@10~30°C, 100ppm full work temperature range	
Operating temperature	0~50°C	
Weight	90g	
Dimension	115mm×80mm×35mm (bolt center: 97mm)	

### **Wiring:**

Terminal No.	1	2	3	4	5	6	7	8	9	10
Define	To Sensor					Power supply & Output				
	EXC+	SIG+	SIG-	EXC-	Shield	12~26V DC	Iout	Vout	Common.	Shield