



榮豐工業股份有限公司
RONG FENG INDUSTRIAL CO., LTD.

180 ChengKung 3rd. Rd., Nantou City, Taiwan 540
Tel :886-49-2252421/5
Fax:886-49-2253647
<http://rongfeng.com.tw>
e-mail:rongfeng@tcts.seed.net.tw

AC SOCKET



SS-7B-VDE

STANNDAAARD:IEC 320 C14

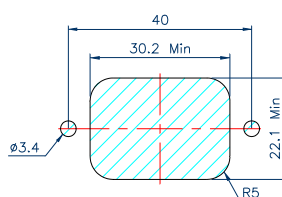
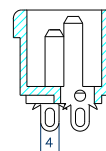
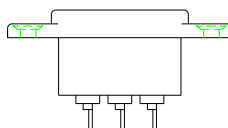
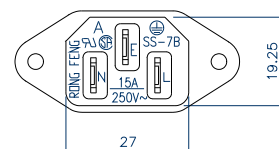
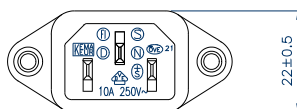
RATING :15A250V AC

APPROVALS :UL/CSA

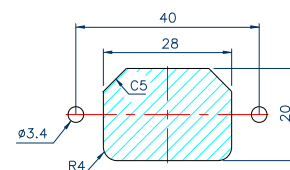
RATING :10A 250V AC

APPROVALS :VDE/DEMKO/NAMKO/
SEV/SEMKO/FIMKO/KEMA/CCEE

| | X | MODE |
|------------|-----|------|
| SS-7B-VDE- | 4.8 | |
| | 4.0 | |



Mounting inlet flange at back of cover.



Mounting inlet flange in front of cover.