



## PT-6

6 mm Carbon  
Potentiometer

### FEATURES

- Carbon resistive element.
- Dust proof enclosure.
- Polyester substrate.
- Also upon request:
  - Wiper positioned at 50% or fully clockwise
  - Supplied in magazines for automatic insertion
  - Long life model PT-6...E (10,000 cycles)
  - Without crimping model. PT-6...SC
  - Housing available in self extinguishable plastic (VL94V0)

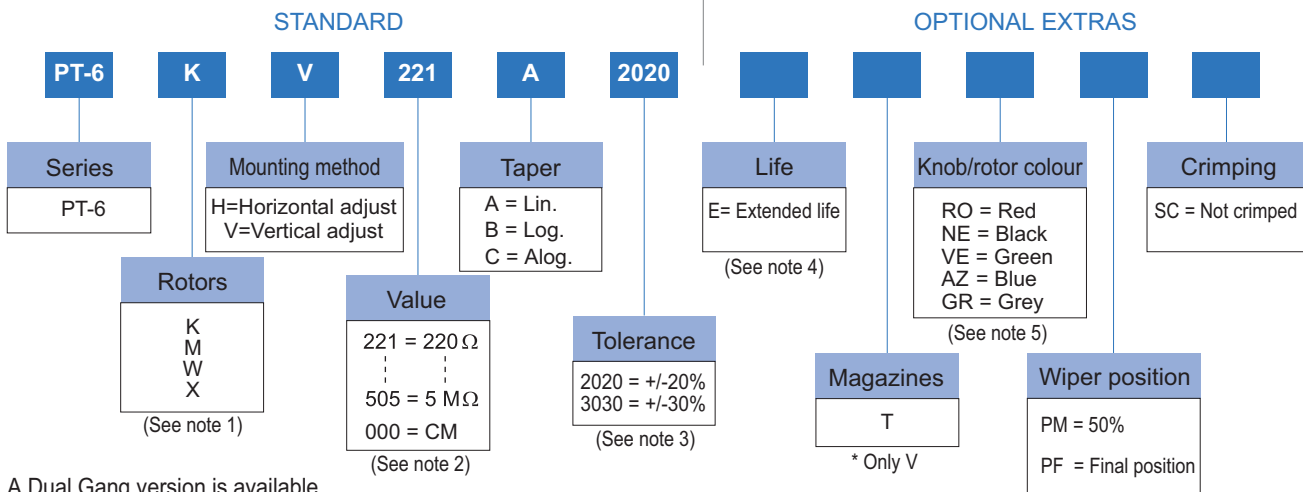
### MECHANICAL SPECIFICATIONS

- Mechanical Rotation angle:  $235^\circ \pm 5^\circ$
- Electrical Rotation angle:  $200^\circ \pm 20^\circ$
- Torque: 0.2 to 2 Ncm.  
(0.3 to 2.7 in-oz)
- Stop torque: > 4 Ncm. (> 5.6 in-oz)

### ELECTRICAL SPECIFICATIONS

- Range of values (\*):  $220\Omega \leq R_n \leq 5M$  (Decad. 1.0 - 2.0 - 2.2 - 2.5 - 4.7 - 5.0)
  - Tolerance (\*):  $220\Omega \leq R_n \leq 1M\Omega$  .....  $\pm 20\%$   
 $1M\Omega < R_n \leq 5M\Omega$  .....  $\pm 30\%$
  - Max. Voltage: 100 VDC (lin), 50 VDC (no lin)
  - Nominal Power  $50^\circ\text{C}$  ( $122^\circ\text{F}$ ) (see power rating curve)  
0.1 W (lin) 0.05 W (no lin)
  - Taper (\*) (Log & Alog. only  $R_n \geq 1K$ )  
Lin; Log; Alog.
  - Residual resistance(\*):  $\leq 5 \cdot 10^{-3} R_n$  (5 $\Omega$  min)
  - Equivalent Noise Resistance:  $\leq 3\% R_n$  (3 $\Omega$  min)
  - Operating Temperature\*\*:  $-25^\circ\text{C}$   $+70^\circ\text{C}$  ( $-13^\circ\text{F}$   $+158^\circ\text{F}$ )
- (\*) Others upon request.      \*\* Up to  $85^\circ\text{C}$  depending on application

### HOW TO ORDER



A Dual Gang version is available  
(see Low Torque Ganged Trimmer data sheet).

#### NOTES:

- Adjust. type: «X» is only available with horizontal adjusting method.
- Value: – Code:  $\frac{22}{1} = 220\Omega$   
 – 000 = CM = Switch (see diagram)  
 Number of zeros  
 First two digits.
- Tolerance (non standard): Upon request: Code eg.:  $\frac{+7}{-5} = \frac{07}{05}$   
 Negative tolerance  
 Positive tolerance
- Life: • Normal = 500 cycles • Long = 10,000 cycles
- Potentiometer without knob, only the rotor. Potentiometer with knob, only the knob.

NOTE: The information contained here should be used for reference purposes only.

## HOW TO ORDER CUSTOM DRAWING

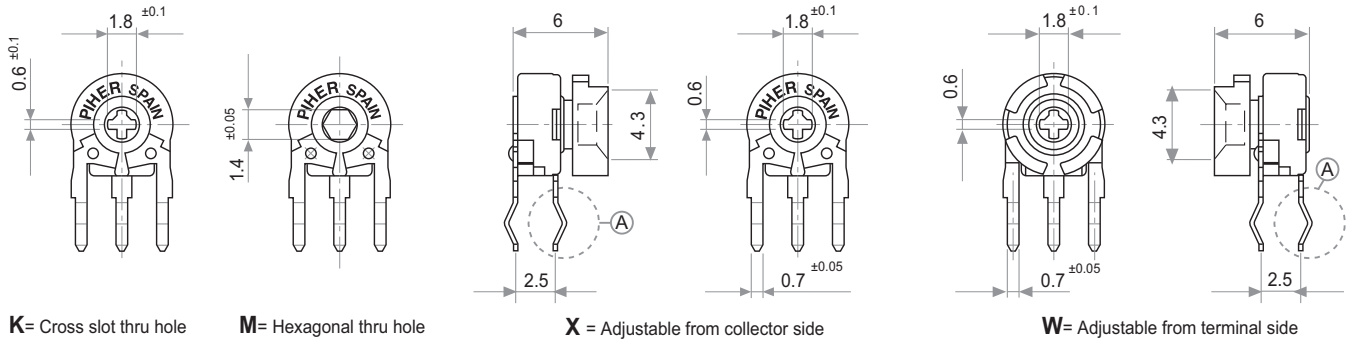
PT-6 KV + DRAWING NUMBER (Max. 16 characters)

This way of ordering should be used for options which are not included in the "How to order" standard and optional extras.

## STANDARD OPTIONS

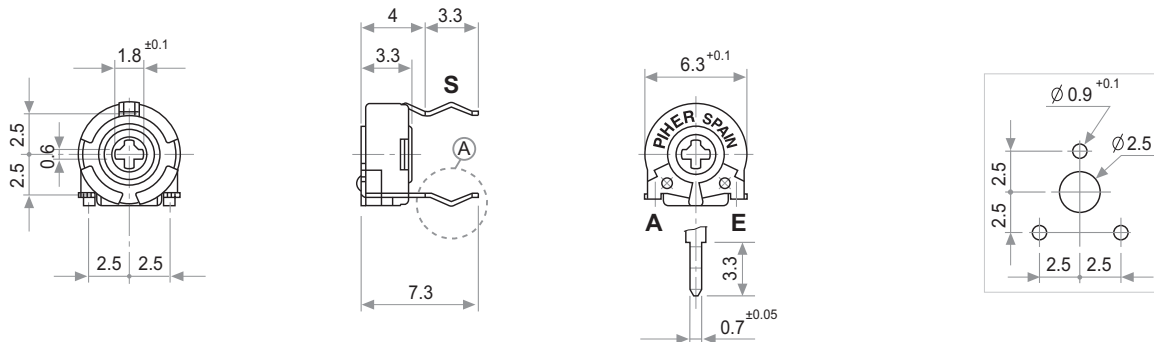
Mechanical life .....	500 cycles
Packing .....	Bulk
Rotor colour .....	White
Wiper position .....	Initial
Crimping .....	With crimping

## ROTORS

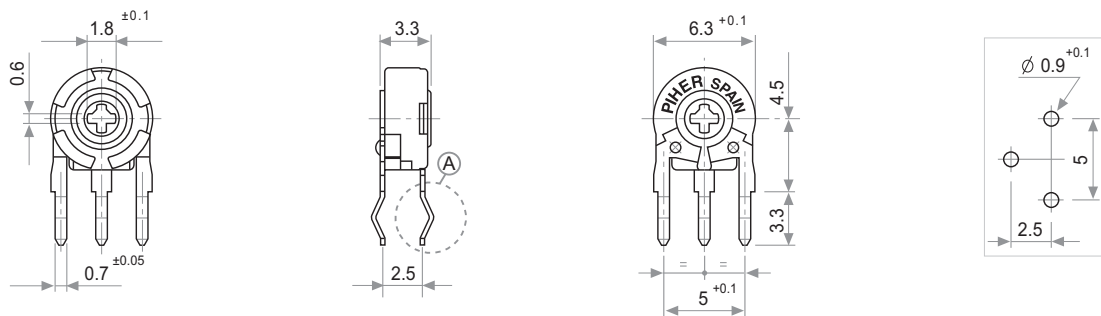


## MOUNTING METHODS. VARIATIONS

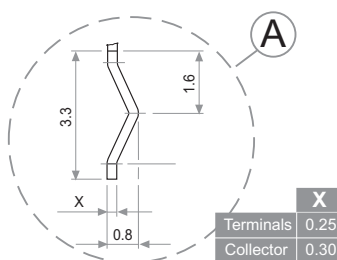
**v** = Horizontal mount / Vertical adjust



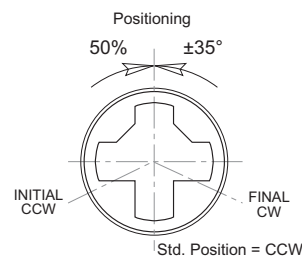
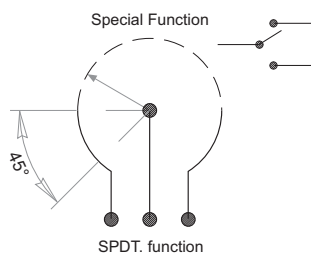
**h** = Vertical mount / Horizontal adjust



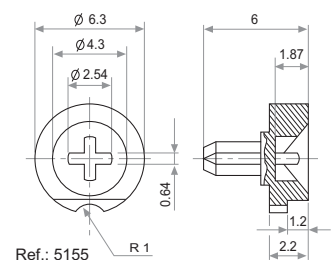
## DETAIL



## OPTIONS



## KNOB



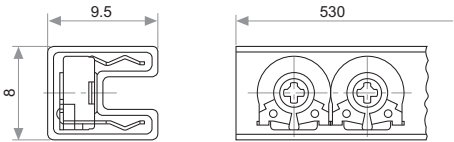
BOXES

Model	Units
All	1.000

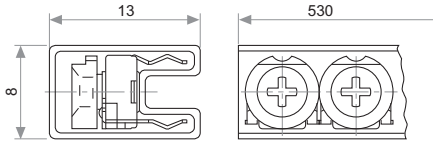
AUTOMATIC INSERTION

Magazines	Units per magazine
PT-6 V & PT-6 WV	80 Pieces

Magazines for PT-6 V with or without crimp.

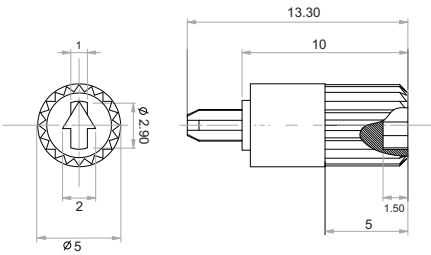


Magazines for PT-6 WV with or without crimp.



SHAFT

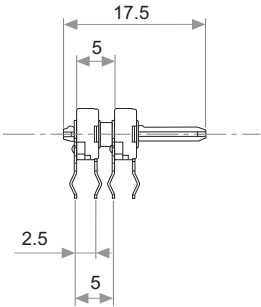
Ref.: 6132



Please order Shaft Separately

PT-6 DUAL GANG VERSION

For PT-6 dual gang version contact your nearest PIHER supplier



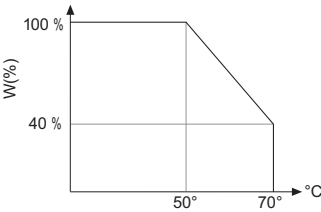
TESTS

ELECTRICAL LIFE	1.000 h. @ 50°C: 0.1 W
MECHANICAL LIFE (CYCLES)	200 @ 10 CPM ...15 CPM
TEMPERATURE COEFFICIENT	−25°C; +70°C
THERMAL CYCLING	16 h. @ 85°C; 2h. @ −25°C
DAMP HEAT	500 h. @ 40°C @ 95% HR
VIBRATION (for each plane X,Y,Z)	2 h. @ 10 Hz. ... 55 Hz.

TYPICAL VARIATIONS

±5 %
±3 % (Rn < 1 M.Ω)
±300 ppm (Rn < 100 K)
±2.5 %
±5 %
±2 %

POWER RATING CURVE



NOTE: Out of range values may not comply with these results.