

EMI/EMC FILTER

CN SERIES



FEATURES

- General purpose low cost plastic case.
- Suitable for the products that must conform to FCC, FTZ.
- Varieties in circuit and component for right selection.
- Good filtering characteristics for both normal mode and common mode.
- Epoxy molded for reliability.
- UL, CSA, TÜV approved.

APPLICATIONS

- Personal computers and peripherals.
- Digital equipments.
- For industrial equipments.
- For vending machines and OA equipments.

SPECIFICATIONS

Model	Rated Voltage (AC,DC)	Rated Current	Leakage Current (250V AC)	Temperature Rise	Operating Temperature
CN 1,2-F(H)20, F(H)20-2(4)	250V	2A	0.5mA max.	30℃ max.	-25℃ to +85℃ Including temperature rise * Fig 1
CN 1,2-F(H)30, F(H)30-2(4)	250V	3A	0.5mA max.	30℃ max.	
CN 1,2-F(H)60, F(H)60-2(4)	250V	6A	0.5mA max.	30℃ max.	
CN 3-F(H)10, F(H)10-2(4)	250V	1A	0.5mA max.	30℃ max.	
CN 3-F(H)20, F(H)20-2(4)	250V	2A	0.5mA max.	30℃ max.	
CN 3-F(H)30, F(H)30-2(4)	250V	3A	0.5mA max.	30℃ max.	

Note : All types are designed to meet the requirement of UL 1283, CSA 22.2, VDE 0565-3.

Test Voltage : 1500V AC one minute, line to earth.

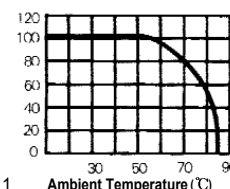
Insulation Resistance : 300 Mohm min. at 500V DC.

Voltage Drop : 1V max. (except CN3-F10) at rated current.

CN3-F10 : 1.5V max. at rated current.

Weight : CN 1,2 Series : 60g.

CN 3 Series : 50g.



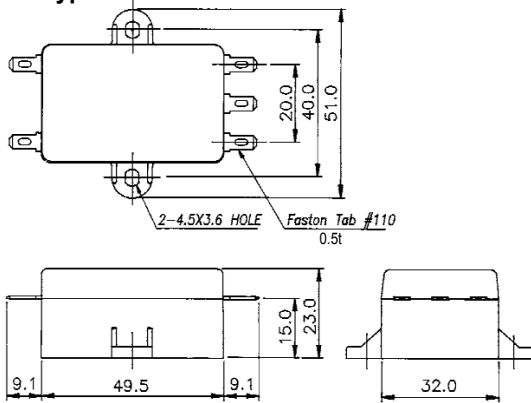
* Fig. 1

Model Number Construction

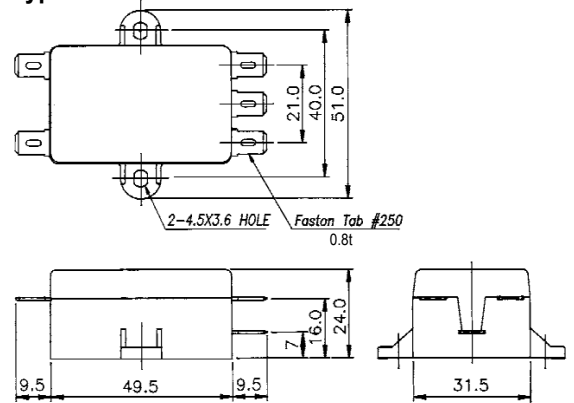
CN	1	F	10	2
Series Description:Screw Mounting /Plastic Case	Circuit:See Circuit Diagram next page	Input/Output Terminal Style F:Faston Tab #110 H:Faston Tab #250	Current Rating:AC rms 10:1 amp 20:2 amp 30:3 amp 60:6 amp	Line-Line Cap. Value 2:0.22 μ F(with resistor) 4:0.47 μ F(with resistor) Blank:0.1 μ F

Shapes and Dimensions

CN *-F Type



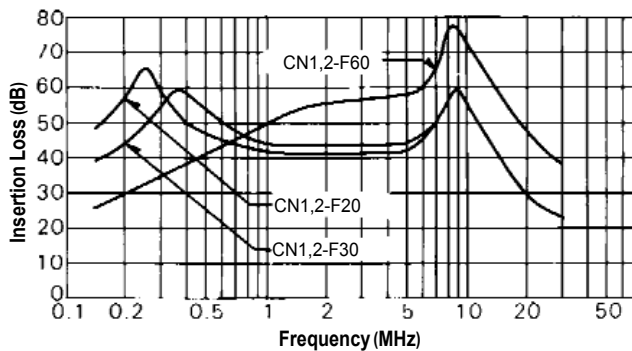
CN *-H Type



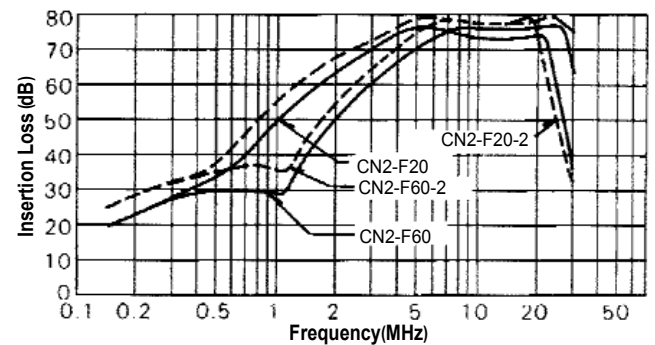
General Tolerance : ± 0.5
Unit : mm
Plastic Case

Attenuation Characteristics

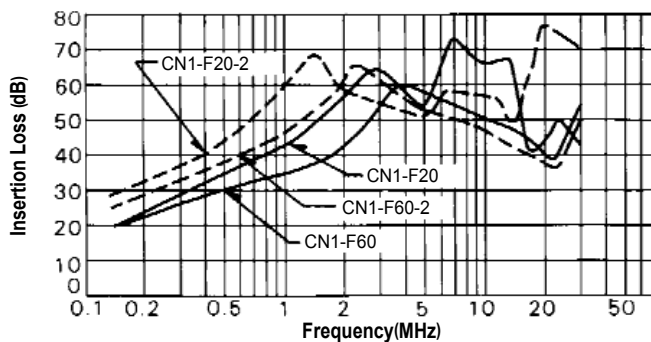
●CN Common Mode



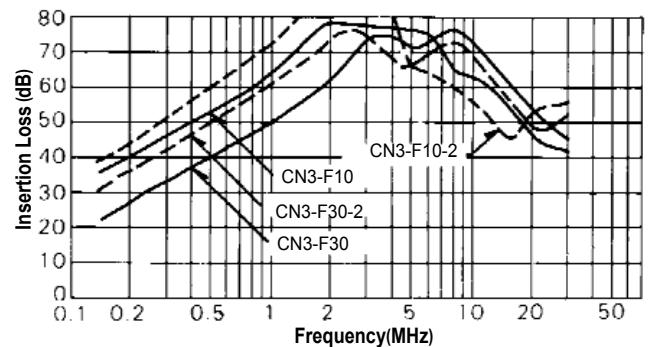
●CN2 Normal Mode



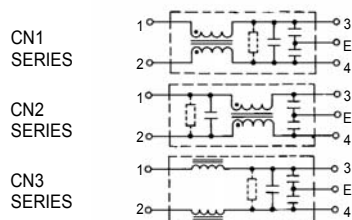
●CN1 Normal Mode



●CN3 Normal Mode



●Circuit Diagram



Bleeder Resistor is available only for
CN *-***-2 & CN *-***-4

●Measurement Configuration

