

EMI/EMC FILTER

CL SERIES



FEATURES

- Miniature general purpose plastic case with metal cover.
- Suitable for the products that must conform to FCC, FTZ.
- Varieties in circuit and component for right selection.
- Good filtering characteristics for both normal mode and common mode.
- Good shield effect by using metal cover.
- Epoxy molded for reliability.
- UL, CSA, TÜV approved.

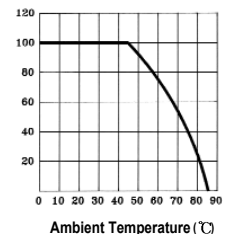
APPLICATIONS

- Personal computers and peripherals.
- Digital equipments.
- For industrial equipments.
- For vending machines and OA equipments.

SPECIFICATIONS

Model	Rated Voltage (AC,DC)	Rated Current	Leakage Current (250V AC)	Temperature Rise	Operating Temperature
CL 1,2 - F10 - 12	250V	1A	0.35mA max.	40℃ max.	-25℃ to +85℃ Including temperature rise
CL 1,2 - F10 - 13			0.50mA max.		
CL 1,2 - F16 - 12	250V	1.6A	0.35mA max.	40℃ max.	
CL 1,2 - F16 - 13			0.50mA max.		
CL 1,2 - F30 - 12	250V	3A	0.35mA max.	40℃ max	
CL 1,2 - F30 - 13			0.50mA max.		
CL 1,2 - F45 - 12	250V	4.5A	0.35mA max.	40℃ max	
CL 1,2 - F45 - 13			0.50mA max.		
CL 1,2 - F60 - 12	250V	6A	0.35mA max.	40℃ max	
CL 1,2 - F60 - 13			0.50mA max.		

Ambient Temperature (°C)	Temperature Rise (°C)
0	40
10	40
20	40
30	40
40	40
45	40
50	30
60	10
70	0
80	0
90	0



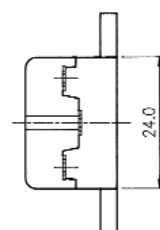
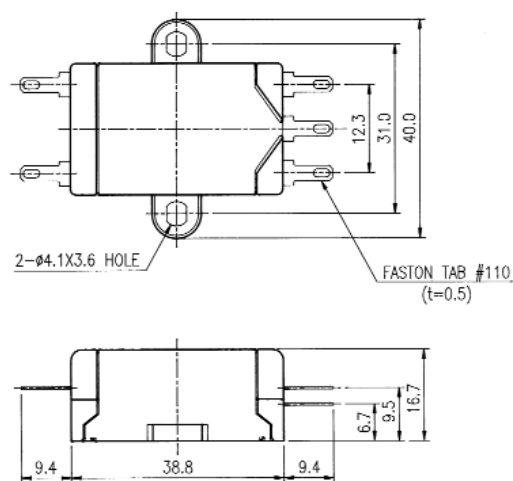
Note : All types are designed to meet the requirement of UL 1283, CSA 22.2, VDE 0565-3.

Test Voltage : 1500V AC one minute, line to earth.
Insulation Resistance : 300 Mohm min. at 500V DC.
Voltage Drop : 1V max. at rated current.
Weight : CL 1,2 Series : 27g.

Model Number Construction

CL	1	F	10	1	2
Series Description: Screw Mounting /Metallic shield Case	Circuit: See Circuit Diagram next page	Input/Output Terminal Style F: Faston Tab #110	Current Rating: AC rms 10: 1 amp 16: 1 amp 30: 3 amp 45: 4.5 amp 60: 6 amp	Line-Line Cap. Value 1: 0.1μF	Line-Gnd Cap. Value 2: 2200pF 3: 3300pF

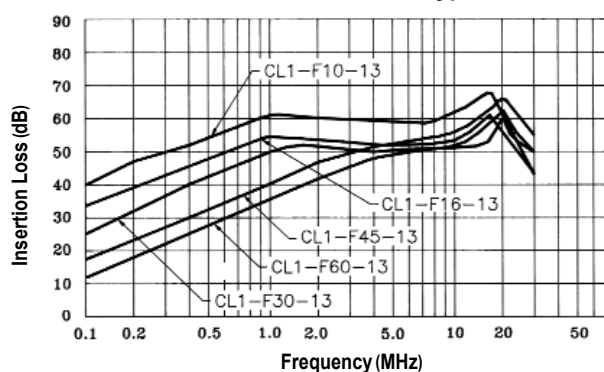
Shapes and Dimensions



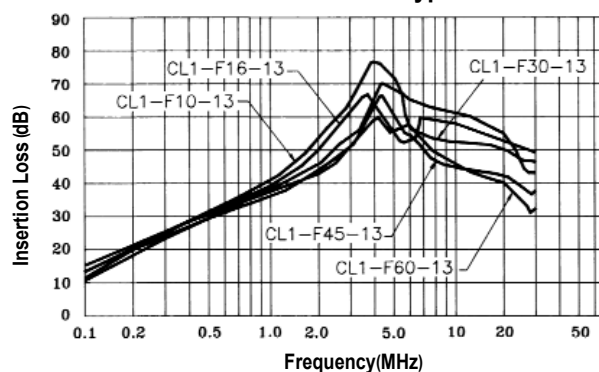
General Tolerance : ± 1.0
Unit : mm
Metallic Shield Case

Attenuation Characteristics

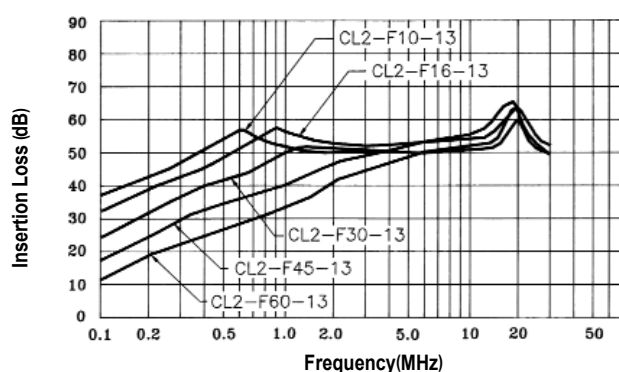
●Common Mode (CL1-F ** -13 types)



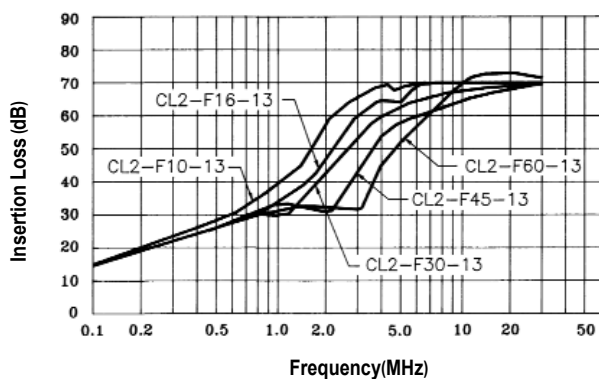
●Normal Mode (CL1-F ** -13 types)



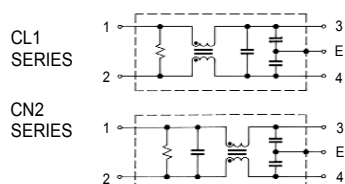
●Normal Mode (CL2-F ** -13 types)



●Normal Mode (CL2-F ** -13 types)



●Circuit Diagram



●Measurement Configuration

