

EMI/EMC FILTER

ES1 SERIES



FEATURES

- Suitable for the products that must conform to FCC, FTZ.
- Remarkable attenuation for high voltage impulse.
- Good shield effect by using metal case.
- Excellent filtering characteristics for both normal mode and common mode.
- Epoxy molded for reliability.
- Bidirectional structure effective for both noise from externally and internally generated.
- ES1-05(08/10/15/20) : UL, CSA, TÜV approved.

APPLICATIONS

- Digital equipments.
- Mini computers and peripherals.
- Measuring instruments, medical instruments.
- For equipment requiring very high impulse attenuation.
- Suitable for FA equipments.
- Industrial equipments like UPS, inverters, converters.
- Communication equipments.
- OA equipments like copy machine, FAX, etc.

SPECIFICATIONS

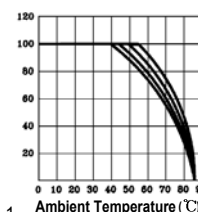
Model	Rated Voltage (AC,DC)	Rated Current	Temperature Rise	Operating Temperature
ES1-F05, T05	250V	5A	30℃max.	-25℃ to +85℃ Including temperature rise ※ Fig 1
ES1-F08, T08	250V	8A	30℃max.	
ES1-F10, T10	250V	10A	30℃max.	
ES1-F15, T15	250V	15A	35℃max.	
ES1-F20-B, T20	250V	20A	45℃max.	
ES1-T30	250V	30A	40℃max.	

- Many variations in X and Y capacitor value are available with approvals.
For the details, consult with local agent.

Note : Test Voltage : 1500V AC one minute, line to earth.
Insulation Resistance : 300 Mohm min. at 500V DC.
Leakage Current : 0.5mA max.
Voltage Drop : 1V max. at rated current.
Discharge Time : 0.4sec max.

Weight : 250g for ES1-Series except 720g for ES1-T30.

※ The temperature rise of ES1-20 can be decreased to 30℃ by mounting on 200mm×200mm×t:1.0mm steel chassis.



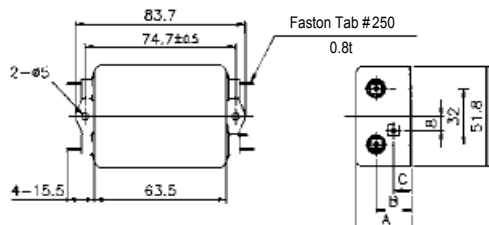
※Fig. 1

Model Number Construction

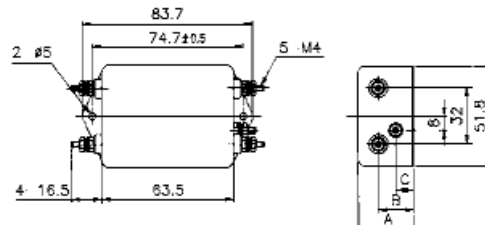
ES1	T	05	B
Series Description	Input/Output Terminal Style F: Faston Tab #250 T: M4 Stud M5 Stud(ES1-T30) only	Current Rating: AC rms 05: 5 amp, 08: 8 amp 10: 10 amp, 15: 15 20: 20 amp 30: 30 amp	Input/Output Terminal Style: Faston Tab #250 (ES1-F20 only)

Shapes and Dimensions

ES1-F **

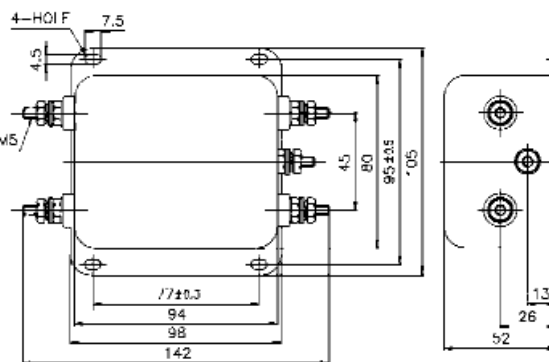


ES1-T **

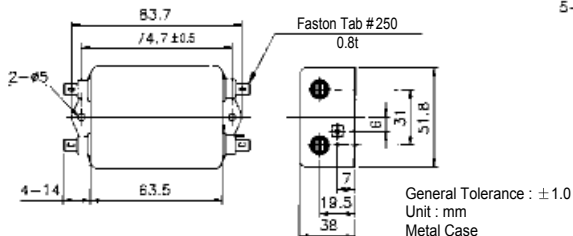


MODEL	A	B	C
ES1- 10, 15, 20	38	24	11
ES1- 05, 08	32	20	8

ES1-T30

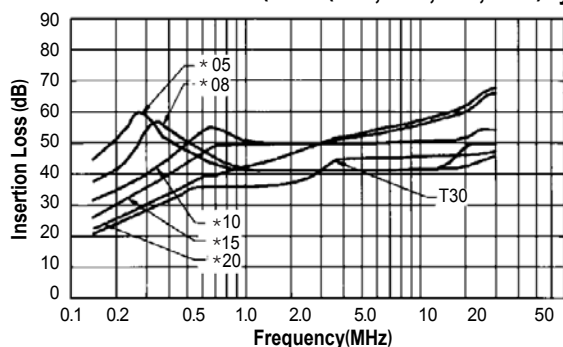


ES1-F20-B

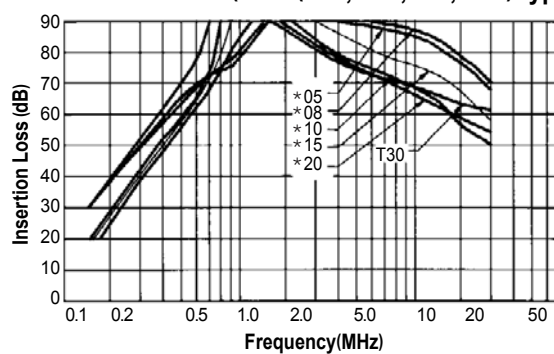


Attenuation Characteristics

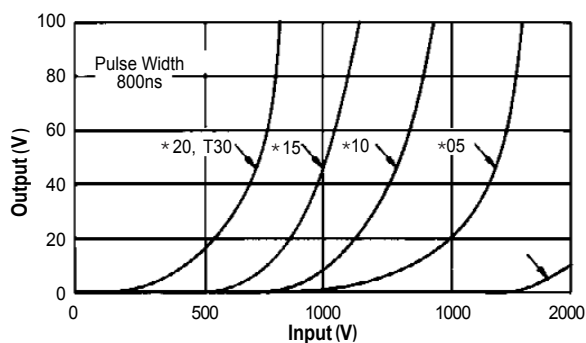
●Common mode (ES1-(*05, *08, *20, T30) types)



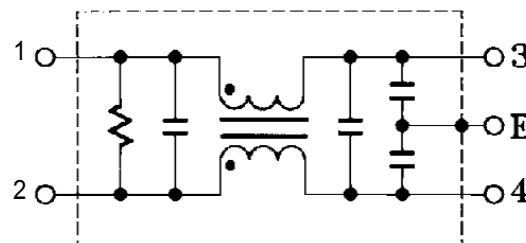
●Normal Mode (ES1-(*05, *08, *20, T30) types)



●Impulse Characteristics



●Circuit Diagram



●Measurement Configuration

