

# EMI/EMC FILTER

## ID SERIES



### FEATURES

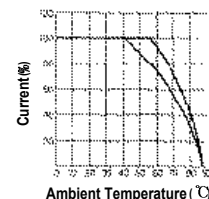
- Ideally suited for products that must conform to part 15, FCC regulations.
- Metal cased miniature type with high performance.
- Meet over voltage category II of IEC 664 and comply with IEC 950.
- Uses IEC connector that meets the safety standards of virtually all certifying organizations.
- Both soldering lug type and faston tab type are available.
- ID-\*\*-2(4)-\*-Type : UL, CSA, TÜV, SEMKO, NEMKO, FIMKO, DEMKO, SEV approved.
- ID-\*\*-A\*-\*-Type : UL, CSA, TÜV, SEMKO, FIMKO approved.
- ID-L03A\*-\*-Type : UL, CSA, TÜV, SEMKO approved.
- ID-L032(4)\*-\*-Type : UL, CSA, TÜV, SEMKO, DEMKO approved.
- ID-15\*-\*-Type : UL, CSA approved.

### APPLICATIONS

- Digital equipments.
- Personal computers and peripherals.
- Measuring instruments.
- For use in miniature equipments.
- For monitors and display units.

## SPECIFICATIONS

Model	Rated Voltage (AC,DC)	Rated Current	Temperature Ris	Operating Temperature
ID-012(4/A/B)2(3)-S(H)	250V	1A	30 °Cmax.	-25 °C to +85 °C Including temperature rise
ID-N012(4/A/B)2(3)-S(H)			50 °Cmax.	
ID-022(4/A/B)2(3)-S(H)			30 °Cmax.	
ID-N022(4/A/B)2(3)-S(H)	250V	2A	50 °Cmax.	
ID-032(4/A/B)2(3)-S(H)			30 °Cmax.	
ID-L03(L03)2(4/A/B)2(3)-S(H)			45 °Cmax.	
ID-N032(4/A/B)2(3)-S(H)	250V	3A	50 °Cmax.	
ID-062(4/A/B)2(3)-S(H)			45 °Cmax.	
ID-N062(4/A/B)2(3)-S(H)			50 °Cmax.	
ID-N082(4/A/B)2(3)-S(H)	250V	8A	45 °Cmax.	
ID-102(4/A/B)2(3)-S(H)			45 °Cmax.	
ID-L102(4/A/B)3-S(H)			45 °Cmax.	
ID-N102(4/A/B)2(3)-S(H)	250V	10A	50 °Cmax.	
ID-152(4/A)2(3)-S(H)			45 °Cmax.	
ID-****C-*				
ID-****D-*	250V	1,2,3,6,8,10,15A		
ID-****E-*				



Note : Test Voltage : 1500V AC one minute, line to earth.  
Insulation Resistance : 300 Mohm min. at 500V DC.  
Voltage Drop: 1V max. at rated current.  
Weight : 45g  
Inlet : Compatible with IEC-320.

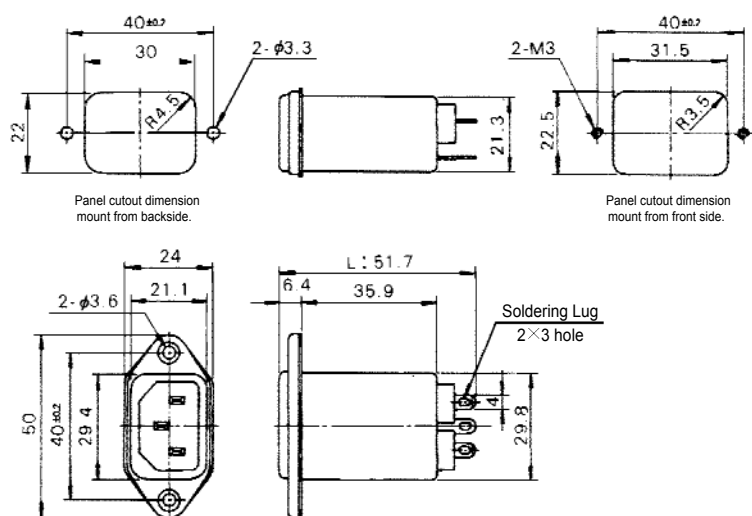
### Model Number Construction

I	D	03	4	2	S
Input Connector I:IEC Connector	D:Screw Mounting /Metal Case	01:1amp 02:2amp 03:3amp L03:3amp (higher performance then "03") 06:6amp N08:8amp 10:10amp N10:10amp (higher performance then "10") 15:15amp	2:0.022uF 4:0.047uF A:0.1uF B:0.15uF	2:2200pF 3:3300pF C:330pF D:470pF E:1000pF	Output Terminal Style S:Solder Lug H:Faston Tab #250

### Leakage Current(250V AC)

ID-**-2-*	ID-**-3-*	ID-****C-*	ID-****D-*	ID-****E-*
0.35mA max	0.50mA max	0.075mA max	0.10mA max	0.20mA max

## Shapes and Dimensions

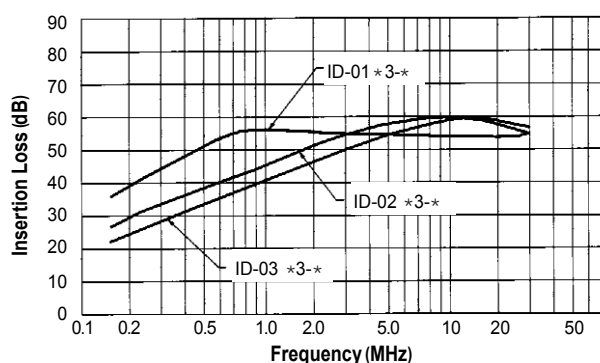


Alternate Terminal for ID-\*\*\*\* H  
: Faston Tab #250(L:53.5)/t=0.8

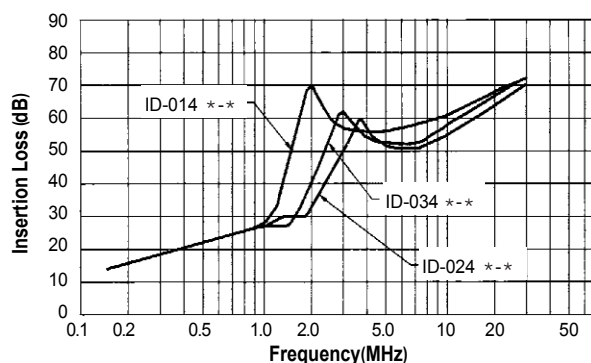
General Tolerance :  $\pm 0.3$   
Unit : mm  
Metal Case

## Attenuation Characteristics

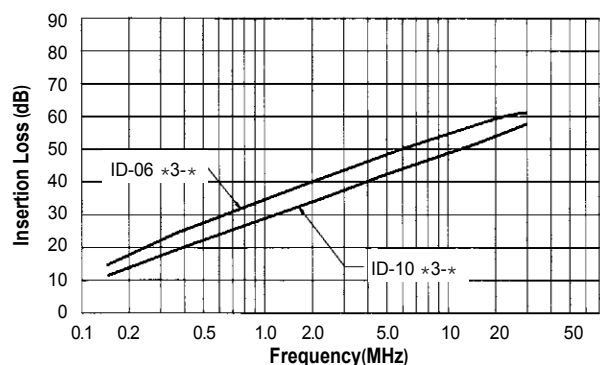
### ●Common Mode (ID-(01,02,03) \*3-\* types)



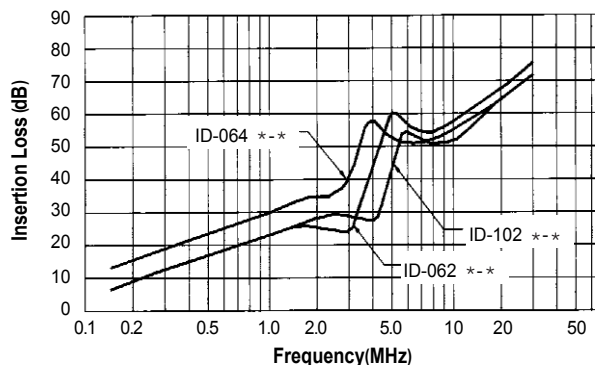
### ●Normal Mode (ID-(01,02,03)4 \*\* types)



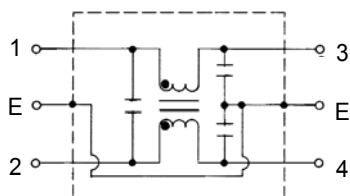
### ●Common Mode (ID-(06,10) \*3-\* types)



### ●Normal Mode (ID-(06,10)(2\*,4\*)-\* types)



### ●Circuit Diagram



### ●Measurement Configuration

