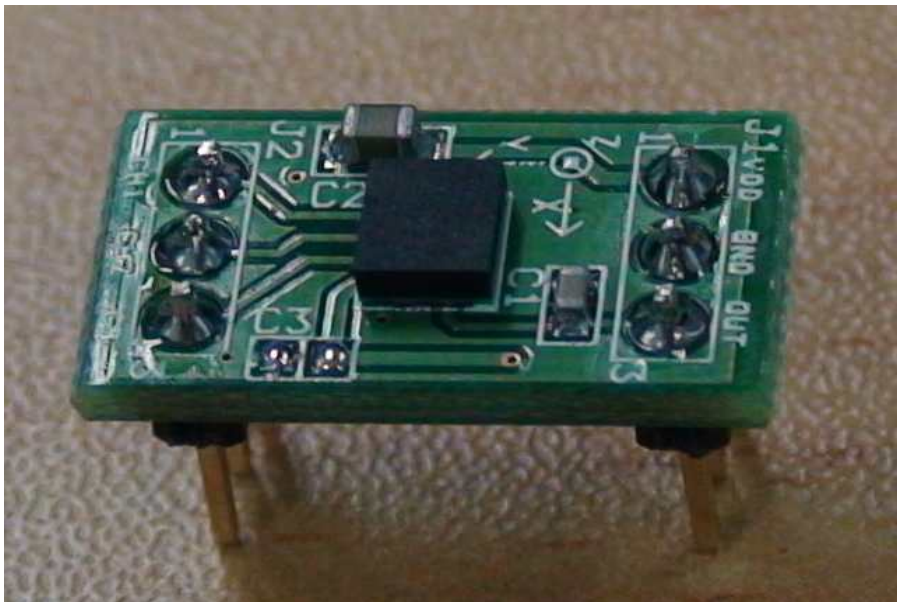


P0-MAA-00-01 Manual

(Magnetometer Module)



1. Overview

- AichSteel사의 AMI302 센서가 장착된 초소형 모듈
- CS, CH1, CH2 핀을 이용해 Output 축(X, Y, Z) 선택
- 3축(X, Y, Z)의 자기 세기를 측정하여 아날로그 신호로 출력
- 핀 헤더(2.54mm)를 사용하여 브레드 보드 및 만능 기판에 장착 가능

2. Specification

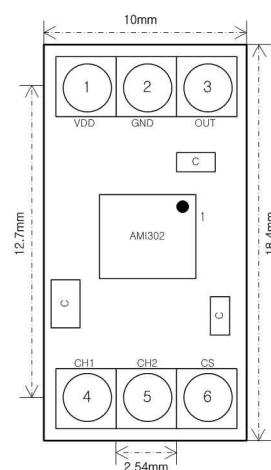
Characteristic	Value	
Supply Voltage	2.6 ~ 3.6V	
Supply Current	2.3 ~ 3mA	
Measuring range	$\pm 0.2\text{mT}$	
Sensitivity	$\pm 2.4\text{mV/uT}$	@3V source
Measuring Axis	x, y, z	Selectable
Linearity	1.6%	

3. OUT pin control

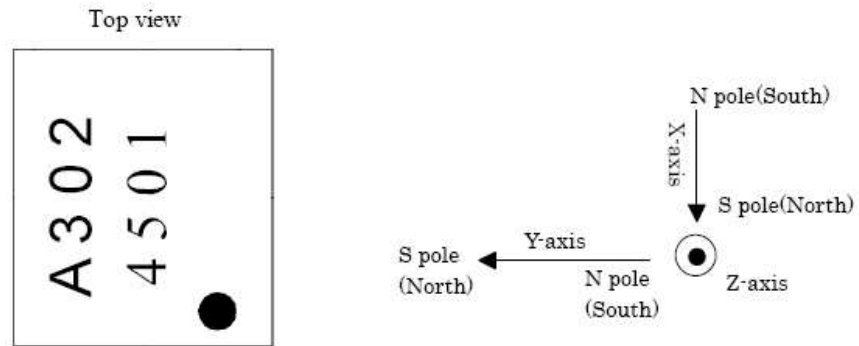
CS	CH1	CH2	axis
1	1	1	X-axis
1	1	0	Z-axis
1	0	0	Y-axis

4. Pin Out

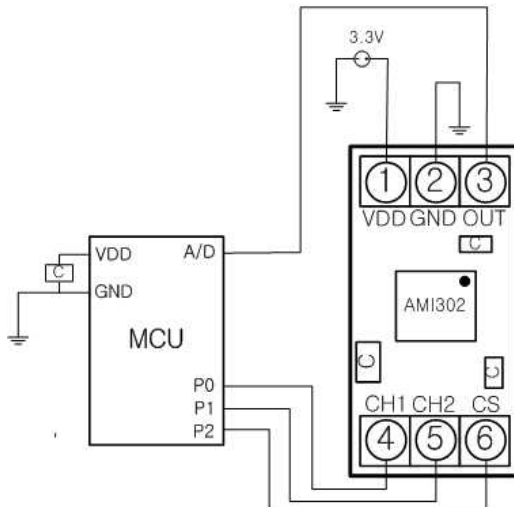
Pin No.	Function
1	VDD
2	GND
3	Mag_output
4	CH1
5	CH2
6	CS(sensor on/off)



5. Chip Notation



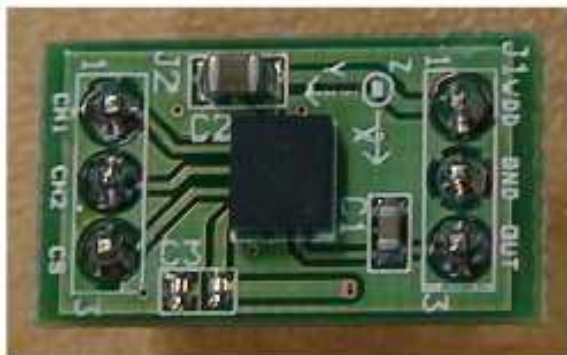
6. Application Circuit



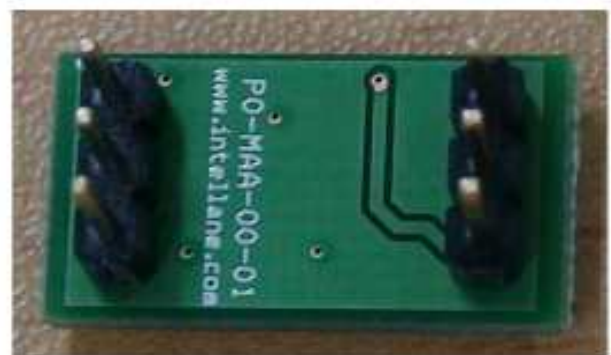
*P0, P1, P2의 신호를
control하여 Output 출력
X, Y, Z축을 설정

※위 Out pin control 참조

7. Product

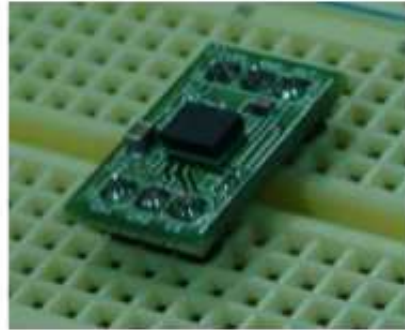
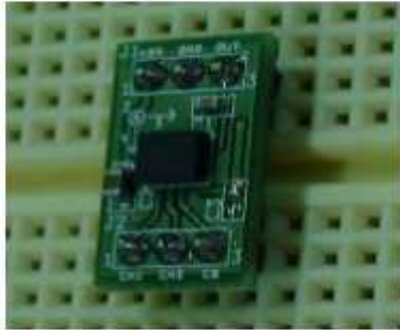


< Top View >

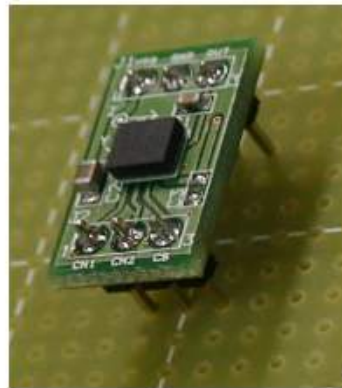
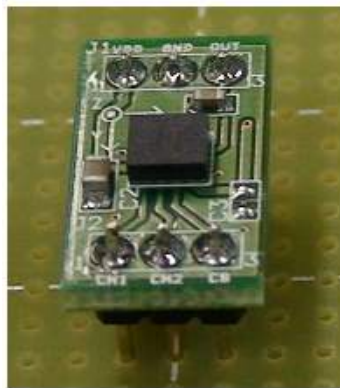


< Bottom View >

8. Application



< 브레드 보드 장착 >



< 만능기판 장착 >

9. Notes

- 제품 사용 시 본 매뉴얼을 숙지하여 사용
- 지자기센서 chip에 대한 상세 규격은 chip 매뉴얼 참조
(http://www.aichi-mi.com/3_products/ami302%20specificationspreliminary.pdf)

10. Contact

- 제조사: 인텔레인(주)
- 주소: 경기도 고양시 덕양구 화전동 200-1 중소벤처육성지원센터 301호
- 전화: 070-7010-6980
- Fax: 070-7016-0916
- Homepage: www.intellane.com

※ 본 매뉴얼에 대한 저작권은 인텔레인(주)에 있으며, 무단 도용을 금합니다.