

1000S Series



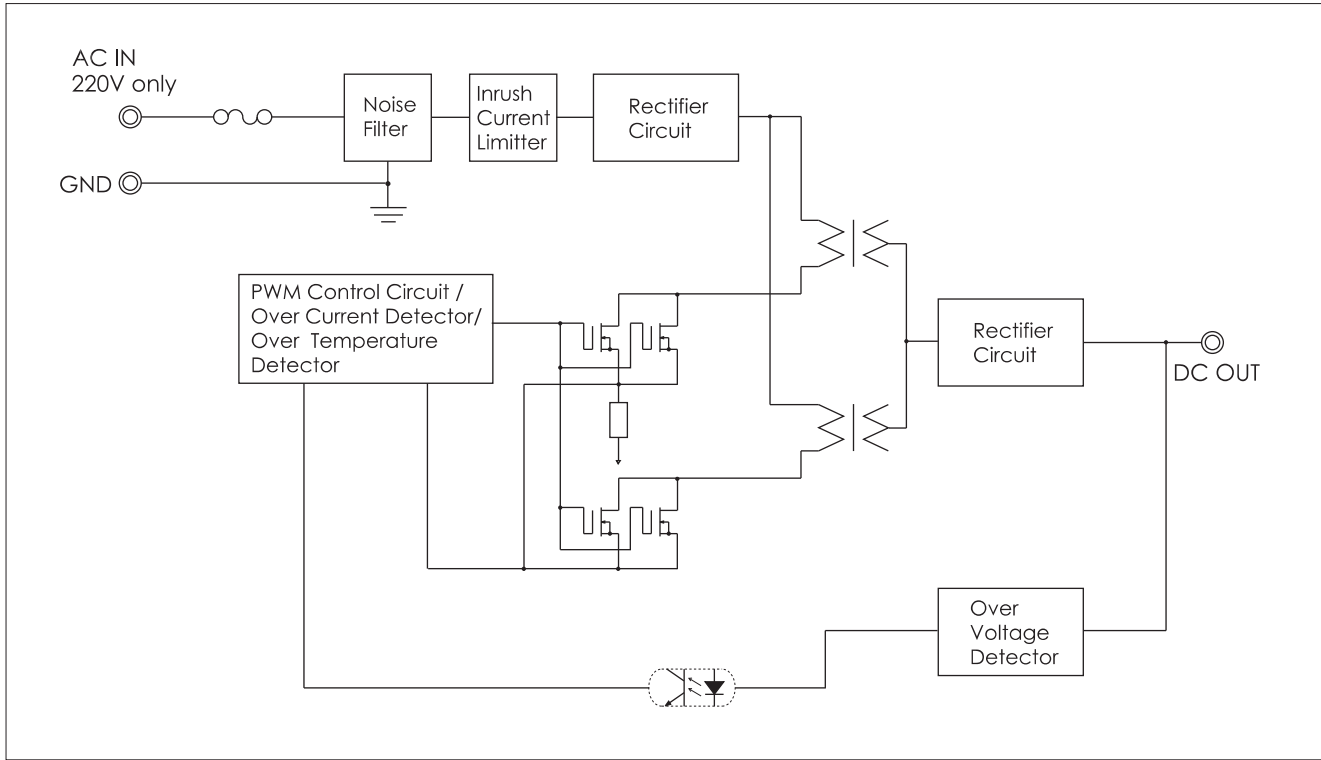
1000W 1-Channel

- **5V200A/12V83.3A/24V41.6A/28V35.7A/30V33.3A/36V27.7A/48V20.8A Output**
- **Input Voltage AC220V only**
- **Built-in Inrush Current Limiter, Over Current Protector and Over Voltage Protector**
- **Built-in Over Temperature Protection**
- **Approved by EN 60950-1 CE**

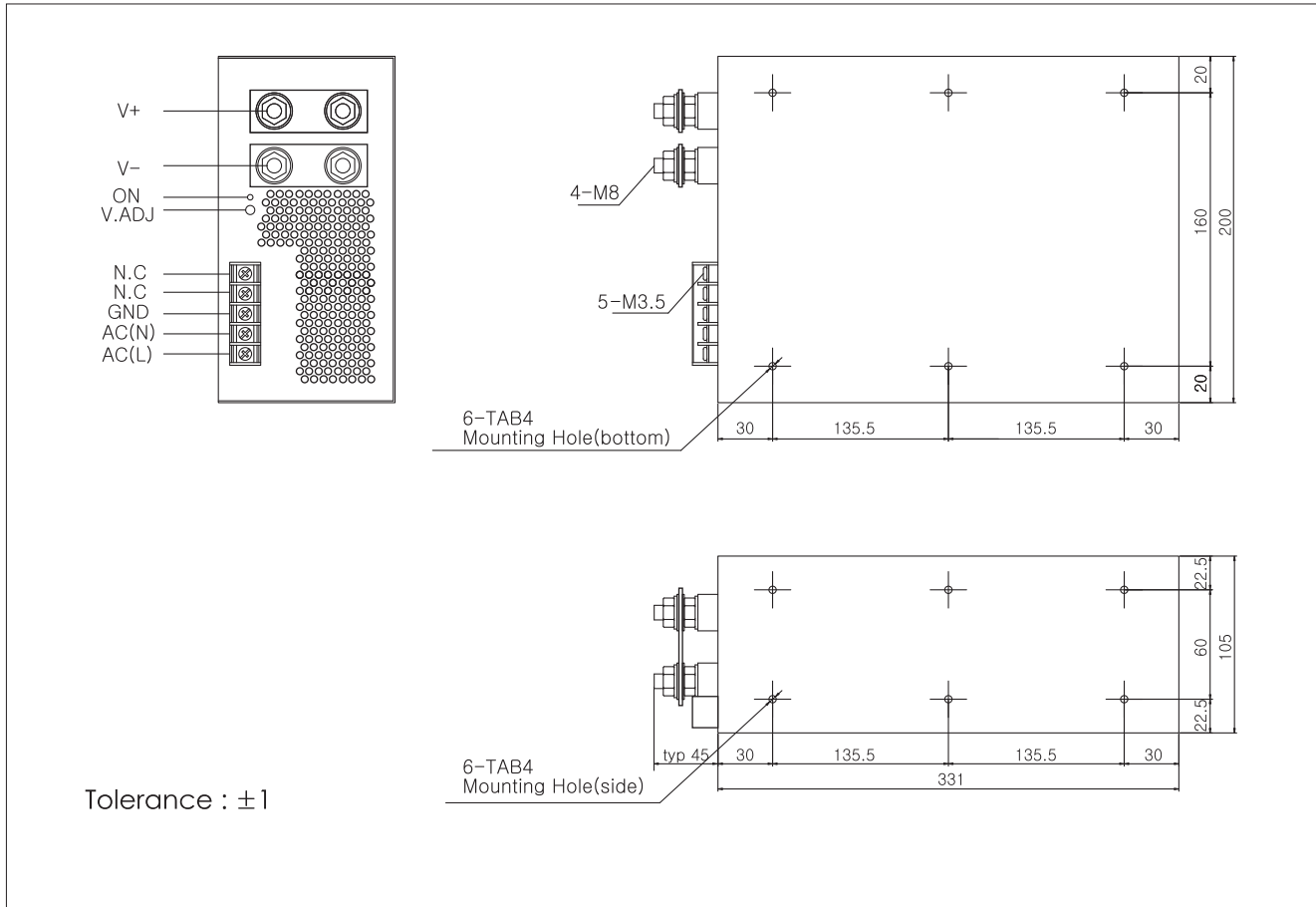
SPECIFICATIONS

Item		UP1000S05	UP1000S12	UP1000S24	UP1000S28	UP1000S30	UP1000S36	UP1000S48
INPUT	VOLTAGE	AC220V only 11A typ (ACIN 220V, Io=100%)						
	FREQUENCY	50/60Hz(47~63Hz)						
	EFFICIENCY	75% Typ	78% Typ	82% Typ	83% Typ	83% Typ	85% Typ	85% Typ
	INRUSH CURRENT	30A Typ(ACIN 110V, Io=100%)/ 60A Typ(ACIN 220V, Io=100%) at cold start						
OUTPUT	VOLTAGE [V]	5	12	24	28	30	36	48
	CURRENT [A]	200.0	83.3	41.6	35.7	33.3	27.7	20.8
	LINE REGULATION [mV]	25 Max	60 Max	120 Max	140 Max	150 Max	180 Max	240 Max
	LOAD REGULATION [mV]	50 Max	120 Max	240 Max	280 Max	300 Max	360 Max	480 Max
	RIPPLE [mVp-p]	50 Max	120 Max	240 Max	280 Max	300 Max	360 Max	480 Max
	RIPPLE NOISE [mVp-p]	100 Max	170 Max	290 Max	330 Max	350 Max	410 Max	530 Max
	TEMPERATURE DRIFT,0-50℃ [mV]	50 Max	120 Max	240 Max	280 Max	300 Max	360 Max	480 Max
	RISE TIME [msec]	1,500 Max (ACIN220V,Io=100%)						
	HOLDING TIME [msec]	20 Typ (ACIN220V,Io=100%)						
PROTEC-TION	OVER CURRENT PROTECTION	Works at over 110% of rating and recovers automatically						
	OVER VOLTAGE PROTECTION	Works at 115~140% of rating						
ISOLAT-ION	INPUT-OUTPUT	AC3,000V for 1 minute, DC500V 100Mohm (At room temp. & humid.)						
	INPUT-CASE, FG	AC1,500V for 1 minute, DC500V 100Mohm (At room temp. & humid.)						
	OUTPUT-CASE	AC500V for 1 minute, DC500V 100Mohm (At room temp. & humid.)						
ENVIRON-MENT	OPERATING TEMP. & HUMID.	-10~+50℃, 20~90%RH(Non condensing)						
	STORAGE TEMP. & HUMID.	-20~+75℃, 20~90%RH(Non condensing)						
	VIBRATION	10~55Hz at 1G 3 minutes period, 30 minutes along X, Y and Z axis						
	IMPACT	10G for 20 msec, Once on each X, Y and Z axis						
	APPROVALS		CE	CE			CE	CE

BLOCK DIAGRAM

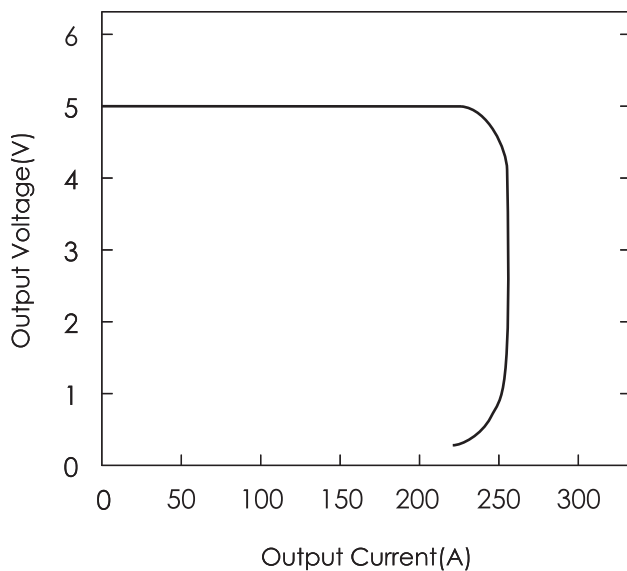


DIMENSIONS(UNITS : MM)

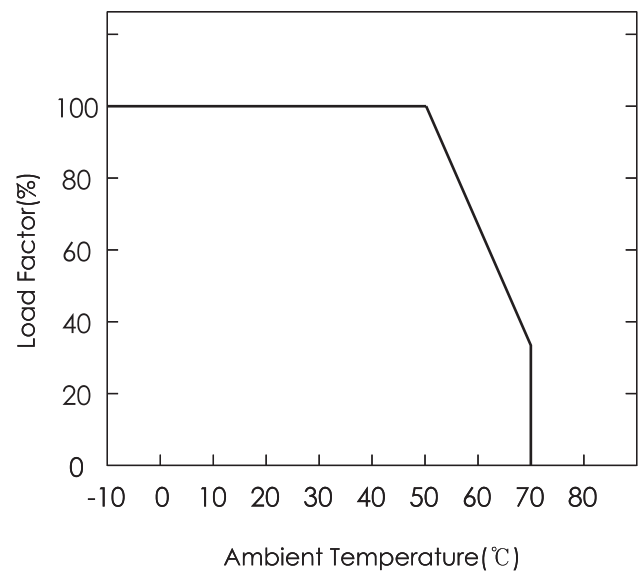


16. 1000S Series(1000S05)

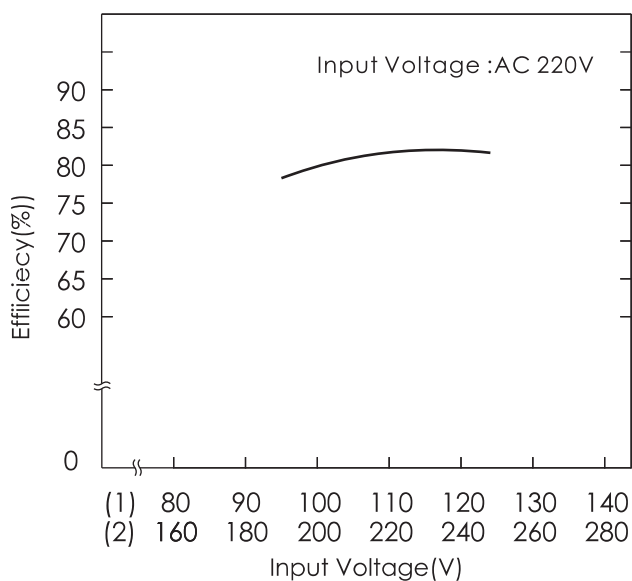
A. OVER CURRENT CHARACTERISTICS



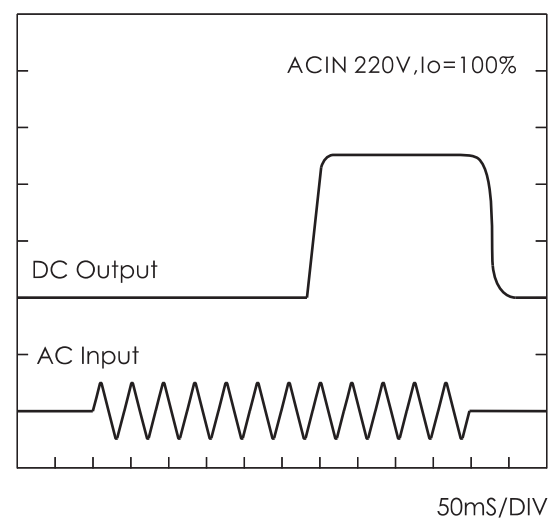
B. DERATING CHARACTERISTICS



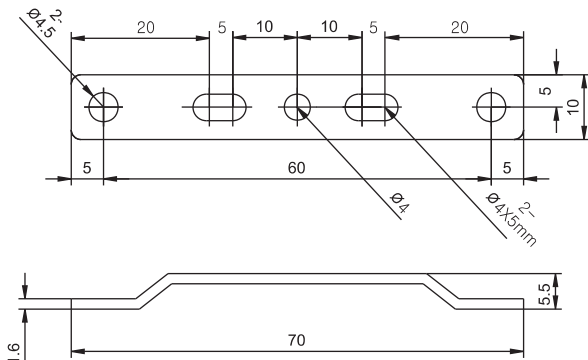
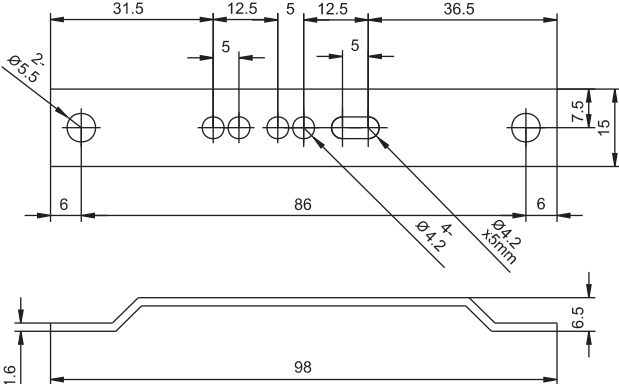
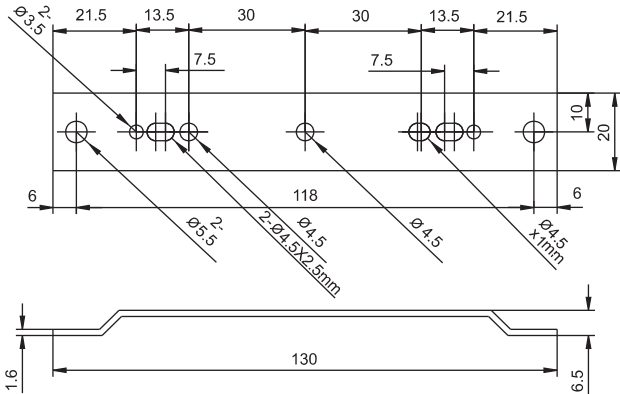
C. EFFICIENCY CHARACTERISTICS



D. RISING/FALLING TIME CHARACTERISTICS



BRACKET

MODEL	APPLICATION	DIMENSIONS(UNIT:mm)
BRACKET-A	15S Series 30S Series 50S Series 75S Series 100S Series 150S Series 200S Series 220S Series 15D Series 30D Series 50D Series 15T Series 30T Series 50T Series	 <p>Technical drawing of Bracket-A. The top view shows a rectangular plate with a total width of 60mm and a total length of 70mm. It features five mounting holes with a diameter of $\phi 4.5$mm. The hole spacing is 20mm between the first and second, 5mm between the second and third, 10mm between the third and fourth, 5mm between the fourth and fifth, and 20mm from the fifth hole to the right edge. The plate has a thickness of 1.6mm and a raised section of 5.5mm. The side view shows a profile with a total width of 70mm and a height of 5.5mm.</p>
BRACKET-B	300S Series 400S Series	 <p>Technical drawing of Bracket-B. The top view shows a rectangular plate with a total width of 86mm and a total length of 98mm. It features five mounting holes with a diameter of $\phi 5.5$mm. The hole spacing is 31.5mm between the first and second, 12.5mm between the second and third, 5mm between the third and fourth, 12.5mm between the fourth and fifth, and 36.5mm from the fifth hole to the right edge. The plate has a thickness of 1.6mm and a raised section of 6.5mm. The side view shows a profile with a total width of 98mm and a height of 6.5mm.</p>
BRACKET-C	500S Series 600S Series 650S Series 750S Series 850S Series 1000S Series 1200S Series 1500S Series	 <p>Technical drawing of Bracket-C. The top view shows a rectangular plate with a total width of 118mm and a total length of 130mm. It features five mounting holes with a diameter of $\phi 4.5$mm. The hole spacing is 21.5mm between the first and second, 13.5mm between the second and third, 30mm between the third and fourth, 30mm between the fourth and fifth, and 13.5mm between the fifth and sixth, and 21.5mm from the sixth hole to the right edge. The plate has a thickness of 1.6mm and a raised section of 6.5mm. The side view shows a profile with a total width of 130mm and a height of 6.5mm.</p>

C E R T I F I C A T E



of Conformity
Low Voltage Directive 2006/95/EC

Registration No.: AN 50124270 0001

Report No.: 13500059 001

Holder: Union Elecom Co., Ltd.
(Chunui Techno Park 1st 1207~1211)
200-1m Chunui-dong, Wonmi-gu,
Bucheon, Gyeonggi-do 420-857
Rep. of Korea

Product: Switching Power Supply
Switching Mode Power Supply

Identification: Type Designations: UP1500S** , UP1200S** , UP1000S**
(** = 24, 36 or 48)
UP1000S12

Serial no. : n.a. (Prototype)

This certificate of conformity is based on an evaluation of a sample of the above mentioned product. Technical Report and documentation are at the Licence Holder's disposal. This is to certify that the tested sample is in conformity with all revision of Annex I of Council Directive 2006/95/EC, in its latest amended version, referred to as the Low Voltage Directive. This certificate does not imply assessment of the series-production of the product and does not permit the use of a TÜV Rheinland mark of conformity. The holder of the certificate is authorized to use this certificate in connection with the EC declaration of conformity according to Annex III of the Directive.

Certification Body

Cologne, 04.02.2008

A blue ink signature of Dr. R. Frankenberger.

Dr. R. Frankenberger

TÜV Rheinland Product Safety GmbH - Am Grauen Stein - D-51105 Köln

CE The CE marking may be used if all relevant and effective EC Directives are complied with. CE