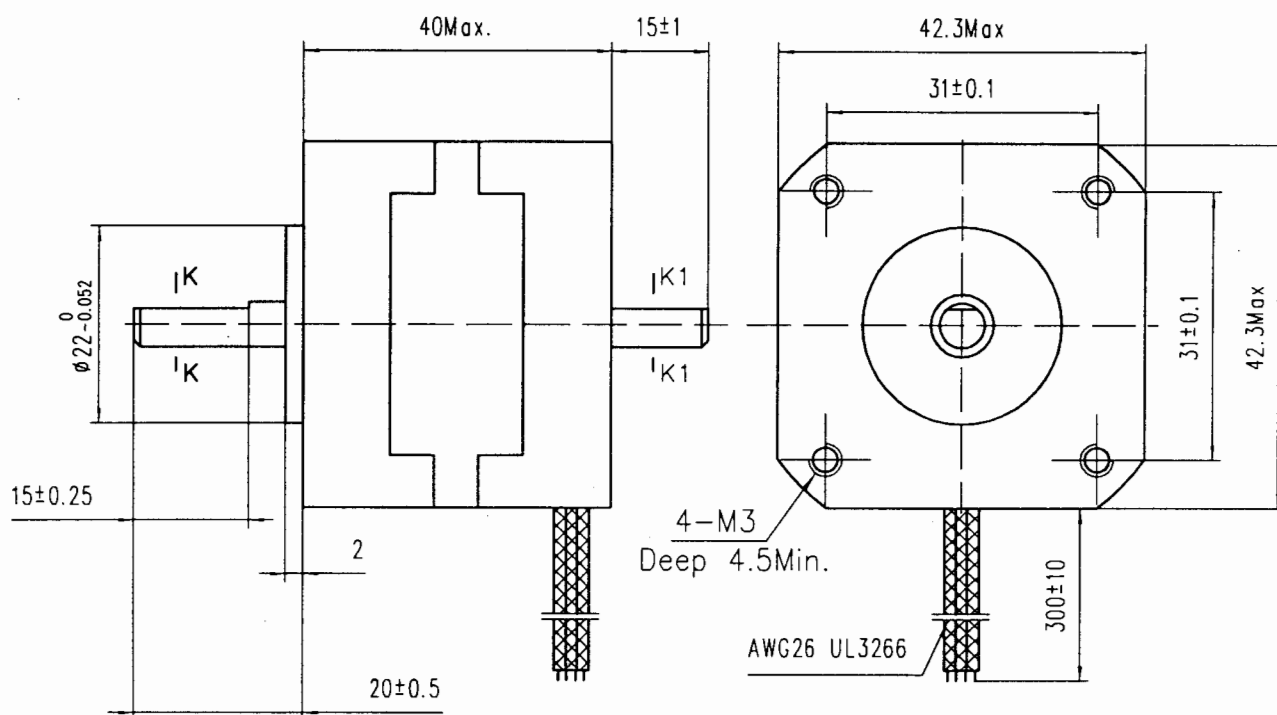


HYBRID STEPPING MOTOR TYPE 17HD3610-01

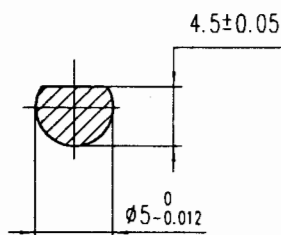
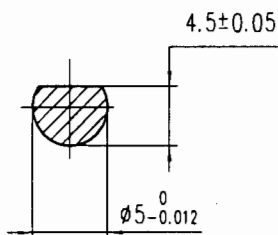
General specifications		Electrical specifications		Wiring Diagram
Step angle	$1.8^{\circ} \pm 5\%$	Rated voltage	24 V	
Number of phase	4	Rated current	0.2 A	
Insulation resistance	100Mohm Min.(500V DC)	Resistance per phase	$120\Omega \pm 10\%$	
Insulation class	Class B	Inductance per phase	$80\text{mH} \pm 20\%$	
Rotor inertia	$57 \text{ g} \cdot \text{cm}^2$	Holding torque	260 mNm	
Mass	0.24 kg	Detent torque	18 mNm	

Dimensions unit=mm



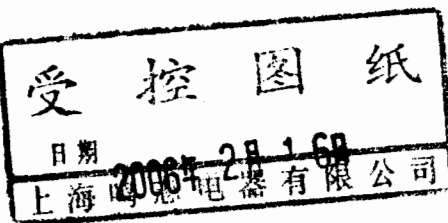
K-K

K1-K1



comment:

REV.	DESCRIPTION	DATE
B	Change the label MS9.005.001 to MS9.005.193	06.2.16



LABEL MS9.005.193