

# Water leak sensor user manual

## Features:

Size: L64\*W15.6\*H12.7mm

Housing: ABS , white

Two wires connection

Pin out: there is direction of sensor wire connected:

Red wire connected to +

White wire connected to -

## Application:

Water valve

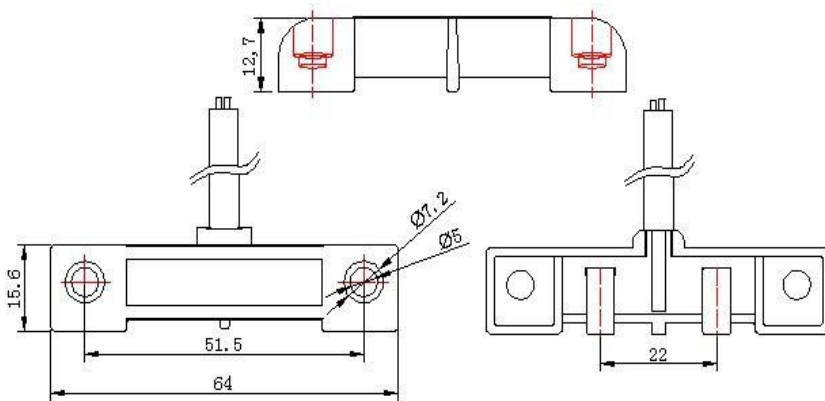
Smart water meter

Home automation

Security solutions

Signal output	NPN
Load power	0.5W
Working Voltage	5-12VDC
Max current	0.15A
Working temperature	0℃~ +50℃

## Dimension (unit: mm)



The product utilizes the principle of liquid conductivity for reliable performance and easy installation. When the liquid reaches the two probes of the detector, it sends a switch signal to the alarm host. This product is not used independently. It will not sound an alarm when it meets water.

After installation these units should be tested with water and inspected annually. If there is any corrosion or damage the sensor should be replaced.