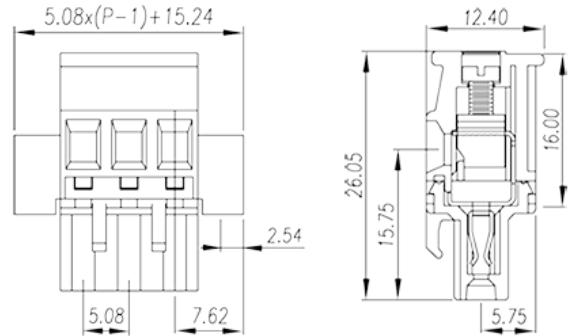
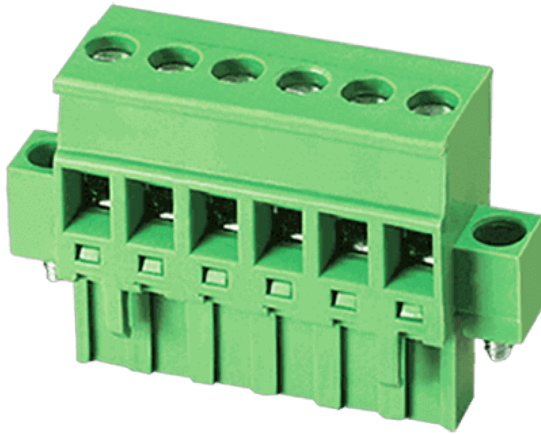


2ESDPM-XXP

PCB Terminal blocks > PCB Connector-Plug



Product Description

Pitch: 5.08 mm , M2.5 , 300V, 15A

General information

Short description	PCB Connector Plug , Screw Connection
Connection method	Screw Connection
Type of locking	With screw flange
Category	Screw Connection
Pitch mm	5.08
Thread	M2.5

Material information

Insulation material	PA66
Flame retardant rating , compliant with UL94	V0
Color	Green
Conductor material	Copper Alloy
Plating of conductor surface	Tinned

Connection data-UL

Stripping Length mm	7~8
Slotted screwdriver size (Blade thickness x Width) mm	0.6x3.5

Philips screwdriver size	PH1
Rated torque (N.m)	0.5
Rated voltage V (UL/CUL standard group B)	300
Rated current A (UL/CUL standard group B)	15
AWG, compliant with UL/CUL, Sol. max (group B)	12
AWG, compliant with UL/CUL, Sol. min (group B)	28
AWG, compliant with UL/CUL, Str. max (group B)	12
AWG, compliant with UL/CUL, Str. min (group B)	30
Rated voltage V (UL/CUL standard group D)	300
Rated current A (UL/CUL standard group D)	10
AWG, compliant with UL/CUL, Sol. max (group D)	12
AWG, compliant with UL/CUL, Sol. min (group D)	28
AWG, compliant with UL/CUL, Str. max (group D)	12
AWG, compliant with UL/CUL, Str. min (group D)	30

Connection data-IEC

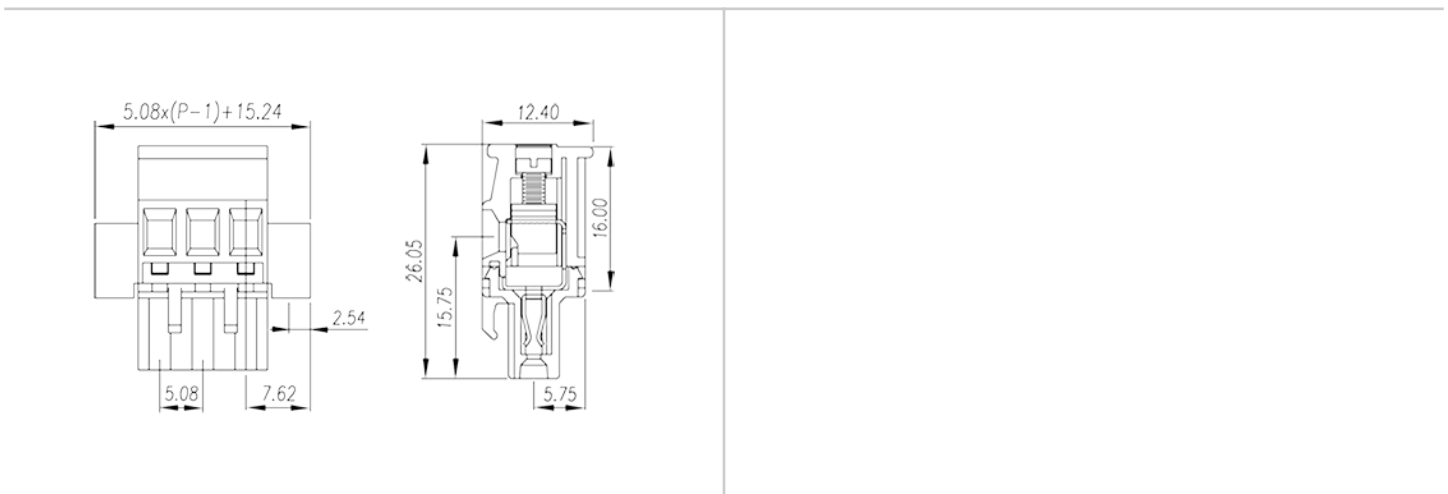
Rated data	IEC 61984
Surge voltage category	II
Pollution degree	2
Insulating material group	I
Rated current A	18
Rated voltage V	600
Rated voltage V (II/2)	600
Rated voltage V (III/2)	320
Rated voltage V (III/3)	250
Rated impulse voltage KV (II/2)	4
Rated impulse voltage KV (III/2)	4
Rated impulse voltage KV (III/3)	4
Conductor cross section solid. min mm ²	0.2
Conductor cross section solid.max mm ²	4
Conductor cross section stranded. min mm ²	0.2
Conductor cross section stranded. max mm ²	4
Conductor cross section flexible, with max ferrule without plastic sleeve mm ²	2.5
Conductor cross section flexible, with min ferrule without plastic sleeve mm ²	0.25

Conductor cross section flexible, with max ferrule with plastic sleeve mm ²	2.5
Conductor cross section flexible, with min ferrule with plastic sleeve mm ²	0.25
2 conductors with same cross section, solid, max mm ²	1.5
2 conductors with same cross section, stranded, max mm ²	1.5
2 conductors with same cross section flexible, with max ferrule without plastic sleeve mm ²	0.75
2 conductors with same cross section flexible, with min ferrule without plastic sleeve mm ²	0.25
2 conductors with same cross section flexible, max twin ferrules with plastic sleeve mm ²	1.5
2 conductors with same cross section flexible, min twin ferrules with plastic sleeve mm ²	0.5

Environment & Safety

Back of the hand protection (YES or NO)	YES
Finger protection (YES or NO)	YES
Operating temperature. max °C	115
Operating temperature. min °C	-40

Drawings

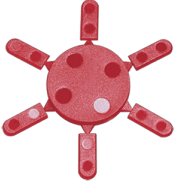


Accessories

ESDK1



UL94-V0 class of insulating material
For ESD series ,but not with 2ESDV terminal blocks ,Orange color,Using



ESDK2

For ESD series , but not with 2ESDV terminal blocks , Red color , using UL94-V0 class of insulating material

Approvals

