

CR-ZF-BMA280 Board

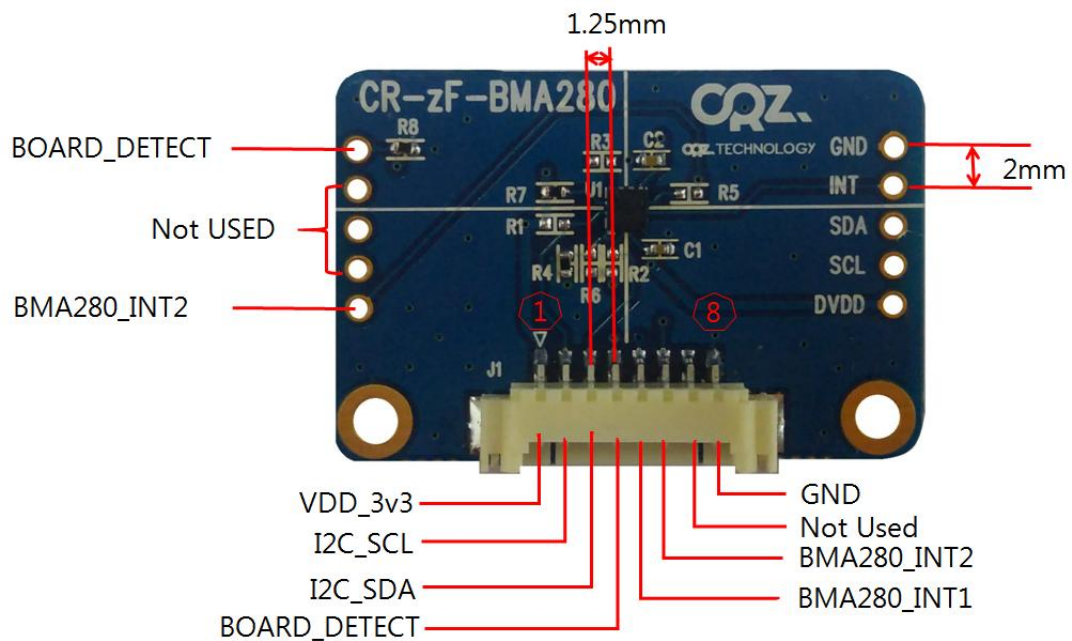


Email : help@crz-tech.com (031-701-5057)

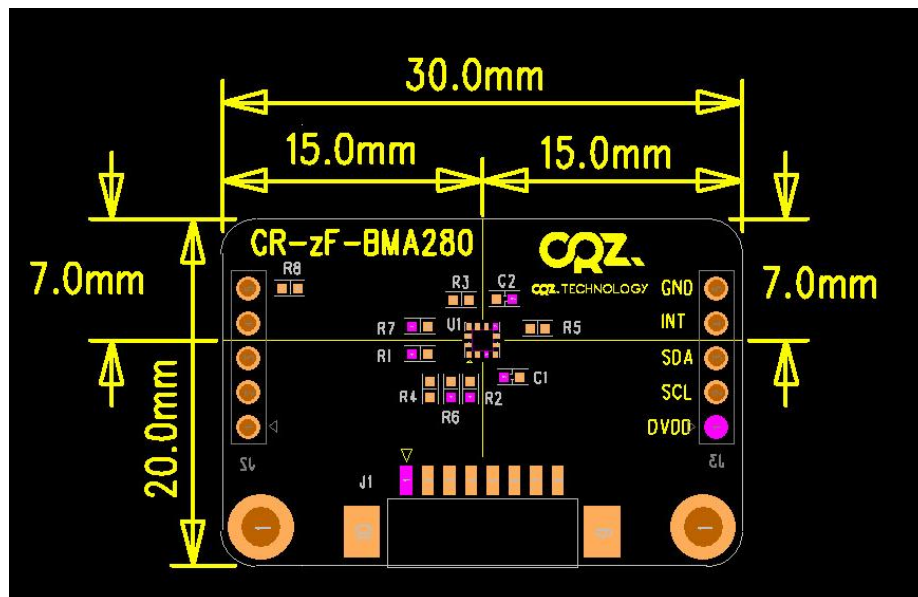
Features

- BMA280 IC
- Interface : I2C
- Supply Voltage : 2.4 ~ 3.3V (Max 3.6V)
- Dimension : 30mm(W) x 20mm(H)

부품 배치도



DIMENSION



Package Contents

- CS-ZF-BMA280 Board: 1ea
- 8P cable : 1ea

Manual and Source

- Mango-M32 Board [소스](#)
- Mango-M32F2 Board [소스](#)
- Mango-M32F4 Board [소스](#)