

CONFIDENTIAL

TECHNICAL SPECIFICATION (PROVISIONAL)	
STATIC TORQUE	12Nm \pm 2.0Nm
RELEASE VOLTAGE	24Vdc (+5%/-10% VDE 0580)
POWER (P20)	18-20W
INSULATION	CLASS H/F
LEADS	19/0.25mm ETFE-FLHTC0311-1.00 UL3557
STORAGE TEMP	-10 / 55°C
OPERATING TEMP	10 / 40°C

NOTE
BED-IN TO 14Nm

0.30
0.20 - AIRGAP
(ENERGISED)

3 RD ANGLE PROJECTION

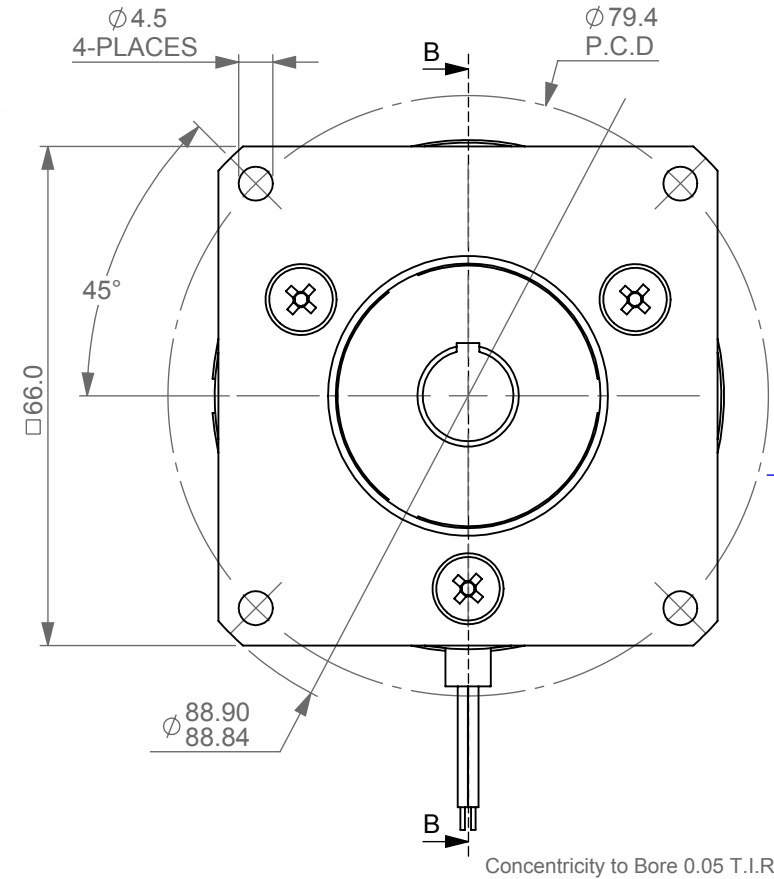
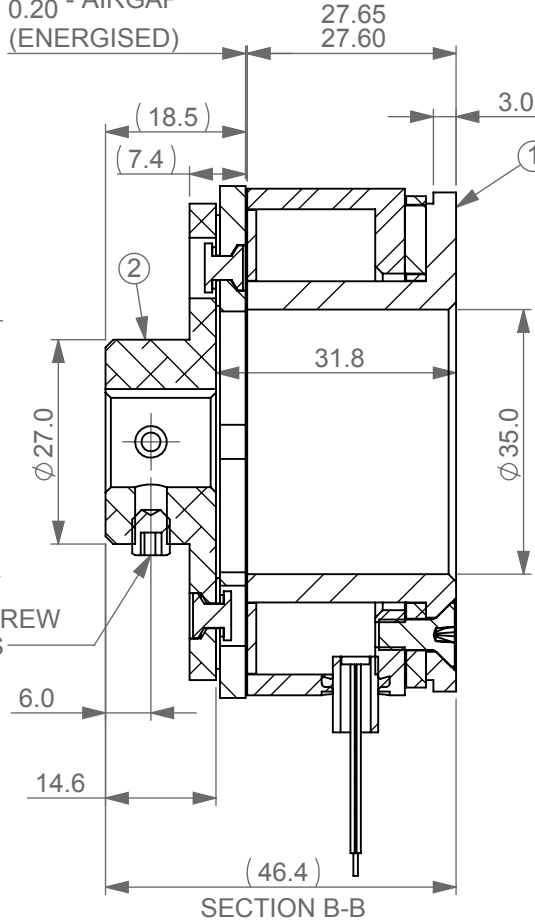
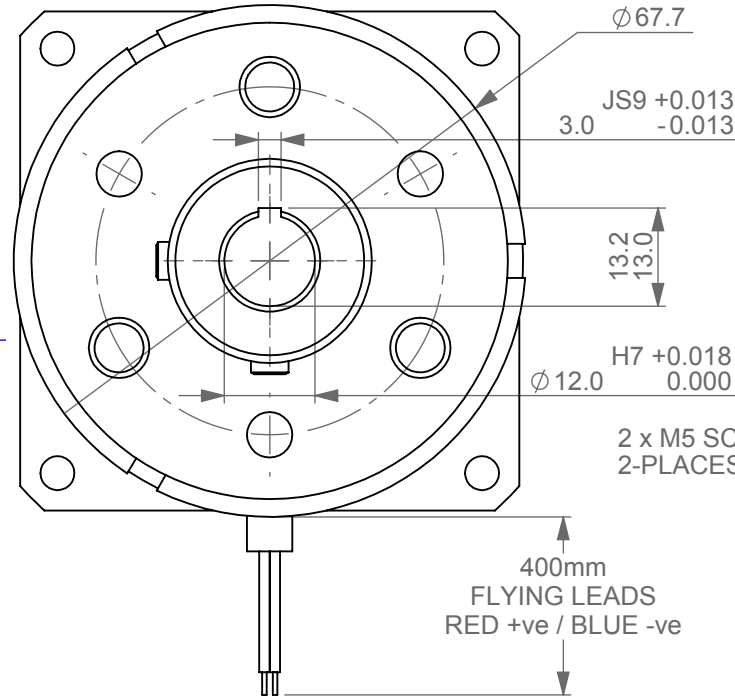
ITEM NO.	PART NUMBER	QTY
1	2-62-0692-Z721	1
2	2-53-064D-U122	1

Drawing Number

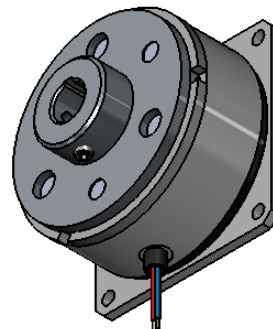
3-62-0614-Z011

Material : SEE BoM

Finish : BR Zn & CL Pass



NOTE
NON-STANDARD KEYWAY



GEOFIRE

Stephenson Gobin Ltd

20 Longfield Road · South Church Enterprise Park ·
Bishop Auckland · County Durham · DL14 6XB · UK
Tel: +44 (0)1388 770360 · Fax: +44 (0)1388 779197



www.stephensongobin.com

All Dimensions Metric
Remove all sharp edges

Tolerances unless otherwise stated \pm 0.10mm	DRAWN	DA	TITLE
	CHECKED		*SP* Sz 06-62-PM(A)-CC-12mm-24Vdc
			NOTICE: This drawing remains in design and detail our property. All Copyright Reserved.

ISSUE	DATE	CHANGE NOTE
D	25/5/16	ECN 389: CHANGED LEAD WIRE FROM 19/0.2 PTFE UL1213 TO ETFE-FLHTC0311-1.00
C	4/4/16	ECN 365: ADDED STORAGE AND OPERATING TEMPS TO DRAWING, AS REQUESTED BY TMC
A	29/10/15	ORIGINAL ISSUE - ECN:264