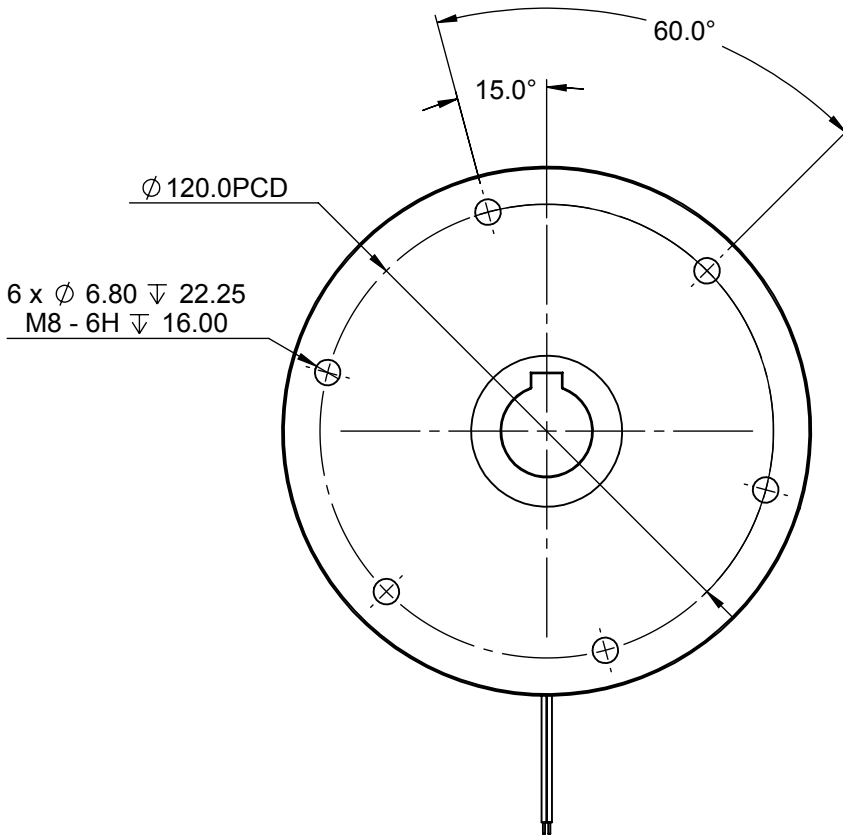
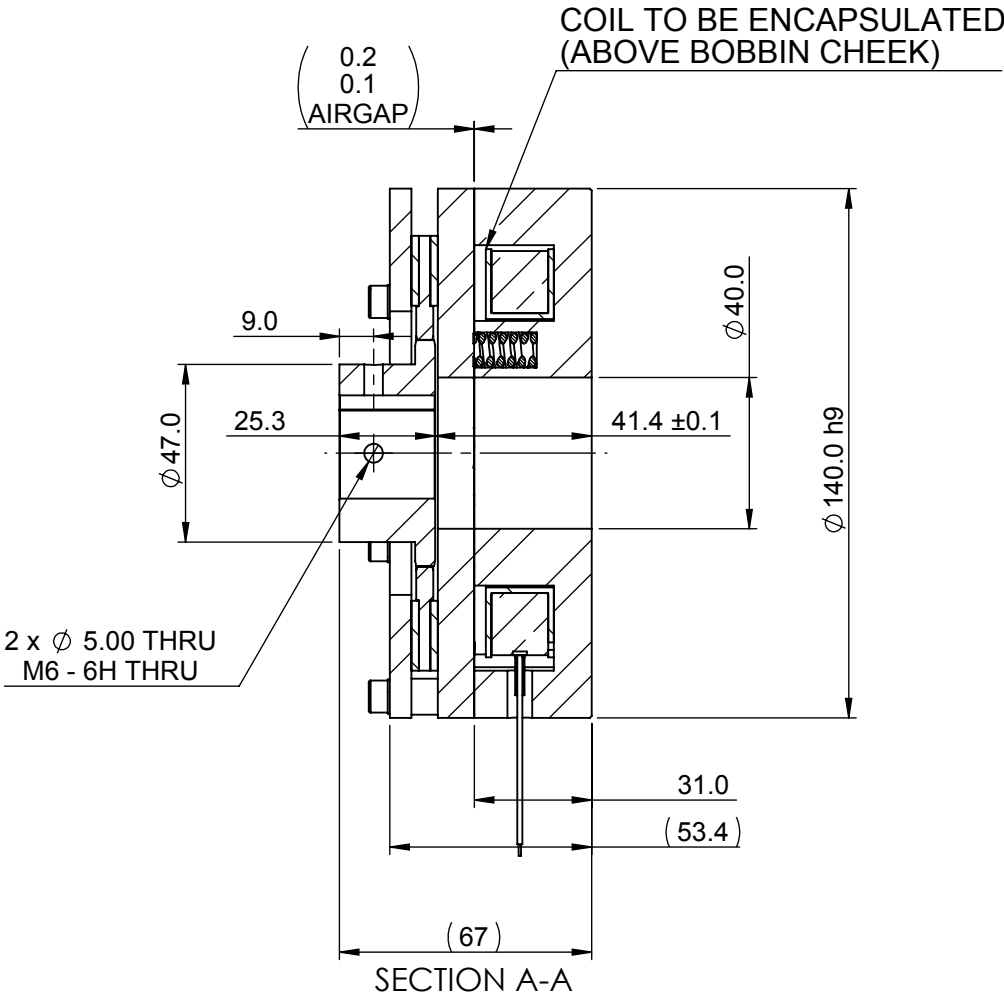
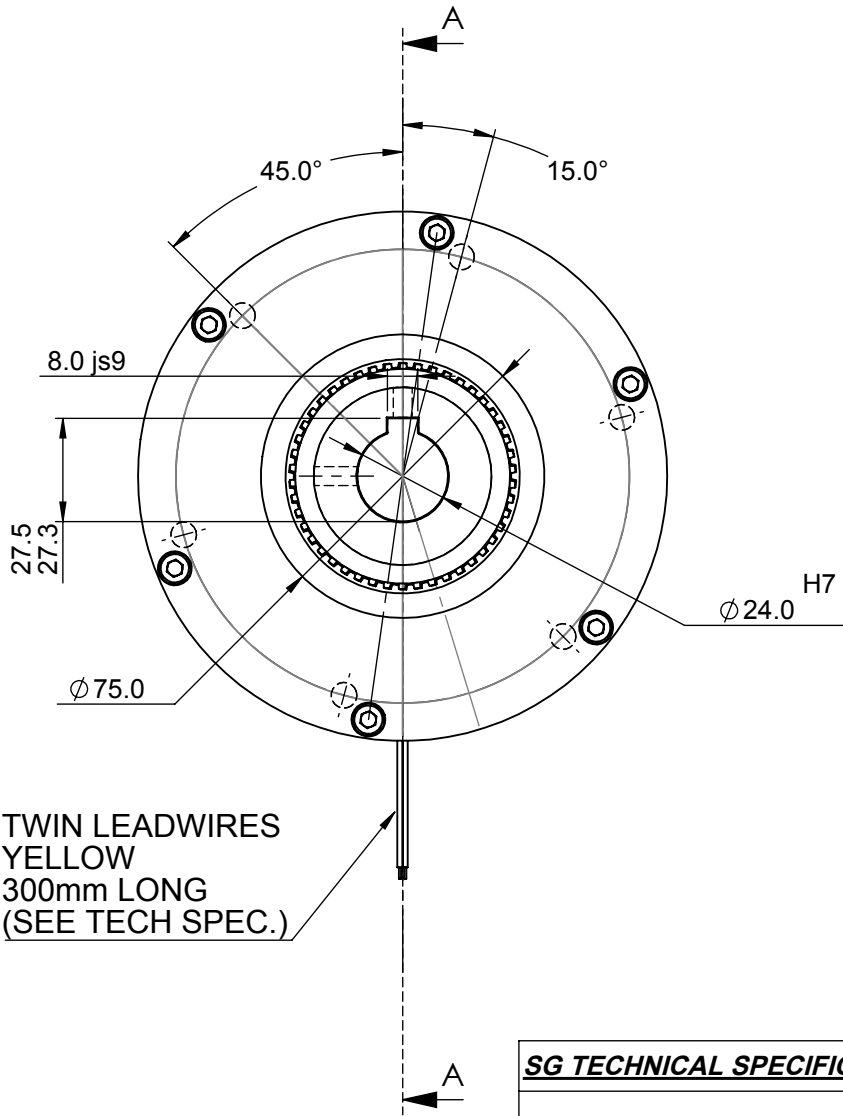


CONFIDENTIAL

3rd ANGLE PROJECTION

Drawing Number 3-56-1403

Material : SEE BoM Finish : BR. Zn & CL PASS



SG TECHNICAL SPECIFICATION (PROVISIONAL)	
STATIC TORQUE	100 Nm (Min)
Nominal Voltage	24Vdc
Release Voltage (Pull-in)	<18Vdc @ 20°
Typical Release Time / Current Rise (ms)	TBC
Re-Engage Voltage (Drop-out)	TBA @ 20° (Typically <6Vdc)
Typical Engage Time / Current Decay (ms)	TBC
Coil Power @ 20°C	circa 50W
Coil Resistance	circa 11.5 Ohms
Insulation Class	F/H
Leadwires	2 x 19/0.25 ETFE-FLHTC0311-1.00 UL3557
	O/D ~ 1.66mm
	Insulation Thickness ~ 0.165mm
Temp. Rise above Ambient	TBC
STORAGE TEMP	-10 / 55°C
OPERATING TEMP	10 / 40°C

Remove All Sharp Edges Concentricity to Bore 0.05 T.I.R.

G	26/05/16	ECN 390 : CHANGED LEAD WIRE FROM 19/0.3 PTFE UL1213 TO 19/0.25 ETFE-FLHTC0311-1.00 UL3557
F	04/04/16	ECN 365 : ADDED STORAGE AND OPERATING TEMPS TO DRAWING, AS REQUESTED BY TMC
A	30/10/15	SP. DEVELOPMENT FOR DFN 00134
ISSUE	DATE	CHANGE DETAIL

TITLE SP. Ø140mm SPRING APPLIED F/S BRAKE (100Nm)

NOTICE: This drawing remains in design and detail our property. All Copyright Reserved.

Stephenson Gobin Ltd

20 Longfield Road · South Church Enterprise Park · Bishop Auckland · County Durham · DL14 6XB · UK
Tel: +44 (0)1388 770381 · Fax: +44 (0)1388 779197

www.stephensongobin.com

All Dimensions mm unless otherwise stated

Tolerances unless otherwise stated: $\pm 0.10\text{mm}$

DRAWN	DA
CHECKED	