

# 4.2mm Pitch Wire to Board LAD 1140-N(X) Lock Angle Wafer

## Features And Specifications

### Electrical

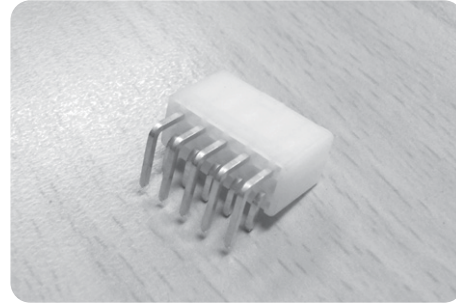
- Voltage Rating : 250VAC max
- Current Rating : 9A max
- Contact Resistance : 30m $\Omega$  max
- Insulation Resistance : 1,000M $\Omega$  min
- Dielectric Withstanding Voltage : 1000VAC for 60 seconds

### Physical

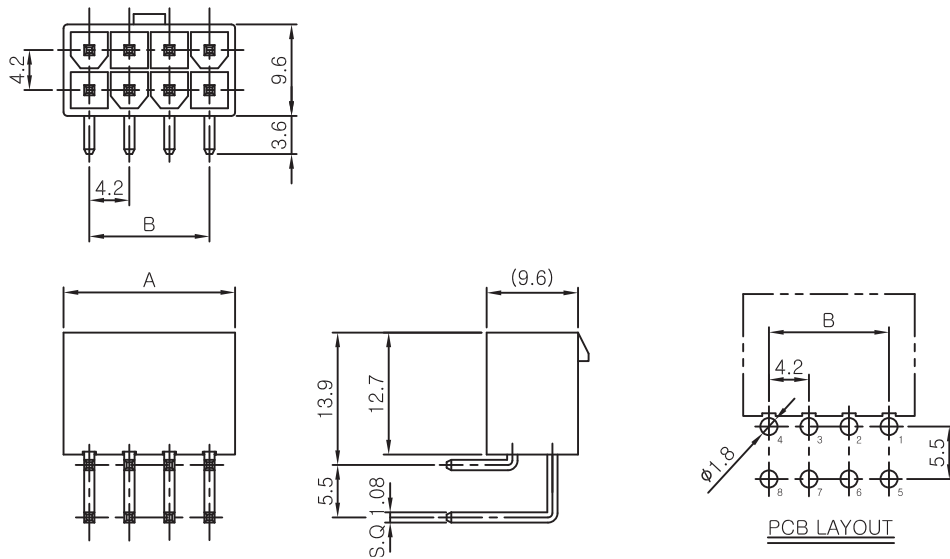
- Housing : Nylon66, UL94V Grade
- Pin : 1.08mm Square Brass Pin, Tin Plated
- Operating Temperature : -40°C ~ +105°C

### Reference Information

- Mates With : CHD1140-N Series
- Packing : Bag
- UL File No. : E92854
- Designed In : Millimeters



## Dimensions (For Reference Only)



## Ordering Information And Dimensions

CKT	MODEL NO.	A	B	CKT	MODEL NO.	A	B
2	LAD1140-02(X)	5.4	-	14	LAD1140-14(X)	30.6	25.2
4	LAD1140-04(X)	9.6	4.2	16	LAD1140-16(X)	34.8	29.4
6	LAD1140-06(X)	13.8	8.4	18	LAD1140-18(X)	39.0	33.6
8	LAD1140-08(X)	18.0	12.6	20	LAD1140-20(X)	43.2	37.8
10	LAD1140-10(X)	22.2	16.8	22	LAD1140-22(X)	47.4	42.0
12	LAD1140-12(X)	26.4	21.0	24	LAD1140-24(X)	51.6	46.2