



## **SHIELD-MD10**

### **Cytron 10A Motor Driver Shield**



## **User's Manual**

**V1.0**

**June 2015**

Information contained in this publication regarding device applications and the like is intended through suggestion only and may be superseded by updates. It is your responsibility to ensure that your application meets with your specifications. No representation or warranty is given and no liability is assumed by Cytron Technologies Incorporated with respect to the accuracy or use of such information or infringement of patents or other intellectual property rights arising from such use or otherwise. Use of Cytron Technologies's products as critical components in life support systems is not authorized except with express written approval by Cytron Technologies. No licenses are conveyed, implicitly or otherwise, under any intellectual property rights.

# Index

1.	<a href="#">Introduction</a>	3
2.	<a href="#">Packing List</a>	4
3.	<a href="#">Product Specification and Limitations</a>	5
4.	<a href="#">Board Layout</a>	6
5.	<a href="#">Dimension</a>	8
6.	<a href="#">Hardware Installation</a>	9
7.	<a href="#">Warranty</a>	11

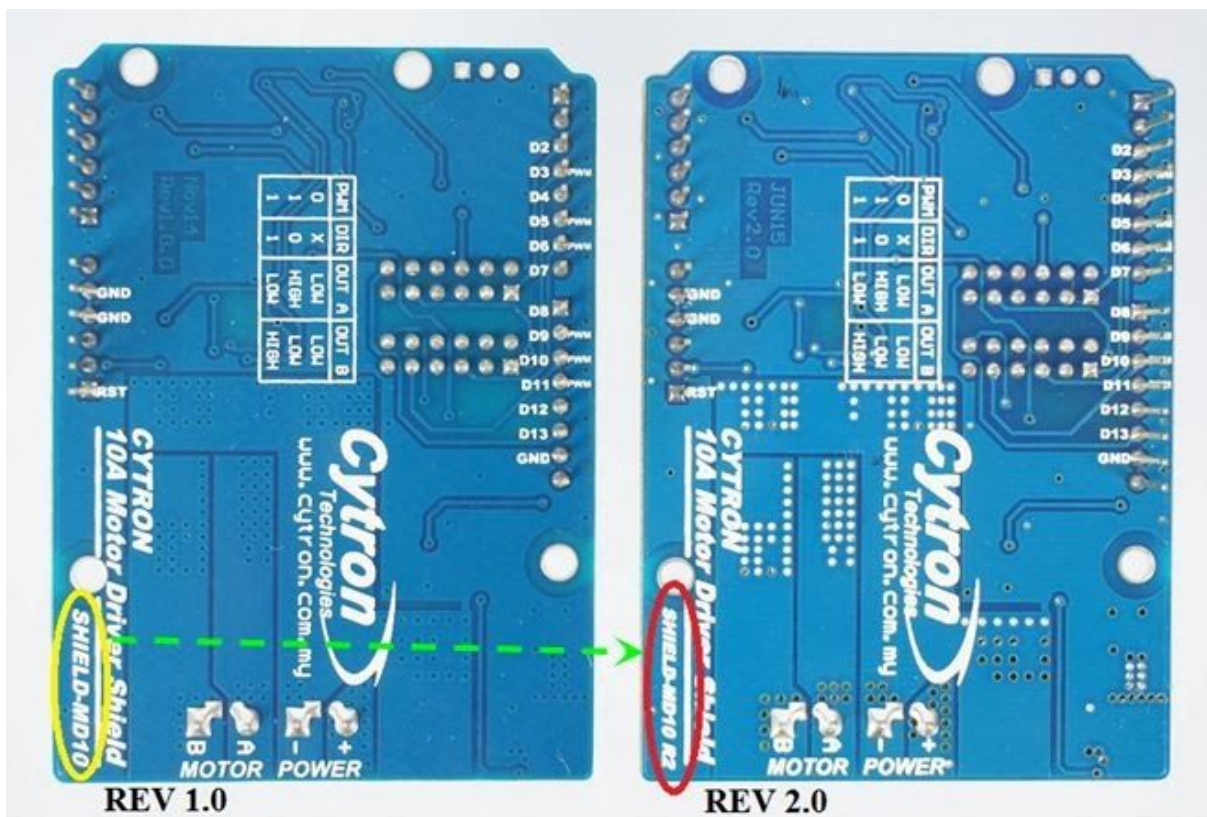
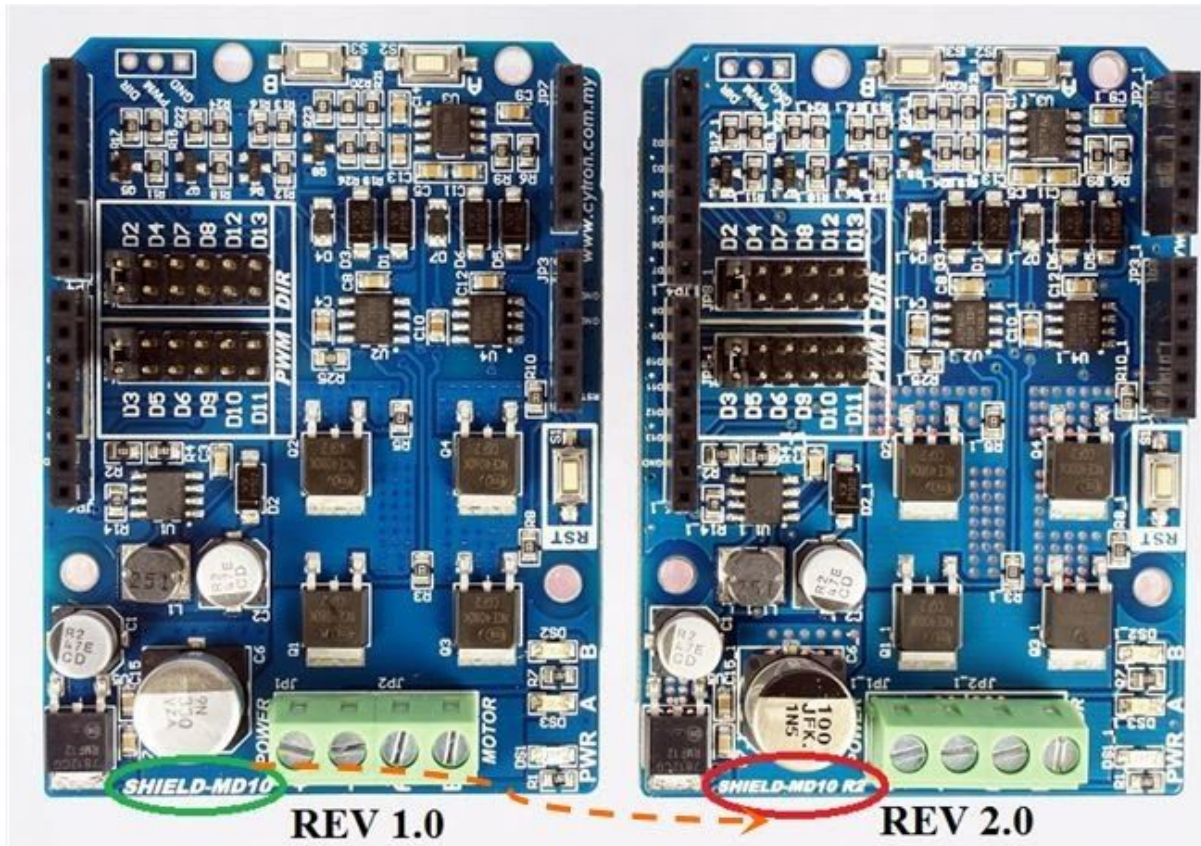
## 1.0 INTRODUCTION

SHIELD-MD10 is an Arduino shield for controlling high current brushed DC motor up to 10A continuously. It is compatible with [Arduino UNO](#), [Arduino Duemilanove](#), [Arduino Mega](#), [Arduino Leonardo](#) and possibly other pin compatible main boards. SHIELD-MD10 uses full solid state components which results in faster response time and eliminates the wear and tear of the mechanical relay. SHIELD-MD10 shield has stackable side headers which allows for more Arduino shields to be stacked on top of it.

SHIELD-MD10 Shield come with these features:

- Bi-directional control for 1 brushed DC motor.
- **New!!** Support motor voltage ranges from 7V to 30V.
- Maximum current up to 10A continuous and 15A peak (10 seconds).
- 3.3V and 5V logic level input.
- Solid state components provide faster response time and eliminate the wear and tear of mechanical relay.
- Fully NMOS H-Bridge for better efficiency and no heat sink is required.
- Speed control PWM frequency up to 10KHz.
- Stackable I/O header pin.
- Selectable digital pins for PWM and DIR.

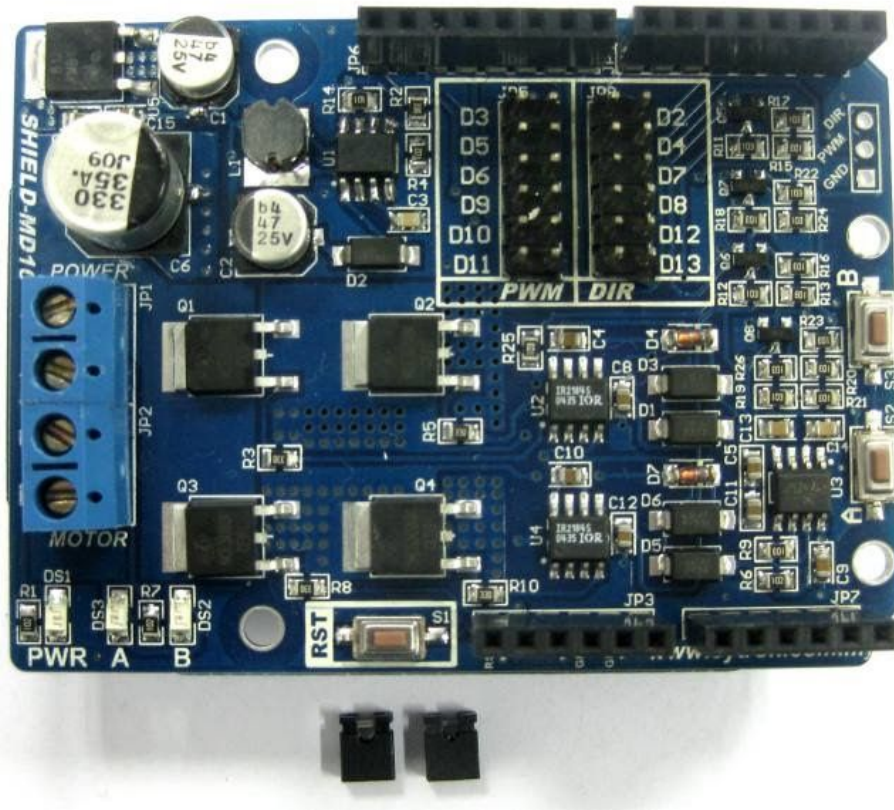
Note: Please note that there will be only Shield MD10 Rev 2.0. There is an improvement made in Shield MD10 Rev 2.0. For Shield MD10 Rev 2.0, "SHIELD-MD10 R2" is labelled at the front and back of the shield like shown in the figure.





## 2.0 PACKING LIST

Please check the parts and components according to the packing lists. If there are any parts missing, please contact us at [sales@cytron.com.my](mailto:sales@cytron.com.my) immediately.



1. 1 x [SHIELD-MD10](#) shield
2. 2 x [mini jumper](#)

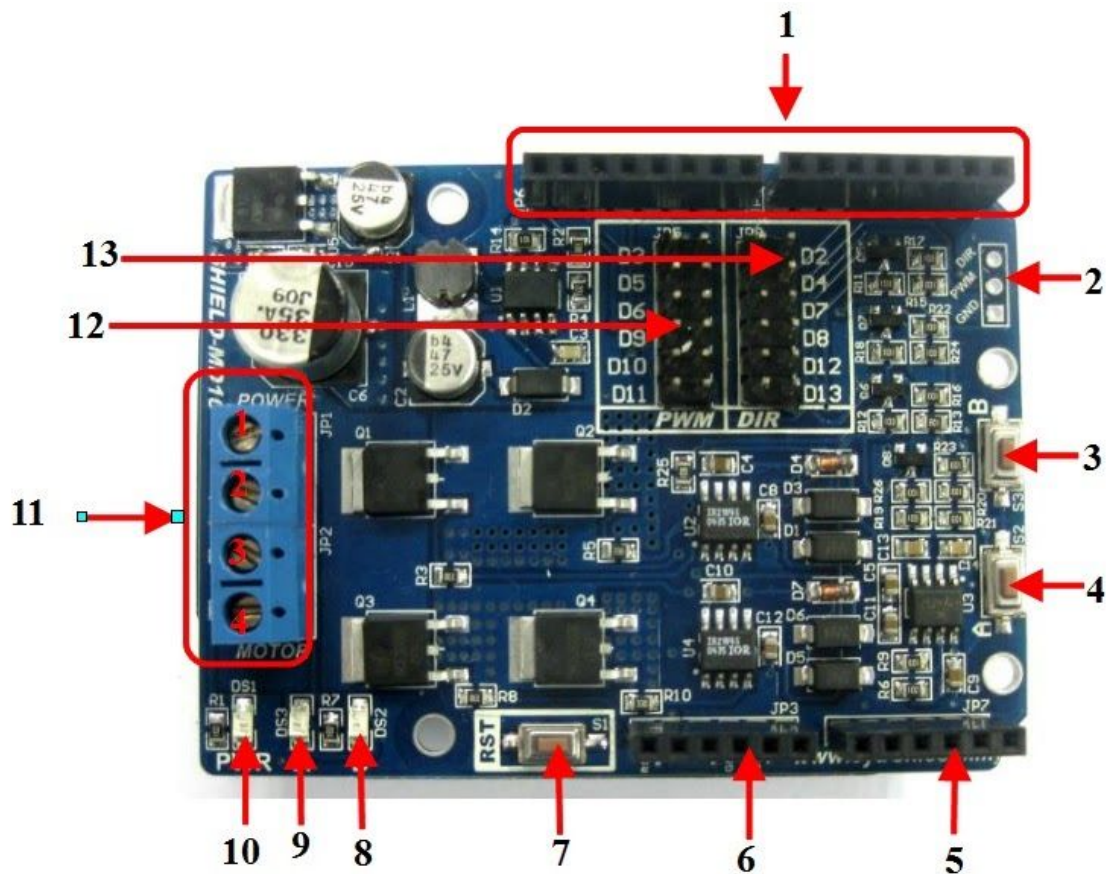
### 3.0 PRODUCT SPECIFICATION AND LIMITATIONS

#### Absolute Maximum Rating

Parameter	Min	Typical	Max	Unit
Power Input Voltage (Motor supply voltage)	7	-	25	V
I <sub>MAX</sub> (Maximum Continuous Motor Current)	-	-	10	A
I <sub>PEAK</sub> (Peak Motor Current)*	-	-	15	A
V <sub>IOH</sub> (Logic Input-High Level)	3	-	5.5	V
V <sub>IOL</sub> (Logic Input - Low Level)	0	0	0.5	V
Maximum PWM Frequency	-	-	10	KHz

***\*Must not exceed 10 seconds***

## 4.0 BOARD LAYOUT



- 1. Stackable Digital I/O Headers**  
JP4 and JP6 are Digital I/O pins stacked to the Arduino main board.
- 2. Optional External Control**  
External control is for the use of other types of microcontroller besides Arduino.
- 3. Test Button B**  
When this button is pressed, current flows from output B to A and motor will turn CCW (or CW depending on the connection).
- 4. Test Button A**  
When this button is pressed, current flows from output A to B and motor will turn CW (or CCW depending on the connection).
- 5. Stackable Analog Input Header**  
This is the analog port of the Arduino and is not used by SHIELD-MD10. The stackable header allows other stacked shield to utilize these pins.
- 6. Stackable Power Pins Header**  
This is the power port of the Arduino. Only RST and GND pins are connected to the SHIELD-MD10. The stackable header allows other stacked shield to utilize these pins.

**7. Reset Button**

Reset button is for the convenience of user to reset the Arduino main board.

**8. Red LED B**

Turns ON when the output A is low and output B is high. Indicates the current flows from output B to A.

**9. Red LED A.**

Turns ON when the output B is low and output A is high. Indicates the current flows from output A to B.

**10. Green Power LED**

Turn on when the SHIELD-MD10 is powered up.

**11. Terminal Block**

Connect to motor and power source.

Pin No.	Pin Name	Description
1	POWER +	Positive supply
2	POWER -	Negative supply
3	Motor Output A	Connect to motor terminal A
4	Motor Output B	Connect to motor terminal B

**12. PWM Pin Selector**

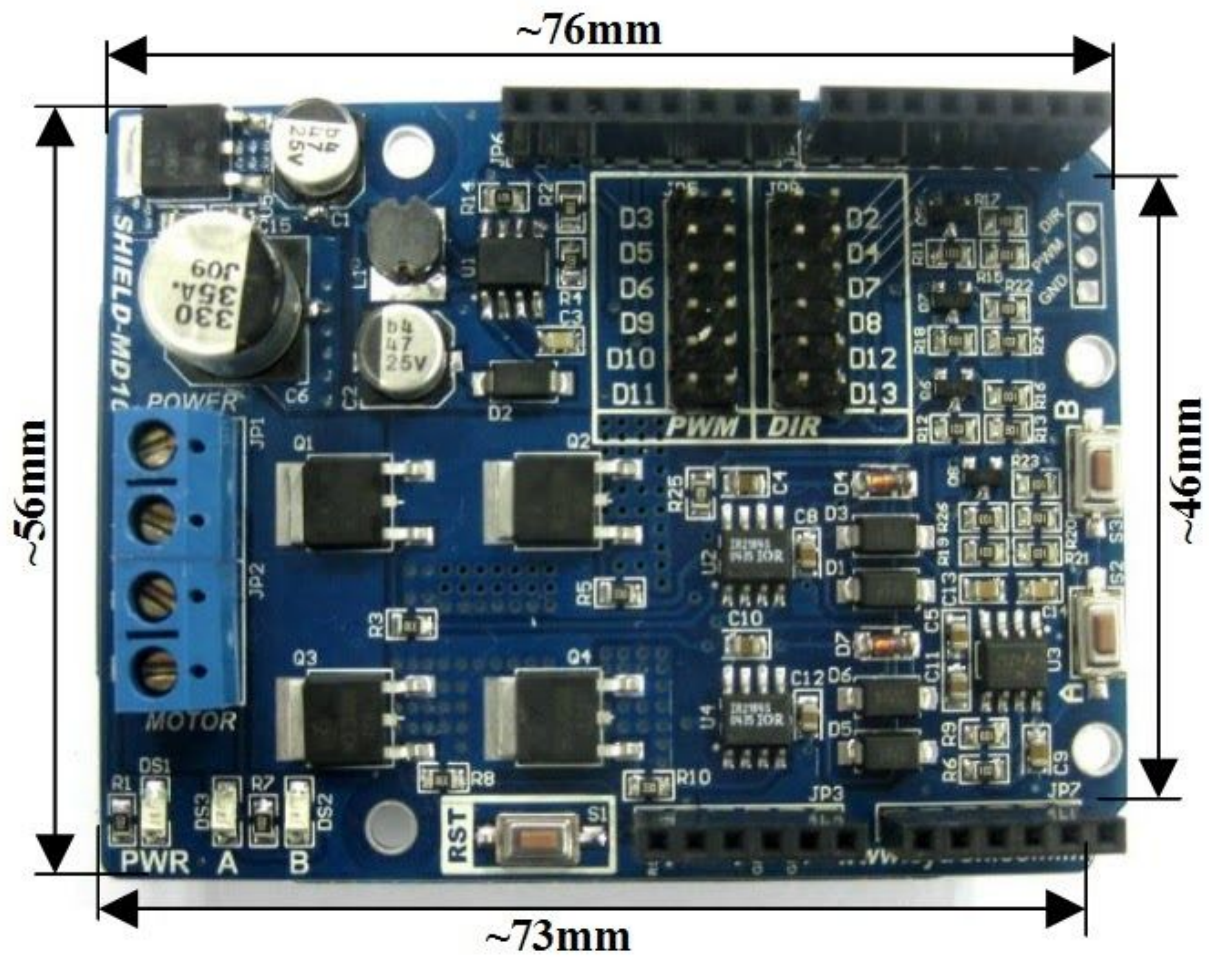
User may select D3, D5, D6, D9, D10 or D11 as the PWM pin for SHIELD-MD10 with the mini jumper.

**13. DIR Pin Selector**

User may select D2, D4, D7, D8, D12 or D13 as the direction pin for SHIELD-MD10 with the mini jumper.



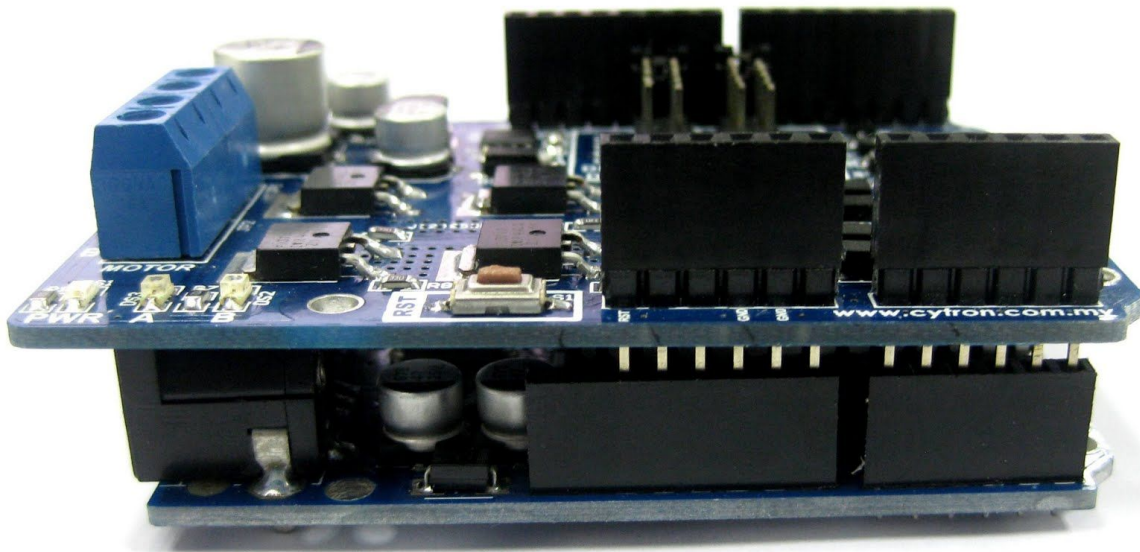
## 5.0 DIMENSION



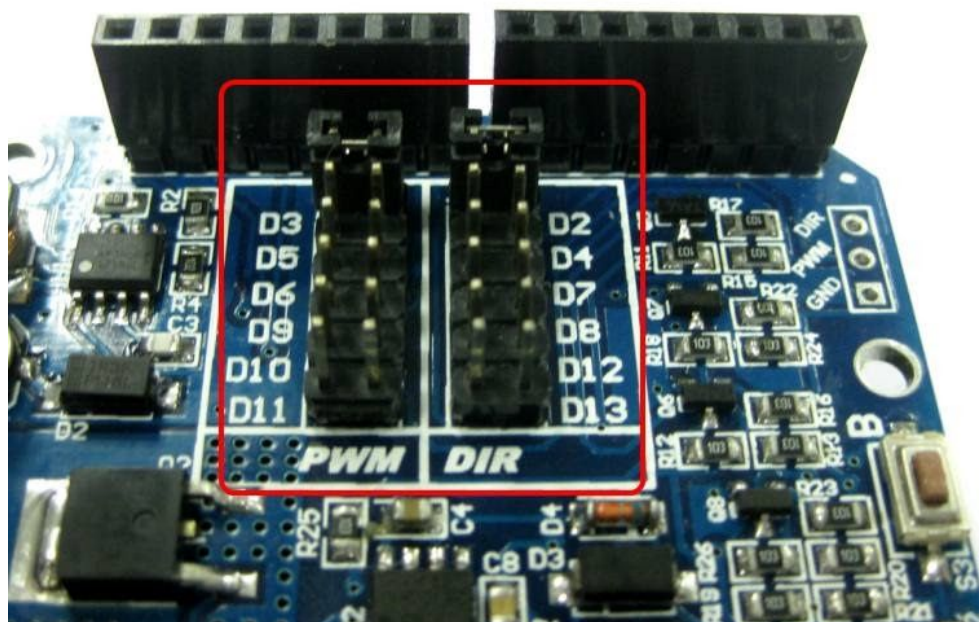
## 6.0 HARDWARE INSTALLATION

This section shows the example of using SHIELD-MD10 with Arduino UNO as the main controller to control a brush motor. However, other Arduino main board such as Arduino Duemilanove and Arduino Mega can also be used.

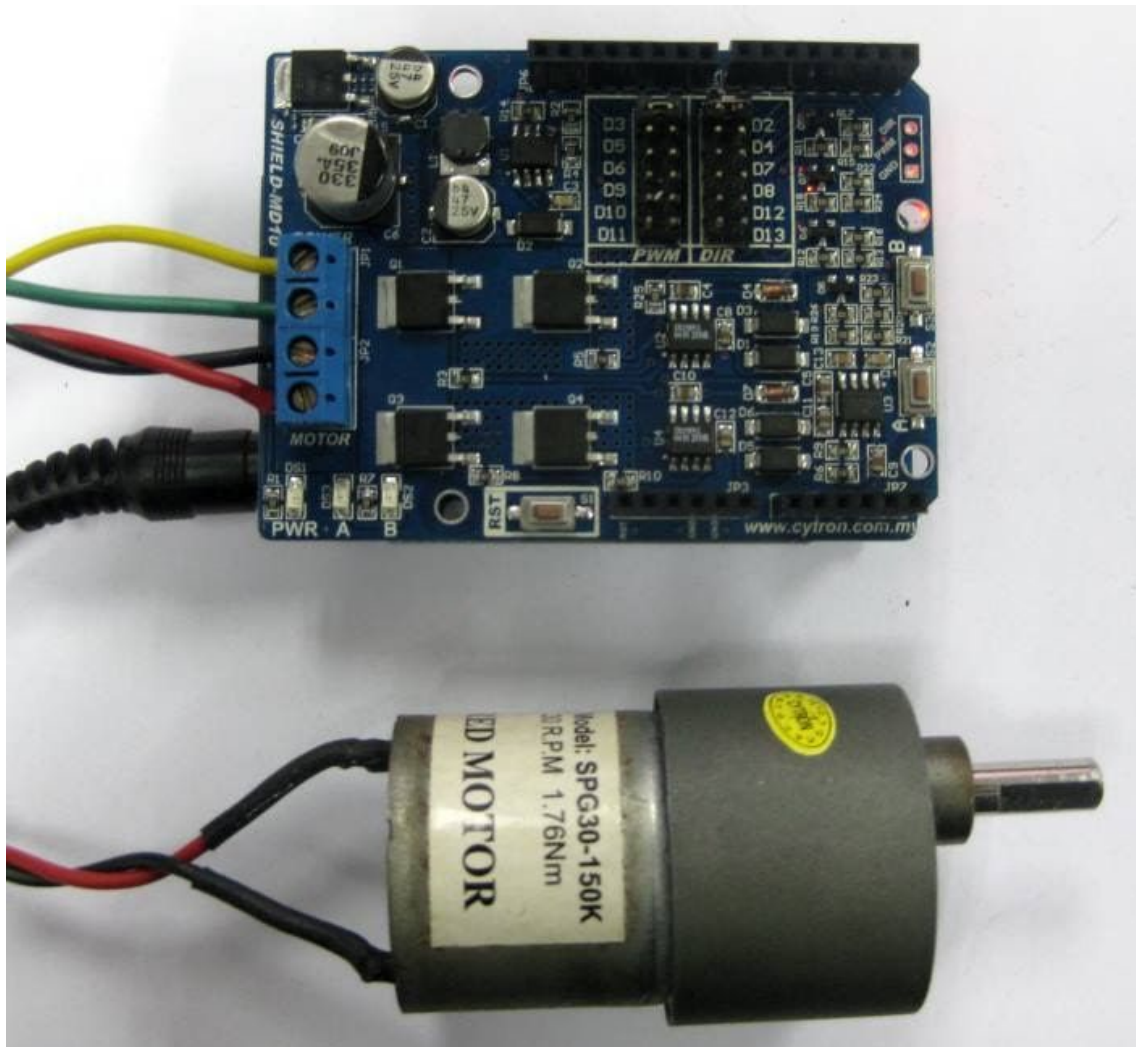
Figure below shows that the SHIELD-MD10 is stacked on the Arduino UNO. Please ensure that the pins alignment is correct.



Select the pins for PWM and DIR. The default PWM pin is set to D3 while the DIR pin is set to D2. However, other pins may be selected if these pins are already used by other application. Remember to initialize the correct Arduino's digital pin accordingly in the user sketch/program.



Connect the brush motor and motor power to the terminal block on SHIELD-MD10 as shown. Don't forget about the power source for the Arduino main board too.



Power up the Arduino main board and load the sketch/program first before powering up the SHIELD-MD10 motor driver shield.

[Example source code](#) can be downloaded from the SHIELD-MD10 product page at Cytron website.

## 7.0 WARRANTY

- Product warranty is valid for 12 months.
- Warranty only applies to manufacturing defect.
- Damaged caused by misuse is not covered under warranty
- Warranty does not cover freight cost for both ways.

*Prepared by*  
***Cytron Technologies Sdn. Bhd.***  
No. 16, Jalan Industri Ringan Permatang Tinggi 2,  
Kawasan Industri Ringan Permatang Tinggi,  
14100 Simpang Ampat,  
Penang, Malaysia.

*Tel:* +604-504 1878

*Fax:* +604-504 0138

*URL:* [www.cytron.com.my](http://www.cytron.com.my)

*Email:* [support@cytron.com.my](mailto:support@cytron.com.my)  
[sales@cytron.com.my](mailto:sales@cytron.com.my)