



Surface Mounted Chip LED

Model No. : LS-SP172USO14

■ Features :

- Compatible with automatic placement equipment
- Compatible with reflow solder process

■ Applications :

- Automotive_Telecommunication
- Indicators
- LCD Back-lights
- Illuminations

Dice Material	Light Color	Lens Color
AlGaInP	Ultra High Amber	Water Clear

Absolute Maximum Ratings

(Ta=25°C)

Item	Symbol	Maximum	Unit
Power Dissipation	P _D	78	mW
Continuous Forward Current	I _F	30	mA
Peak Forward Current (1/10 Duty Cycle 0.1ms Pulse Width)	I _{FP}	100	mA
Reverse Voltage	V _R	5	V
Derating Linear From 25°C		0.4	mA/°C
Operating Temperature Range	T _{opr}	-30 to +80	°C
Storage Temperature Range	T _{stg}	-40 to +85	°C

Electrical / Optical Characteristics

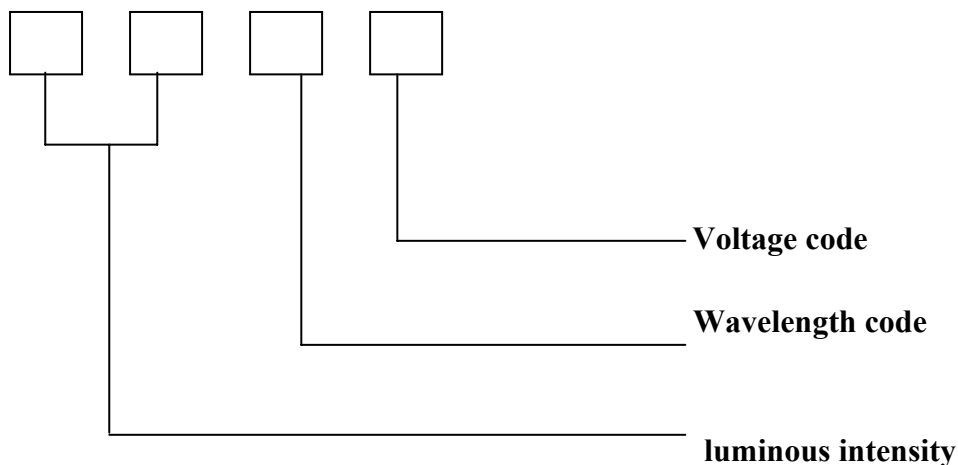
(Ta=25°C)

Item	Symbol	Condition	Min.	Typ.	Max.	Unit
Forward Voltage	V _F	IF=20mA		2.0	2.6	V
Reverse Current	I _R	VR=5V			10	uA
Peak Emission Wavelength	λ _P	IF=20mA		610		nm
Dominant Wavelength	λ _D	IF=20mA		605		nm
Viewing Angle	2 θ 1/2	IF=20mA		130		Deg
Luminous Intensity	I _V	IF=20mA	57	90		mcd

ISSUE	DIMENSION NO :	VERSION :	DATE :
		A	2010/05/13
	APPROVAL :	CHECK :	EDIT :

◆ Packing coding principle

Notice: Bin code: luminous intensity / wavelength / voltage.



◆ The Luminous Intensity Grade of Ultra High Amber Chip-LED Products

● Test Condition : @ 20mA

Range,mcd	Bin code
57/72	J2
72/90	K1
90/115	K2

◆ Dominant Wavelength Grade of Ultra High Amber Chip-LED Products

● I type @ 20mA

BIN	Range
1	600/602
2	602/604
3	604/606
4	606/608

◆ Forward Voltage Grade of Ultra High Amber Chip-LED Products

● I type @ 20mA

BIN	Range	BIN	Range
5	1.9/2.0	6	2.0/2.1



◆ Descriptions :

- The Chip-LED Taping is much smaller than lead frame type components, thus enable smaller board size, higher packing density, reduced storage space and finally smaller equipment to be obtained.
- Besides, lightweight makes them ideal for miniature application, etc.

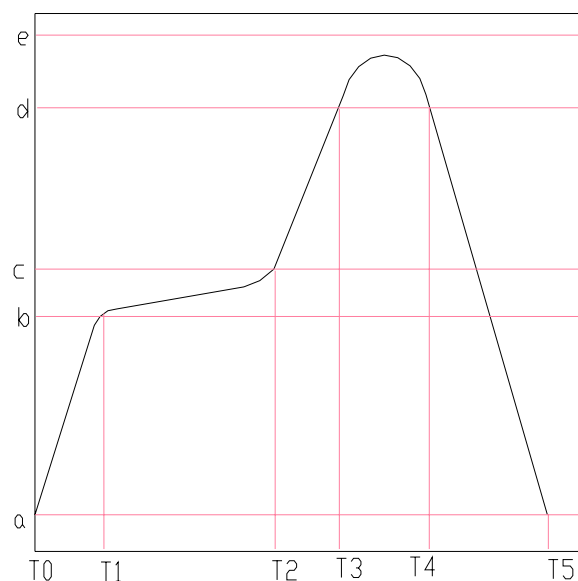
◆ Reliability Test Items And Conditions :

NO.	Item	Test Conditions	Test Hours / Cycle	Sample Q'ty	Ac / Re
1	Solder Heat	TEMP : 260°C±5°C	5 sec	36 pcs	0 / 1
2	Temperature Cycle	H : +100°C 30min. ∫ 5min. L : -40°C 30min.	50 cycle	36 pcs	0 / 1
3	Thermal Shock	H : +100°C 5min. ∫ 10sec L : -40°C 5min.	50 cycle	36 pcs	0 / 1
4	High Temperature Storage	TEMP : 100°C	1000 hrs	36 pcs	0 / 1
5	Low Temperature Storage	TEMP : -40°C	1000 hrs	36 pcs	0 / 1
6	DC Operating Life	I _F = 20mA	1000 hrs	36 pcs	0 / 1
7	High Temperature / High Humidity	85°C / 90~95%R.H.	1000 hrs	36 pcs	0 / 1

◆ Reflow Temp. / Time : :

Please refer to the following figure :

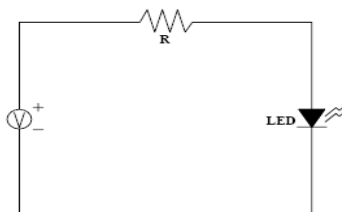
Temp.(°C)		Time(Sec)	
a	25	T0~T1	Max. 3°C/sec
b	150	T1~T2	90~130 sec
c	200	T2~T3	Max. 3°C/sec
d	220	T3~T4	Max. 30~50 sec
e	250		
		T4~T5	Max. -3°C/sec
Blet Speed		70~90 cm/min	



Precautions For Use :

● Over – current – proof

Customer must apply resistors for protection, otherwise slight voltage shift will cause big current change (Burn out will happen)



● Storage

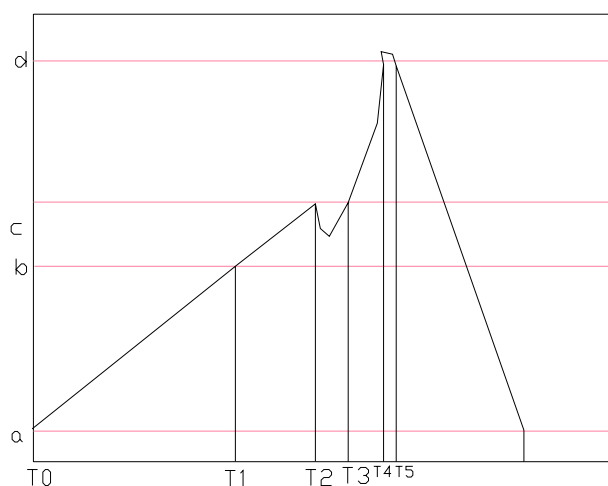
1. The operation of temperature and R.H. are : $5^{\circ}\text{C} \sim 30^{\circ}\text{C}$, R.H.60% Max..
2. Once the package is opened, the products should be used within 72 hrs. Otherwise, they should be kept in a dampproof box with desiccating regent. Considering the tape life, we suggest our customers to use our products within 1 year (from production date) .
3. It's recommended to bake before soldering when the package is unsealed after 72 hrs. The condition is : $80^{\circ}\text{C} \pm 5^{\circ}\text{C}$ for 24hrs.

◆ Soldering Iron :

- Temperature at tip of iron : 300°C Max. (25W Max.)
- Soldering time : $5 \pm 1\text{sec}$.

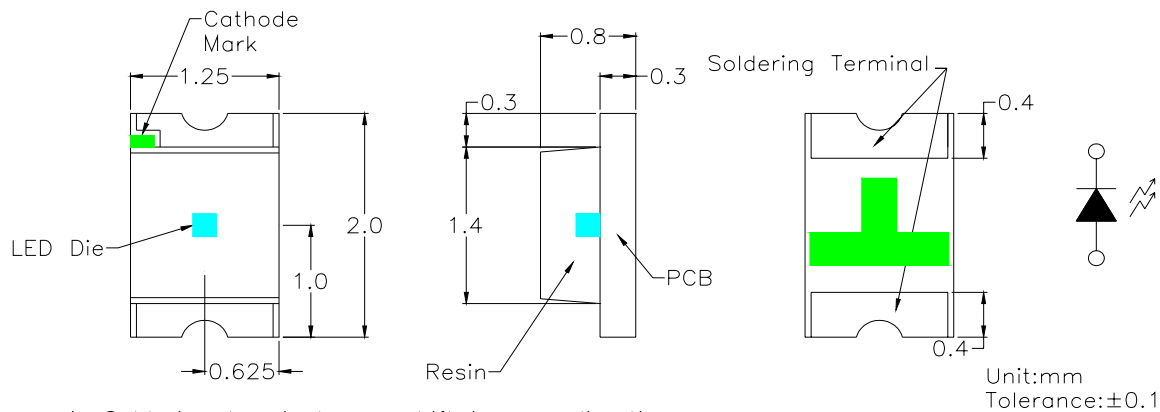
◆ Wave Soldering Temp. / Time :

Temp.($^{\circ}\text{C}$)		Time(Sec)	
a	25	T1~T2	60 ± 20
b	130 ± 10	T2~T3	
c	185	T3~T6	
d	250 ± 3	T4~T5	3 ± 2

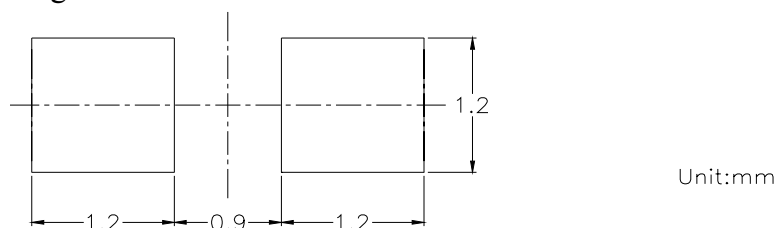




◆ Package Dimensions of Device (LS-SP172 Series)

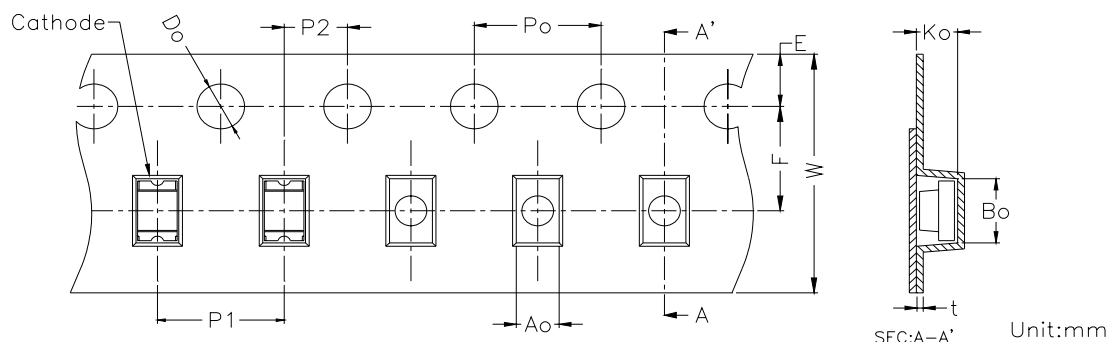


◆ Recommended Soldering Pad Dimensions

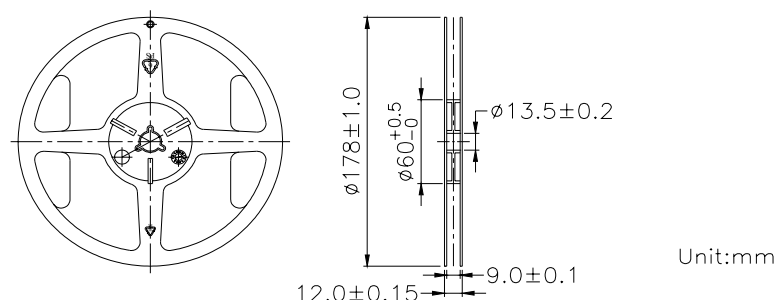


◆ Tape Specification : 4000pcs Per Reel

Packing Size													
Item	W	P1	E	F	Do	D1	Po	10Po	P2	Ao	Bo	Ko	t
Spec.	8.00	4.00	1.75	3.50	1.50	1.00	4.00	40.00	2.00	1.45	2.25	1.10	0.23
Tolerance	±0.20	±0.10	±0.10	±0.05	$\begin{smallmatrix} +0.10 \\ -0.00 \end{smallmatrix}$	±0.05	±0.05	±0.20	±0.05	±0.10	±0.10	±0.10	±0.05

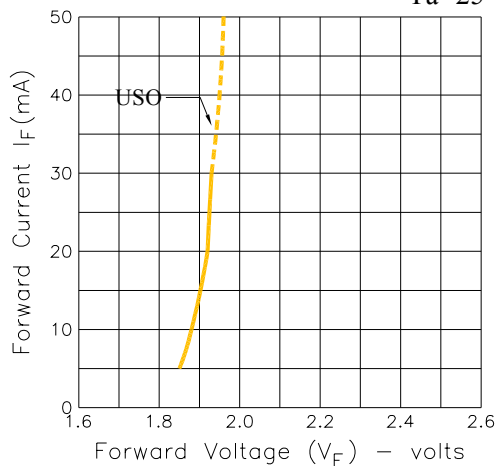


◆ Package Dimensions of Reel



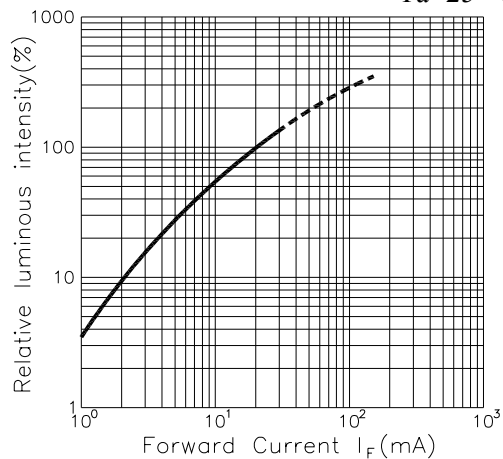
Forward Current Vs. Forward Voltage

Ta=25° C

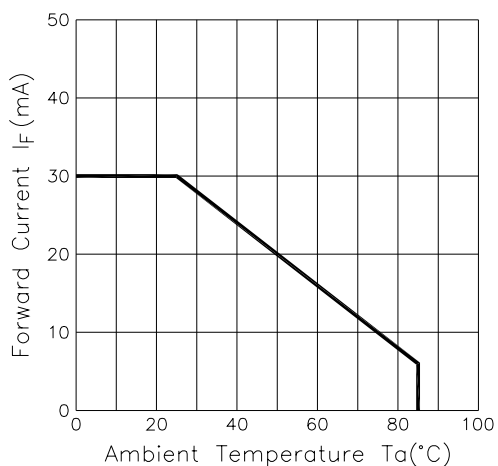


Luminous Intensity Vs. Forward Current

Ta=25° C

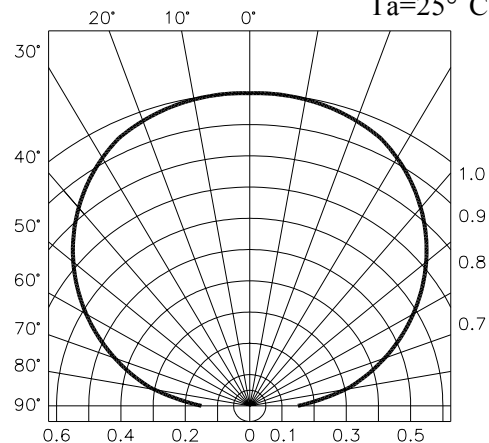


Forward Current Derating Curve

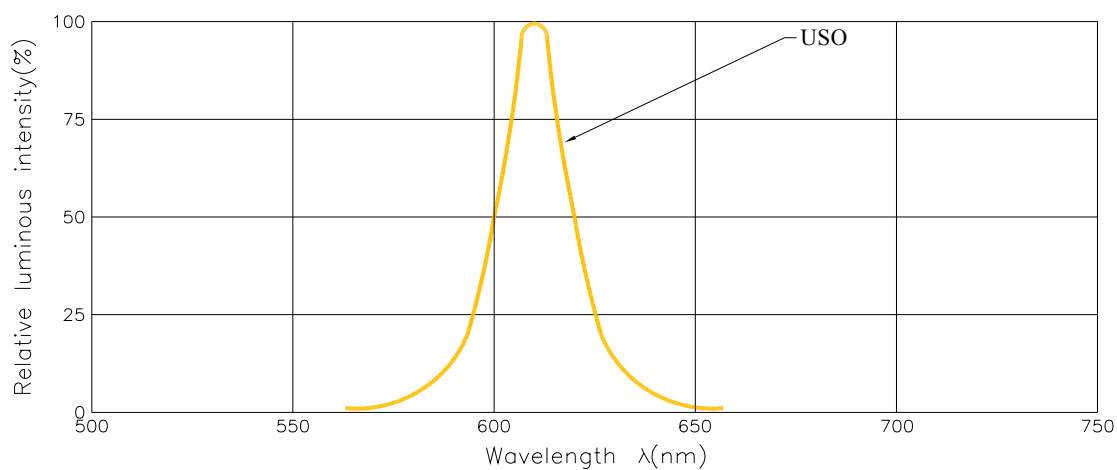


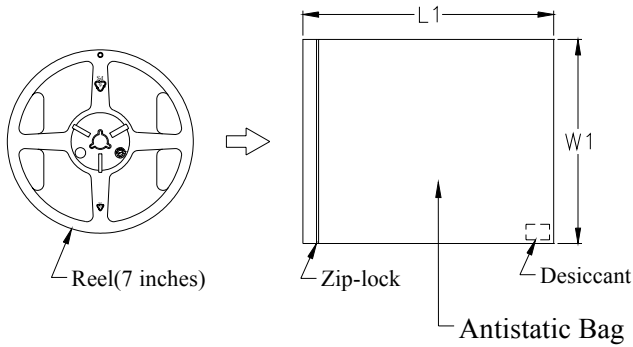
Radiation Diagram

Ta=25° C



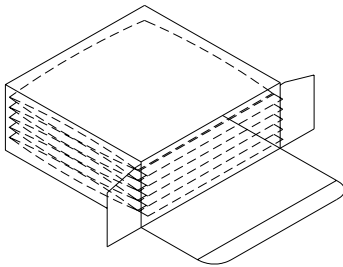
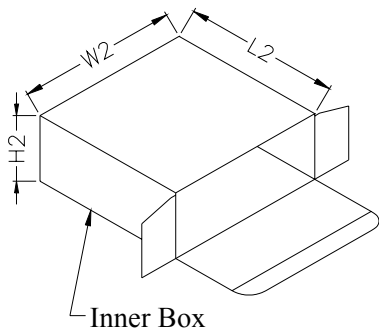
Spectrum Distribution





Dimension	L1	W1
Spec.	203.0	198.0

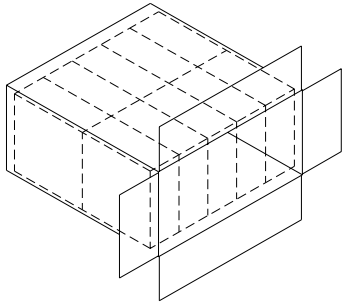
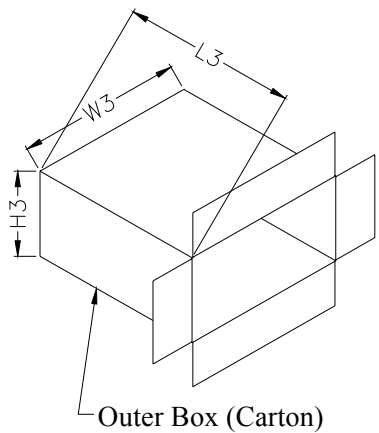
Unit : mm



5 Reels per Box

Dimension	L2	W2	H2
Outside	200.0	205.0	85.0
Inside	193.7	198.7	78.7

Unit : mm



10 Boxes per Carton

Dimension	L3	W3	H3
Outside	448.0	424.0	220.0
Inside	433.4	409.4	205.4

Unit : mm