

# SPECIFICATION FOR APPROVAL

MESSRS : SUHKWANG

Description	Item
SMD INDUCTOR	SC1054D_Series

DATE : 2006. 03. 16.



株式  
會社

## 光 星 電 子



### HEAD OFFICE

KWANG SUNG ELECTRONICS CO.,LTD.

108, 4 - KA, WONHYO - RO, YONGSAN - KU, SEOUL, KOREA

TEL : 82 - 2 - 713 - 6001

FAX : 82 - 2 - 712 - 0001

82 - 2 - 711 - 2001

### R&D CENTER

KWANG SUNG ELECTRONICS H/K CO.,LTD. KOREA BRANCH

201, WORLD VENTURE TOWN 60 - 24, GASAN - DONG

GEUMCHUN - GU, SEOUL, KOREA

TEL : 82 - 2 - 2108 - 3590, 3595

FAX : 82 - 2 - 2108 - 3535

### HONG KONG OFFICE

KWANG SUNG ELECTRONICS H.K CO.,LTD.

UNIT7 - 9, 13/F, WAH WAI IND. CENTRE, 38 - 40

AU PUI WAN ST., FO TAN, N.T., HONG KONG

TEL : 852 - 2602 - 6609

FAX : 852 - 2602 - 6490

### CHINA FACTORY

SHEN ZHEN KWANG SUNG ELECTRONICS CO.,LTD.

SHITOUZHAN INDUSTRIAL ZONE, ZHUAN CHANG

VILLAGE, SHIYAN TOWN BAOAN DISTRICT,

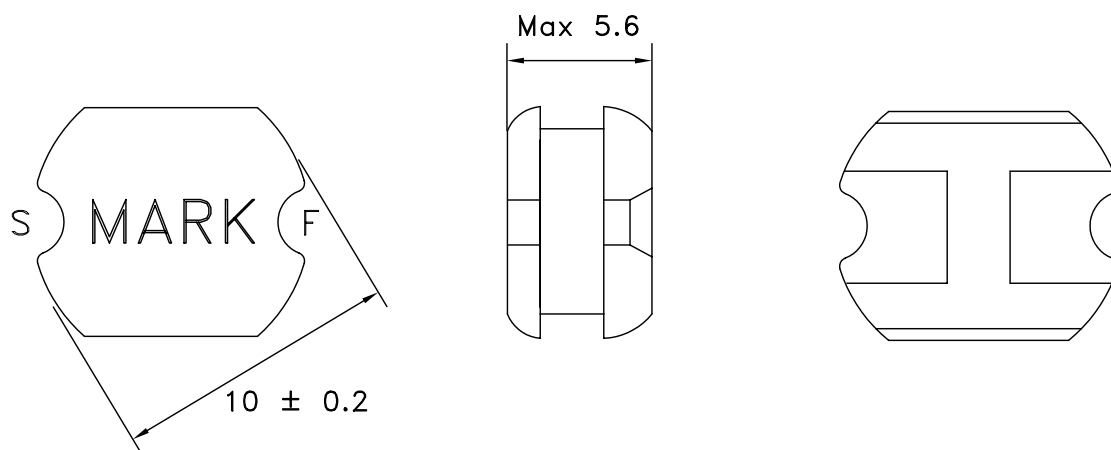
SHENZHEN GUANG DONG PROVINCE, CHINA

TEL : 86 - 755 - 2765 - 4650

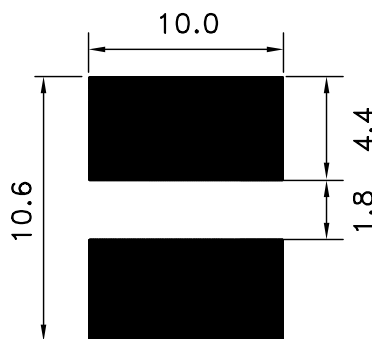
FAX : 86 - 755 - 2765 - 6007

MESSRS.: SUHKWANG	SMD INDUCTOR SPECIFICATION	DATE: 2006. 03. 16.
TYPE: SC1054D Series		

1. ITEM : SMD CHOKE COIL (SC1054D Series)
2. DIMENSION (UNIT : mm)



(SOLDER LAND PATTERN)



### 3. ORDERING CODE

SC1054D - 220 K

\_\_\_\_\_  
 \_\_\_\_\_  
 \_\_\_\_\_

Tolerance  
 Inductance (220 = 22uH)  
 Series Name

	DESCRIPTION	DRAWN	DESIGNED	CHECKED	APPROVED
				技術 06. 03. 16 權恩洙	技術 06. 03. 16 張東俊

KWANG SUNG ELECTRONICS CO.,LTD.

MESSRS.: SUHKWANG

## SPECIFICATION

DATE: 2006. 03. 16.

TYPE: SC1054D Series

## 4. MATERIALS

NO	PARTS	MATERIAL
1	CORE	DR 10 x 5.4 or Equiv.
2	WIRE	POLYURETHANE ENAMELLED COPPER

## 5. ELECTRICAL CHARACTERISTICS

Part number.	Inductance L( $\mu$ H)	Tolerance (%)	DC.R( $\Omega$ ) Max	Rated Current (A)
SC1054D-100K	10	$\pm 10\%$	0.053	2.4
SC1054D-120K	12	$\pm 10\%$	0.061	2.2
SC1054D-150K	15	$\pm 10\%$	0.07	1.9
SC1054D-180K	18	$\pm 10\%$	0.081	1.8
SC1054D-220K	22	$\pm 10\%$	0.088	1.6
SC1054D-270K	27	$\pm 10\%$	0.1	1.5
SC1054D-330K	33	$\pm 10\%$	0.12	1.3
SC1054D-390K	39	$\pm 10\%$	0.151	1.2
SC1054D-470K	47	$\pm 10\%$	0.17	1.1
SC1054D-560K	56	$\pm 10\%$	0.199	1.0
SC1054D-680K	68	$\pm 10\%$	0.223	0.91
SC1054D-820K	82	$\pm 10\%$	0.252	0.85
SC1054D-101K	100	$\pm 10\%$	0.344	0.74
SC1054D-121K	120	$\pm 10\%$	0.396	0.69
SC1054D-151K	150	$\pm 10\%$	0.544	0.61
SC1054D-181K	180	$\pm 10\%$	0.621	0.56
SC1054D-221K	220	$\pm 10\%$	0.721	0.53
SC1054D-271K	270	$\pm 10\%$	0.949	0.45
SC1054D-331K	330	$\pm 10\%$	1.1	0.42
SC1054D-391K	390	$\pm 10\%$	1.245	0.38
SC1054D-471K	470	$\pm 10\%$	1.526	0.35
SC1054D-561K	560	$\pm 10\%$	1.904	0.32
SC1054D-681K	680	$\pm 10\%$	1.904	0.32
SC1054D-821K	820	$\pm 10\%$	1.904	0.32

\* Measuring Freq. : 1 KHz

\* Maximum rated DC current is that which causes a 20% inductance reduction or temperature rising  $\Delta t = 40^\circ\text{C}$  from the initial value.