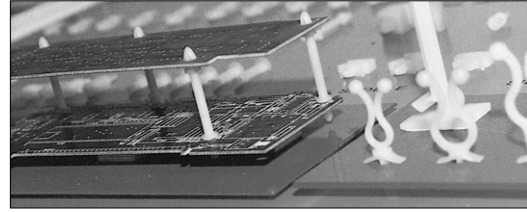
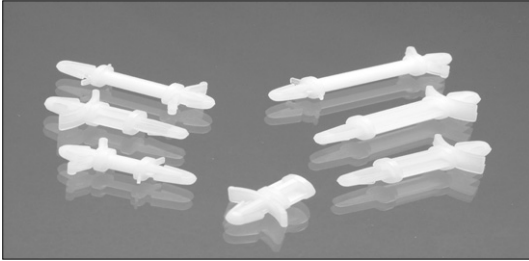


SUPPORT

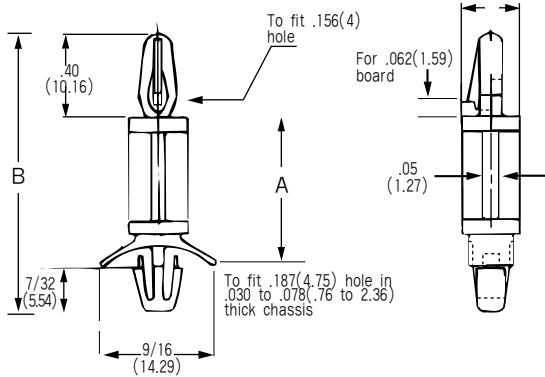
SPACER SUPPORTS

Two Styles Choose between a locking or tension barb end.



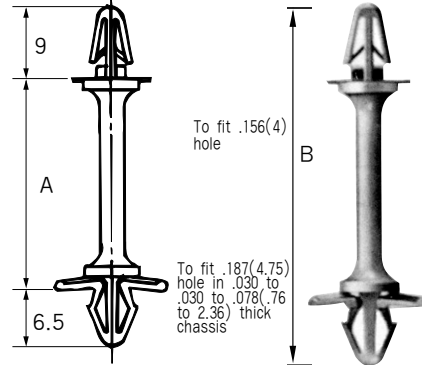
For providing needed spacing between printed circuit boards and chassis.

■ Tension Type

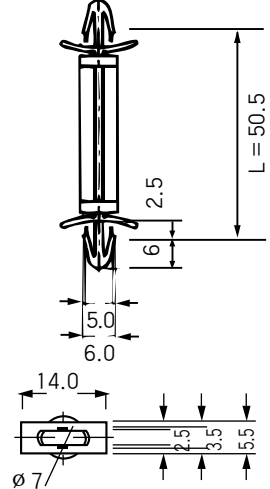


- Both ends lock by hand; no tools required
- Strong, dependable grip
- Materials: Nylon 6/6,

■ Locking Type



■ Double Tension Type



Two Materials

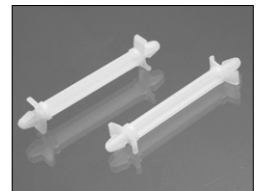
6/6 nylon-natural color with a 94V-2 flammability rating.
Fire retardant nylon-off-white color with a 94V-0 flammability rating.

Available in 12 sizes

| PART NO. | Dimensions(mm) | | BARB TYPE | | PART NO. | Dimensions(mm) | | BARB TYPE |
|----------|----------------|------|-----------|--|----------|----------------|------|-----------|
| | A | B | | | | A | B | |
| DASS-4N | 4.8 | 22.8 | Tension | | DASS-19N | 19.0 | 37.0 | Tension |
| | | 20.1 | Locking | | | | 34.5 | Locking |
| DASS-6N | 6.4 | 24.4 | Tension | | DASS-22N | 22.2 | 40.2 | Tension |
| | | 21.9 | Locking | | | | 37.7 | Locking |
| DASS-9N | 9.5 | 27.5 | Tension | | DASS-25N | 25.4 | 43.4 | Tension |
| | | 25.0 | Locking | | | | 40.9 | Locking |
| DASS-11N | 11.1 | 29.1 | Tension | | DASS-28N | 28.5 | 46.5 | Tension |
| | | 26.6 | Locking | | | | 44.0 | Locking |
| DASS-13N | 12.7 | 30.7 | Tension | | DASS-31N | 31.7 | 49.7 | Tension |
| | | 28.2 | Locking | | | | 47.2 | Locking |
| DASS-16N | 15.8 | 33.8 | Tension | | DASS-35N | 34.9 | 52.9 | Tension |
| | | 31.3 | Locking | | | | 50.4 | Locking |

• B-50N

- Install quickly by hand
- Releasable for repairs
- Barbed Arrow mounts on both ends snap-lock into .156" (4mm) dia. holes
- Available on request with two .187" (4.75 mm) mounts or a .156/.187" (4/4.75 mm) combination

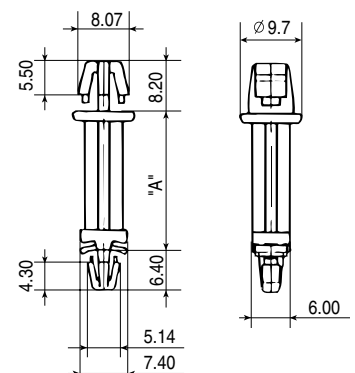


PCB SUPPORT

- MATERIAL : NYLON 66. UL 94V-2
- COLOR : NATURAL

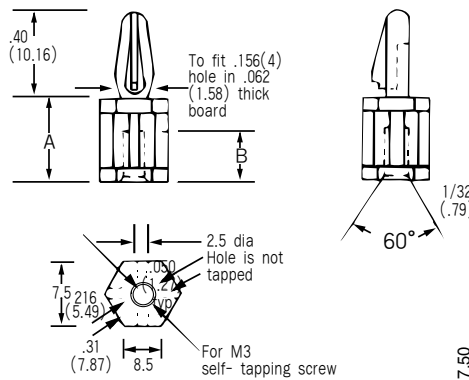
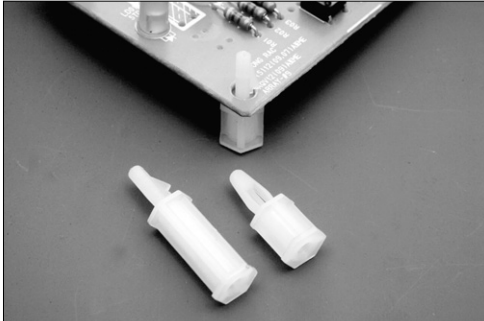
| NO | PART NO | A | B | HOLE C DIA φ | HOLE D DIA φ |
|----|----------|------|------|--------------|--------------|
| A | DPS | 15.3 | 29.3 | 7.0 | 4.0 |
| | DPSH 23 | 23.0 | 36.9 | 7.0 | 4.0 |
| B | DPS B 27 | 27.3 | 39.9 | 4.8 | 4.0 |

| PART NO | A |
|---------|--------|
| DPS-14 | 14.7mm |
| DPS-22 | 22.2mm |



SUPPORT

SCREW SUPPORT

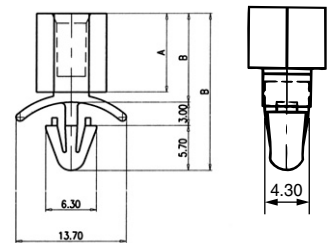


Material : Nylon 6/6

A support with minimal chassis protrusion. Ideal for slim line or limited space applications.

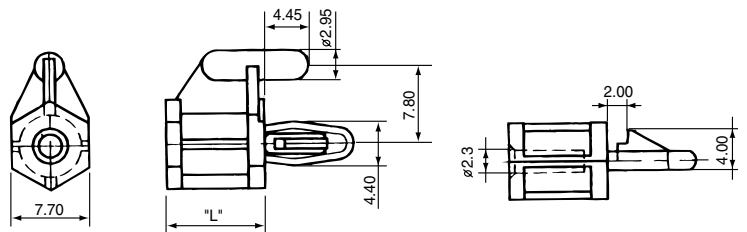
| Part No. | | Dim. A (mm) | Dim. B (mm) |
|----------|--------------|----------------|----------------|
| Natural | Flame Retar, | | |
| DASC-4N | DASC-4R | (6.2) | (5.16) |
| DASC-5N | DASC-5R | (8.0) | |
| DASC-6N | DASC-6R | (9.4) | |
| DASC-7N | DASC-7R | (11.5) | |
| DASC-8N | DASC-8R | (12.5) | |
| DASC-10N | DASC-10R | (15.7) | 7.9 |
| DASC-12N | DASC-12R | (18.8) | (7.94) |

| Part No. | A | B | C |
|-----------|----|------|----|
| DASC-H6N | 6 | 7.3 | 16 |
| DASC-H10N | 10 | 11.3 | 20 |



KEY SCREW SUPPORT

| Part No. | "L" |
|-----------|-----|
| DAKSC-6N | 9.8 |
| DAKSC-10N | 15 |



BOLT SUPPORTS

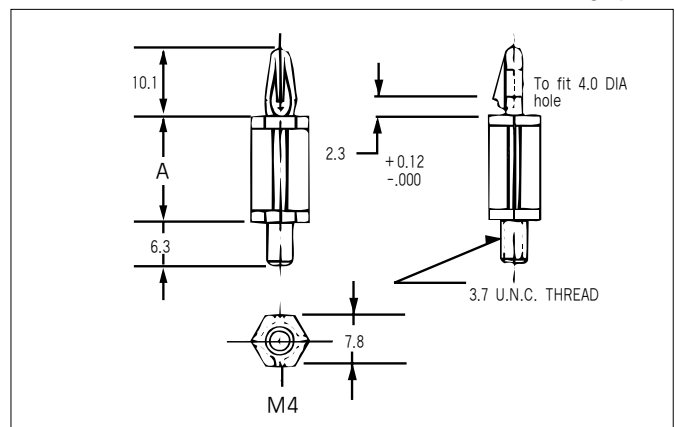


Studded Supports
for Screw Fastening

A reusable one-piece bolt it board support with a #8-32 thread for speedy installation. Requires no tools. Choice of nylon or flame retardant material.

Unit : mm

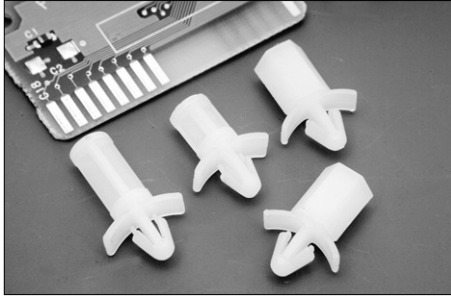
| Part No | | Nom. Dim. A |
|----------------------|----------------------|-------------------|
| U.L. 94 V-2 NYLON | U.L. 94 V-0 NYLON | |
| DABS-2N | DABS-2R | 5.0 |
| DABS-4N | DABS-4R | 6.5 |
| DABS-6N | DABS-6R | 9.5 |
| DABS-8N | DABS-8R | 12.7 |
| DABS-10N | DABS-10R | 16.0 |
| DABS-12N | DABS-12R | 20.0 |
| DABS-16N | DABS-16R | 25.0 |



Nut available upon request.

SUPPORT

CARD SUPPORT

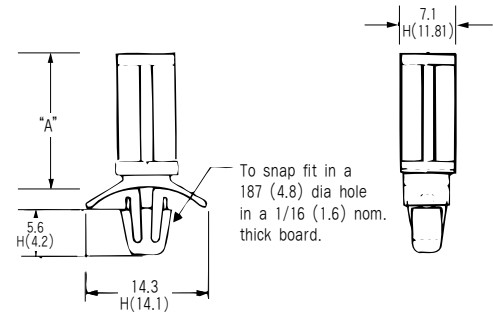


- Supports heavily loaded PC boards
- Easy to install, snap-in spacers made of high dielectric strength nylon feature a rigid support post

- Material: Nylon 6/6,
- Standard Pack: 1000 per bag

| Part No | Hole dia, | M |
|---------|-----------|-------|
| CS-H10N | 5.6 | 11.81 |
| CS-H13N | 5.6 | 11.81 |

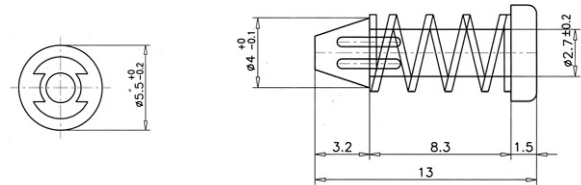
| Part no. Nylon | Part no. Flame Retardant | Dim. "A" |
|-------------------|-----------------------------|------------|
| CS4N | CS4R | 3/16(4.8) |
| CS6N | CS6R | 1/4(6.4) |
| CS9N | CS9R | 3/8(9.5) |
| CS11N | CS11R | 7/16(11.1) |
| CS13N | CS13R | 1/2(12.7) |
| CS16N | CS16R | 5/8(15.9) |
| CS19N | CS19R | 3/4(19.1) |
| CS22N | CS22R | 7/8(22.2) |
| CS-H 10N | CS-H10R | .39(10) |
| CS-H 13N | CS-H13R | .51(13.2) |



NOTE : For accurate spacing between bottom of chassis and bottom of PC board, add .10(2.5) to "A" dimension.

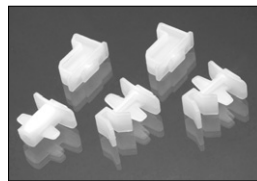
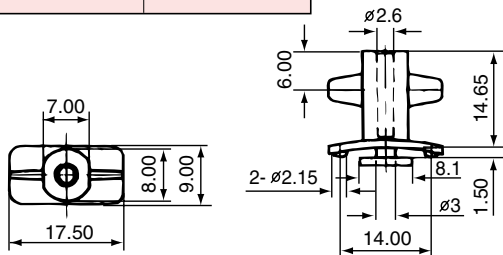
SPRING HOLDER

| PART NO. | DASH-13 |
|----------|---------|
|----------|---------|

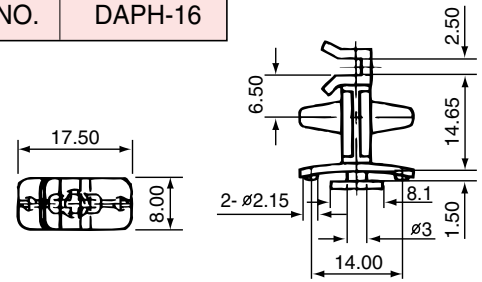


LOCK SCREW SUPPORT

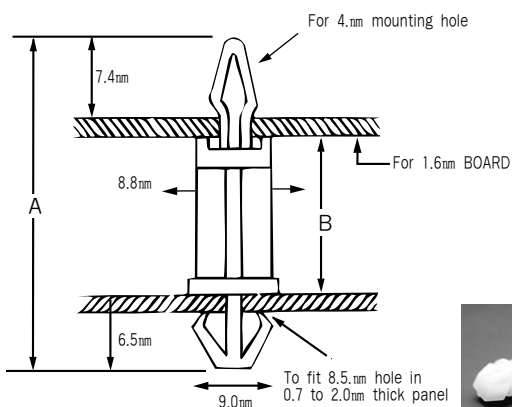
| PART NO. | DALSC-16 |
|----------|----------|
|----------|----------|



| PART NO. | DAPH-16 |
|----------|---------|
|----------|---------|



BREADTH BARD



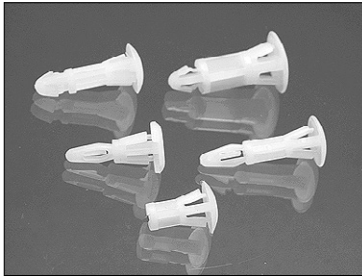
- MATERIAL : NYLON 6/6



| PART NO | DIMENSION(mm) | | Pacjage Q' TY |
|-----------|---------------|------|------------------|
| | A | B | |
| DASS-B4N | 22.2 | 6.0 | 1,000 |
| DASS-B5N | 24.0 | 8.0 | |
| DASS-B6N | 26.0 | 10.0 | |
| DASS-B8N | 29.0 | 13.0 | |
| DASS-B10N | 32.0 | 16.0 | |
| DASS-B12N | 35.0 | 19.0 | |
| DASS-B14N | 38.0 | 22.0 | |
| DASS-B16N | 41.0 | 25.0 | |
| DASS-B18N | 45.0 | 29.0 | |

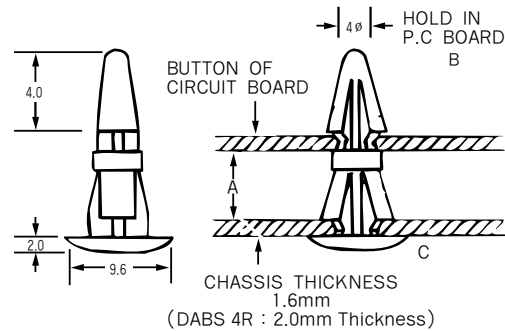
SUPPORT

● BUTTON SUPPORT



(UNIT : mm)

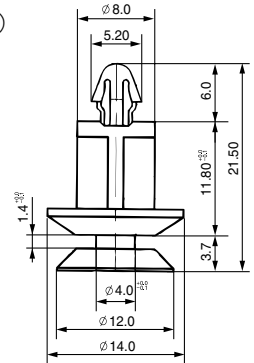
| Part No. | A | B | C |
|----------|------|---|---|
| DABS 4R | 4 | 4 | 5 |
| DABS 6R | 6 | 4 | 5 |
| DABS 8R | 8 | 4 | 5 |
| DABS 10R | 10 | 4 | 5 |
| DABS 12R | 12 | 4 | 5 |
| DABS 16R | 16 | 4 | 5 |
| DABS 22R | 22 | 4 | 5 |
| DABS 26R | 25.4 | 4 | 5 |
| DABS 32R | 31.7 | 4 | 5 |
| DABS 35R | 3.5 | 4 | 5 |



Two Materials

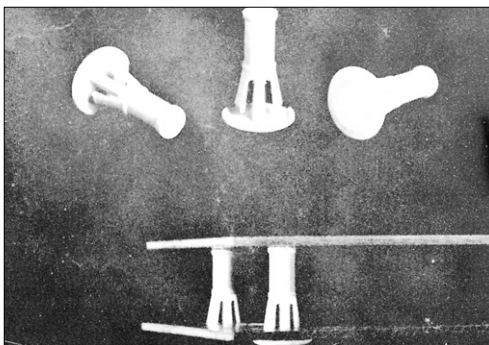
6/6 nylon-natural color with a 94V-2 flammability rating.
fire retardant nylon-off-white color with a 94V-0 flammability rating.

- Good Chassis-like appearance.
- Fixating of P.C.board for making opening is possible, by pressing with hands without tools.
- Operation is easy, production efficiency is increased.



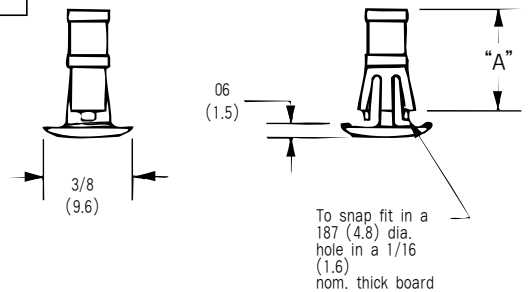
PART NO. DABS-12N

● CARD BOARD SUPPORT

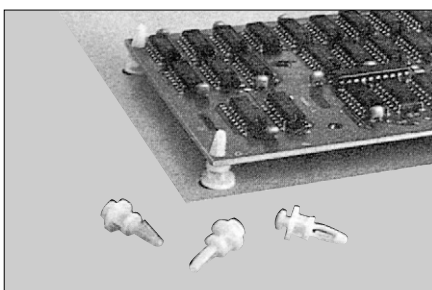


| Part No | A(mm) |
|-----------|-------|
| DACBS 4R | 4.0 |
| DACBS 6R | 6.5 |
| DACBS 8R | 8 |
| DACBS 10R | 10 |
| DACBS 12R | 12.2 |
| DACBS 16R | 16 |
| DACBS 22R | 22 |
| DACBS 26R | 26 |
| DACBS 32R | 32 |
| DACBS 35R | 35 |

- Provide additional support for heavily loaded PC boards
- Inserts from chasis underside
- Thin button head to minimum protrusion
- Material: Nylon 6/6
- Standard Pack:1000 per bag



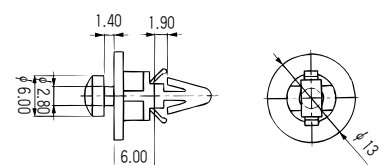
● KEY SUPPORT



- Installs quickly by hand
- Board mount end locks in place
- Chassis mount end slides into keyslot hole is easily removed for repairs or changes

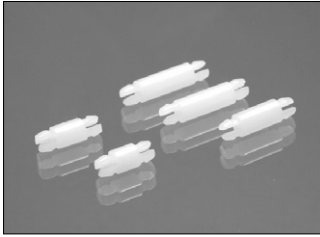
PART NO. DAKS-01

- Minimal protrusion of only .10" (2.5mm) on underside of chassis
- Material: Nylon 6/6;
- Color: Natural
- Standard Pack: 1000 per bag



SUPPORT

MINIATURE SUPPORT POST



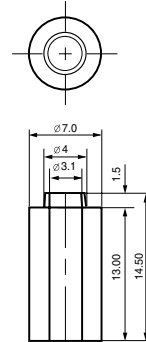
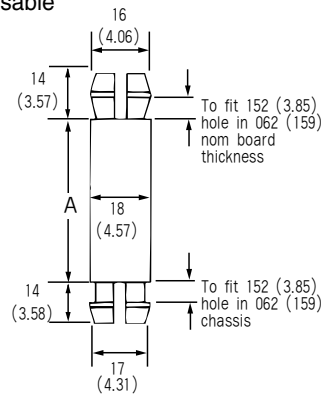
| Part No | A (inches(mm)) |
|---------|----------------|
| MSP-2N | 1/8 (3.18) |
| MSP-3N | 3/16 (4.75) |
| MSP-4N | 1/4 (6.35) |
| MSP-6N | 3/8 (9.53) |
| MSP-8N | 1/2 (12.35) |

Tolerance $\pm 0.1(25)$
Fraction $\pm 1/64$

Miniaturize packaging at
Low cost.
Install by hand with no pins
or screws
Chassis-mount head locks
permanently
Board-mount head is
releasable

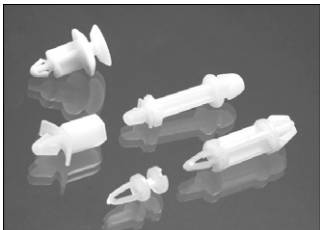
Both ends fit $.152" \pm .002"$
(3.85 \pm .05 mm) diameter
hole in $1/16"$
Material: Nylon 6/6.

Color: Natural



| PART NO. | DASH-13 |
|----------|---------|
|----------|---------|

P. C. B. SUPPORT

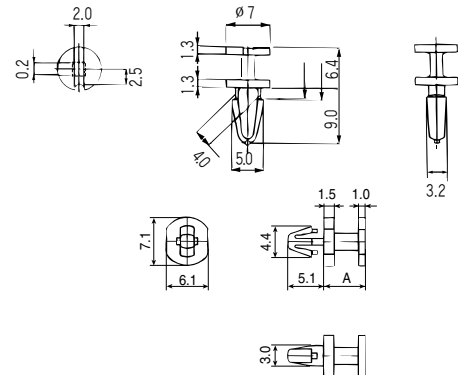


| PART NO. | DAPS 6.5 |
|----------|----------|
|----------|----------|

- Material : NYLON 6 or 66
- Color : Natural
- Hole Dia : $\varnothing 4$

| PART NO | A |
|---------|------|
| DAPS-6 | 6.0 |
| DAPS-10 | 10.0 |
| DAPS-18 | 18.0 |

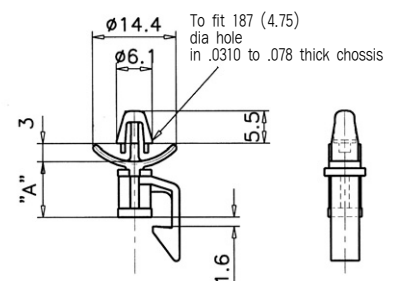
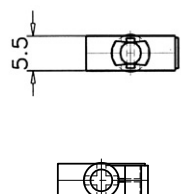
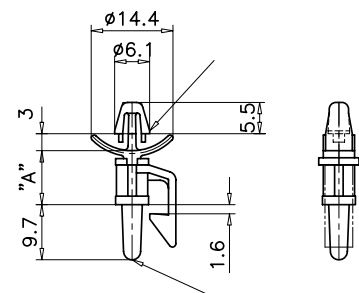
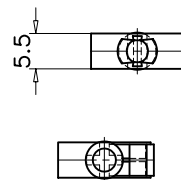
- Thickness : 1.6t
- Hole Dia : $\varnothing 3.5$



EDGE BOARD SUPPORT

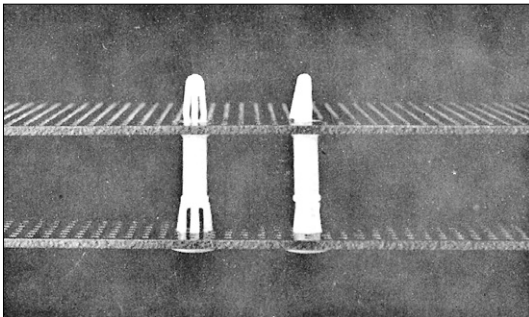
| PART No. | | Nom. Dim. |
|----------------|----------------|-----------|
| UL94 V-2 NYLON | UL94 V-0 NYLON | "A" |
| DAEBS-8N | DAEBS-8R | 8 |
| DAEBS-9N | DAEBS-9R | 9.5 |
| DAEBS-13N | DAEBS-13R | 12.7 |
| DAEBS-16N | DAEBS-16R | 16 |
| DAEBS-19N | DAEBS-19R | 19 |
| DAEBS-22N | DAEBS-22R | 22.2 |
| DAEBS-25N | DAEBS-25R | 25.4 |

| PART No. | | Nom. Dim. |
|----------------|----------------|-----------|
| UL94 V-2 NYLON | UL94 V-0 NYLON | "A" |
| DAEBS-8NS | DAEBS-8RS | 8 |
| DAEBS-9NS | DAEBS-9RS | 9.5 |
| DAEBS-13NS | DAEBS-13RS | 12.7 |
| DAEBS-16NS | DAEBS-16RS | 16 |
| DAEBS-19NS | DAEBS-19RS | 19 |
| DAEBS-22NS | DAEBS-22RS | 22.2 |
| DAEBS-25NS | DAEBS-25RS | 25.4 |



SUPPORT

● BUTTON LOCKING SUPPORT

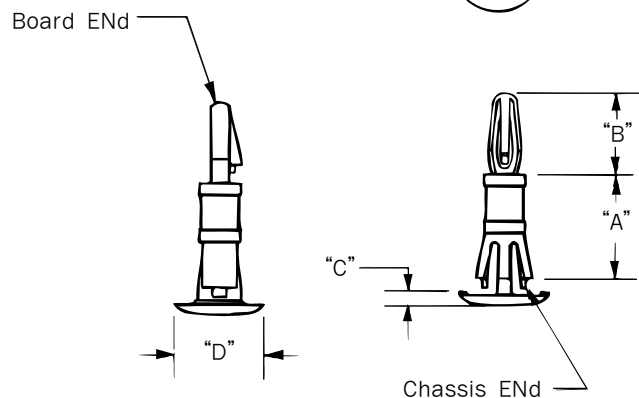


- The advantage of this support is that it inserts into both holes from chassis underside
- Spring lock support installs and releases by hand
- Minimal protrusion under chassis
- Attractive button head
- Material: Nylon 6/6,
- Color: Natural or Black
- Standard Pack: 1000 per bag



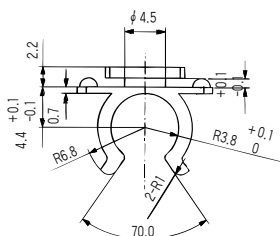
Unit:mm

| Part. # | "A" | "B" | "C" | "D" | Bd. Hold Dia. | Chss. Hole Dia. |
|---------|------|-----|-----|-----|--------------------|-----------------|
| | | | | | (1,6) Panel Thkns. | |
| BLS 6R | 6 | 9.0 | 1.5 | 9.5 | 4.0 | 5.5 |
| BLS 8R | 8 | | | | | |
| BLS 10R | 10 | | | | | |
| BLS 12R | 12 | | | | | |
| BLS 16R | 16 | | | | | |
| BLS 18R | 18 | | | | | |
| BLSS 6 | 6.4 | 8.7 | 1.0 | | 3.2 | 4.8 |
| BLSS 10 | 9.5 | | | | | |
| BLSS 12 | 12.7 | | | | | |
| BLSS 16 | 15.9 | | | | | |

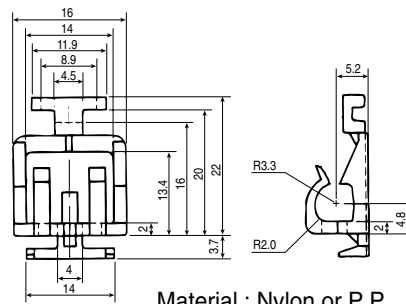


● D-COIL HOLDER

| PART NO. | DADC-1 |
|----------|--------|
|----------|--------|



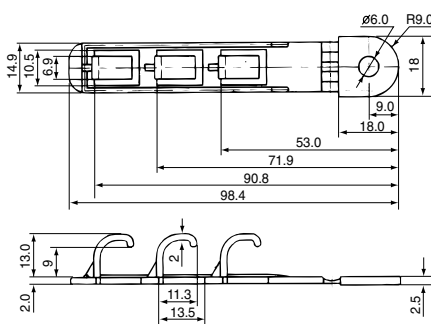
| PART NO. | DADC-2 |
|----------|--------|
|----------|--------|



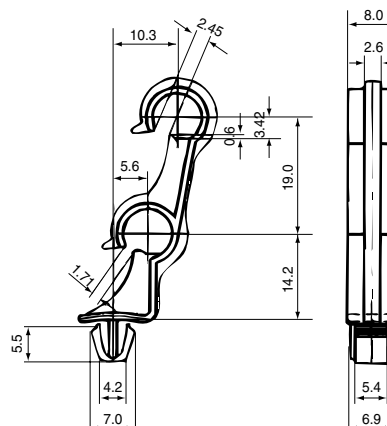
Material : Nylon or P.P



| PART NO. | DADC-98 |
|----------|---------|
|----------|---------|



| PART NO. | DADCS-32 |
|----------|----------|
|----------|----------|

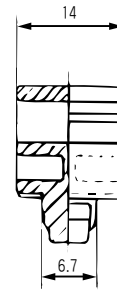
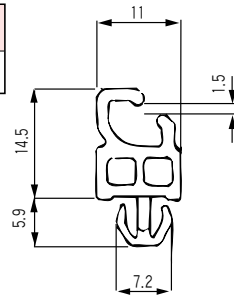


SUPPORT

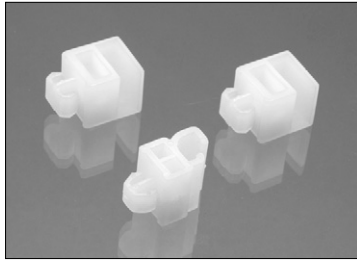
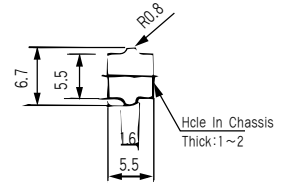
P.C.B.HOLDER

- Easily pushed into P.C.plate by hand without any tool.
- Easy to replace and efficient in productivity
- Easy to replace when required maintenance or replacement is required.
- Material : Nylon 66

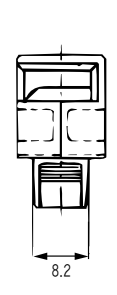
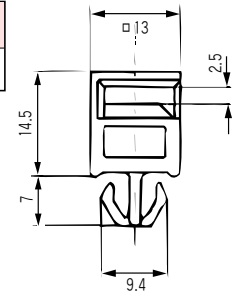
| PART NO. |
|----------|
| DAFH-A |



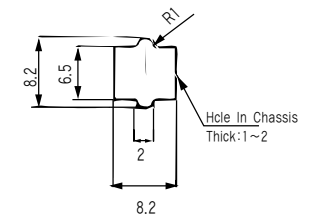
"A" Type



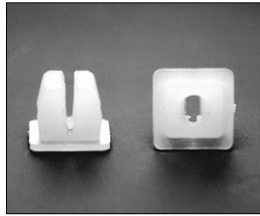
| PART NO. |
|----------|
| DAFH-B |



"B" Type

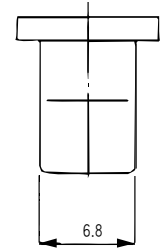
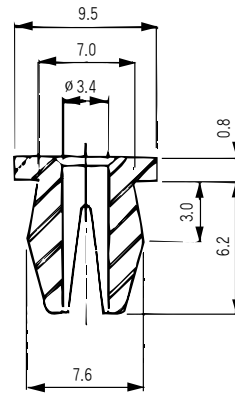


P.C.PLATE

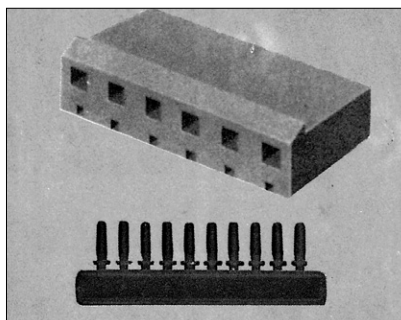


- Easily pushed into P.C.plate by hand without tool.
- Easy to replace and efficient in productivity
- Easy to replace when required maintenance or replacement.
- Material : Nylon 66

| PART NO. |
|----------|
| DAPC-7 |

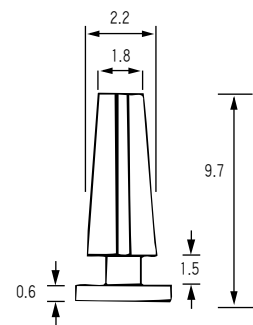


SUPPORT PIN

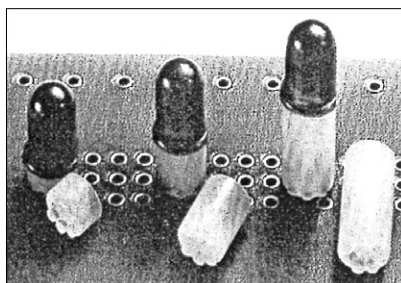


- Material : Nylon 66
- Molex HOUSING : 5239-N2

| PART NO. |
|----------|
| HSP 201 |

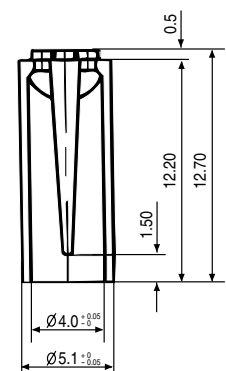
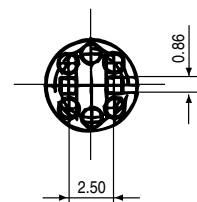


LED HOLDER



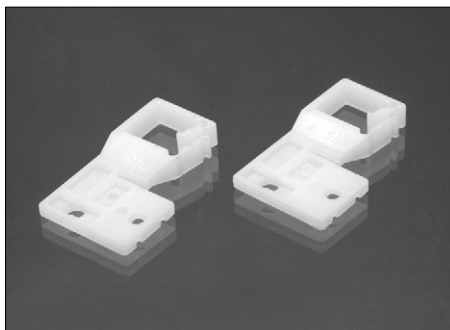
- Material : Nylon 66
- Color : Natural
- Economical assembly solution for mounting LEDs and easy insertion of LED spacers.

| PART NO. |
|----------|
| DALH-13 |



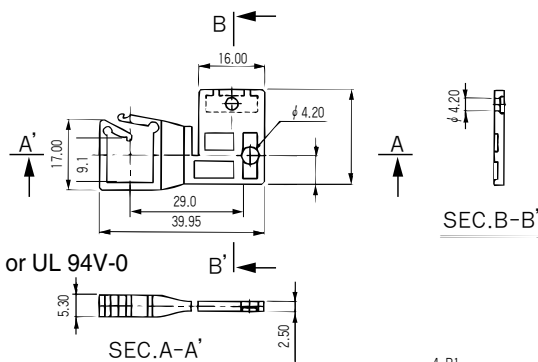
SUPPORT

● SCREW LOCK SADDLE

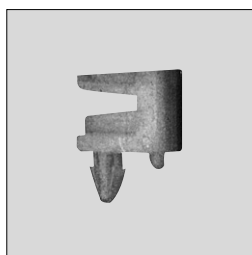


| |
|----------|
| PART NO. |
| DASC-119 |

1. Material : Nylon 66
2. Color : Natural
3. Flameability : UL 94V-2 or UL 94V-0

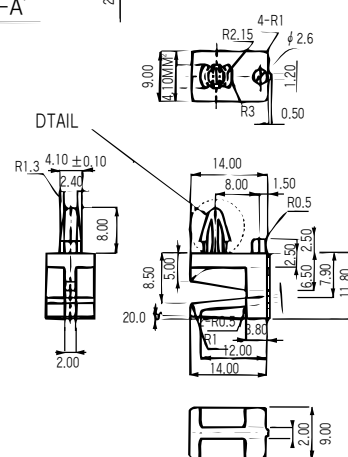


● SPACER SUPPORT

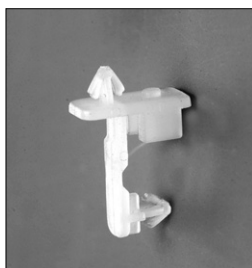


| |
|------------|
| PART NO. |
| DATLM-4757 |

1. Material : Nylon 66
2. Color : Natural
3. GENERAL TOLERANCE : ± 0.1

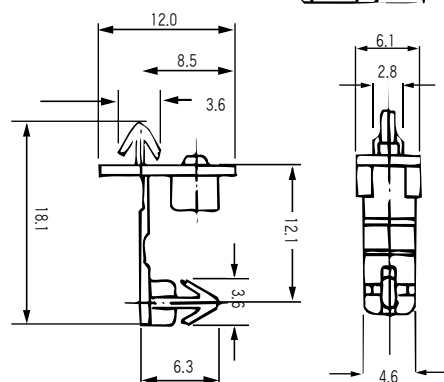


● HINGED SUPPORT

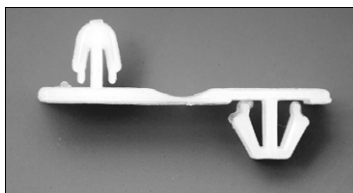


| |
|----------|
| PART NO. |
| DAHS-30 |

- Material : Nylon 6/6
- Color : Natural

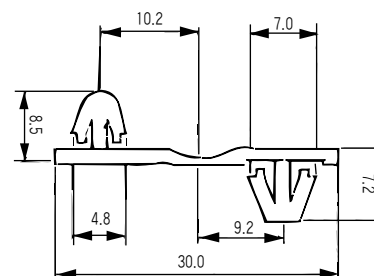


● HINGED SUPPORT



| |
|----------|
| PART NO. |
| DAHS-50 |

- Material : Nylon 6/6
- Color : Natural

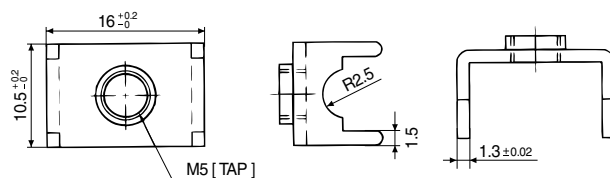


● PCB JUMPER



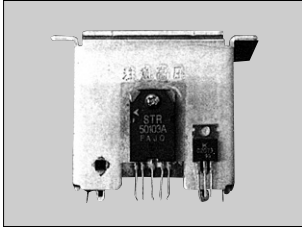
| |
|----------|
| PART NO. |
| DAPJ-9 |

- Material : C2680/1.3t

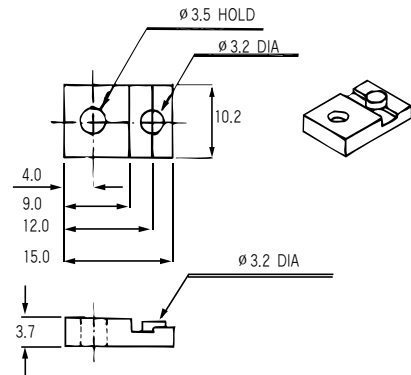


SUPPORT

● TR SUPPORT



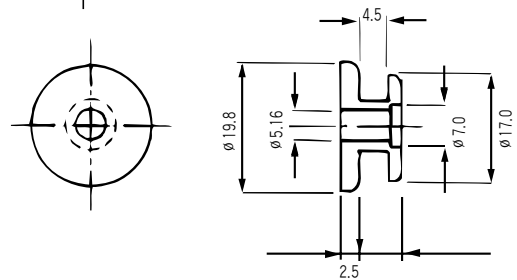
| PART NO. |
|----------|
| TRS 32 |



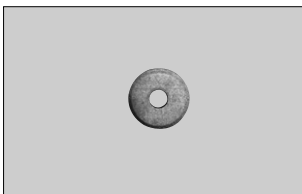
● RACK RIVET



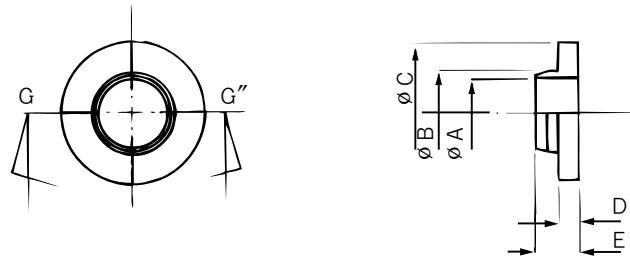
| PART NO. |
|----------|
| DAR 1987 |



● TR INSULATOR

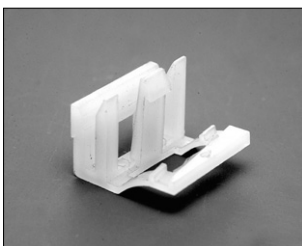


• Material : NYLON 66



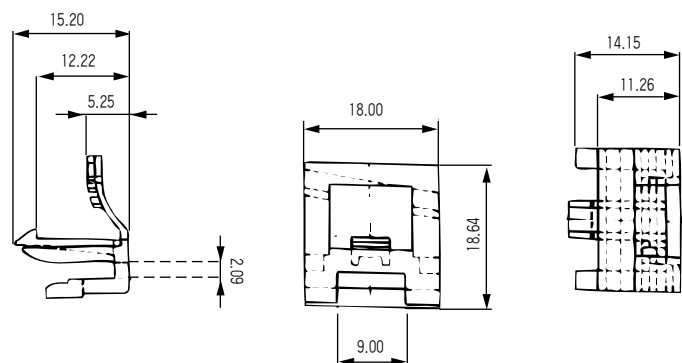
| PART NO | CORD | A | B | C | D | E |
|-----------|-----------|-----|-----|-----|-----|-----|
| DATR 2935 | INSULATOR | 2.9 | 3.5 | 5.9 | 0.8 | 2.6 |
| DATR-2945 | SPACER | 2.9 | 4.5 | 7.8 | 1.9 | 4.0 |

● PUSH CLIP



• Material : NYLON 66

| PART NO. |
|-----------|
| DAPC 1814 |

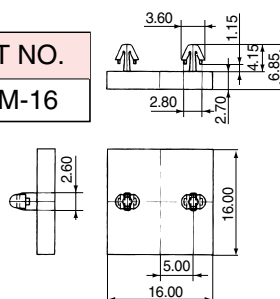


● LOCK MUONT

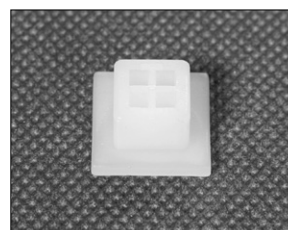


• Material : NYLON 66
Fix 3.0mm Dia, hole

| PART NO. |
|----------|
| DALM-16 |

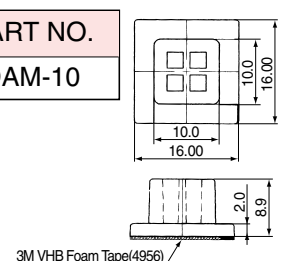


● MOUNT BOARD



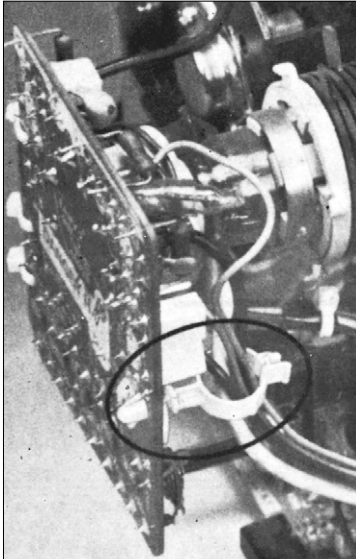
• Material : NYLON 66
with double foam tape.

| PART NO. |
|----------|
| DAM-10 |



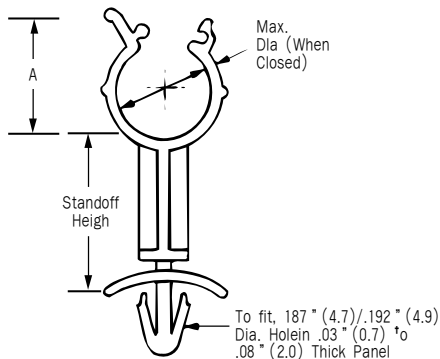
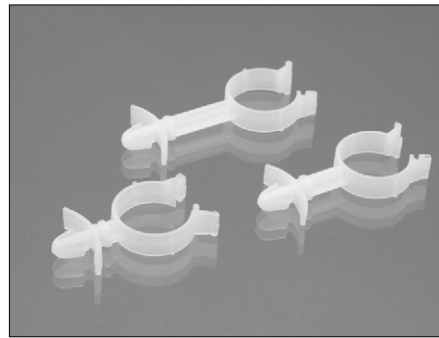
SUPPORT

● WIRE STANDOFF



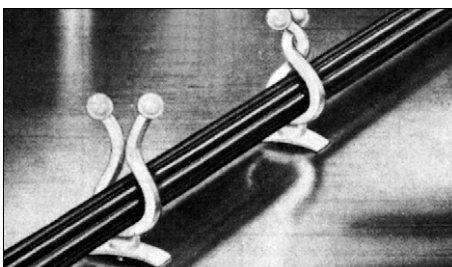
For retaining wires, cable, components or tubing away from panel or conductive chassis. Finger grip can be easily locked or unlocked for revisions. Hand installed in pre-drilled hole.

Material: Nylon Color: Natural



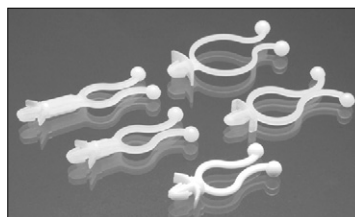
| Part Number | Maximum Diameter Inches (mm) | Height of Standoff Inches (mm) | A |
|-------------|------------------------------|--------------------------------|------|
| DAWS66 | .240 (6.1) | .25 (6.4) | 12.5 |
| DAWS612 | .240 (6.1) | .50 (12.7) | 12.5 |
| DAWS619 | .240 (6.1) | .75 (19.1) | 12.5 |
| DAWS86 | .340 (8.6) | .25 (6.4) | 15 |
| DAWS812 | .340 (8.6) | .50 (12.7) | 15 |
| DAWS819 | .340 (8.6) | .75 (19.1) | 15 |
| DAWS116 | .470 (11.9) | .25 (6.4) | 20 |
| DAWS112 | .470 (11.9) | .50 (12.7) | 20 |
| DAWS119 | .470 (11.9) | .75 (19.1) | 20 |
| DAWS206 | .790 (20.1) | .25 (6.4) | 27 |
| DAWS2012 | .790 (20.1) | .50 (12.7) | 27 |
| DAWS2019 | .790 (20.1) | .75 (19.1) | 27 |

● TWIST-LOK STANDOFF



Lifts wires of board to avoid hot components
Cable and wire bundles load and unload with a fingertip twist

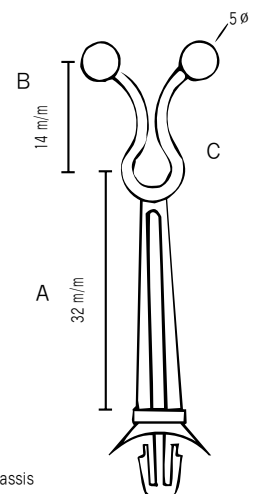
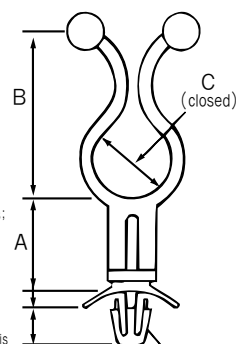
Barbed Arrow locks to chassis by hand
Material: Nylon 6/6, Color: Natural



| PART NO. |
|-----------|
| DASTL-INC |

| Part No | A | B, Ref | C.Wire Bundle Dia |
|------------|--------------|-------------|--|
| DASTL-2NA | 3/16(4.76) | .90(23) | .27(7) ± 1.58 |
| DASTL-3NA | 3/16(4.76) | | .400-500 ± 1/16 (10.16-12.7 ± 1.58) |
| DASTL-8NA | 1/2(12.7) | .98(25) | |
| DASTL-12NA | 3.4(19.05) | | |
| DASTL-16NA | 1(25.4) | | |
| DASTL-20NA | 1-1/4(31.75) | | |
| DASTL-3NB | 3/16(4.76) | | |
| DASTL-8NB | 1/2(12.7) | 1.18(29.97) | .500-600 ± 1.16 (12.7-15.24 ± 1.58) |
| DASTL-12NB | 3.4(19.05) | | |
| DASTL-16NB | 1(25.4) | | |
| DASTL-20NB | 1-1/4(31.75) | | |
| DASTL-1NC | (32) | 1.18(14) | 4.2 ø |
| DASTL-2NC | (6) | 1.18(14) | 3.5 ø |
| DASTL-3ND | (6) | 40 | 24 ø |
| DASTL-5ND | (5.0) | (34.26) | 16 ø |
| DASTL-20NE | (25.4) | (35.26) | 20 ø |

NOTE: For .187 (4.75) Arrowhead X=10(2.54) minus chassis thickness; for 156 Thickness. X=11(2.79) minus chassis thickness Add X to Dimension A for accurate spacing between bottom of PC board and top of chassis

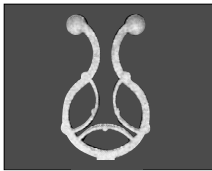
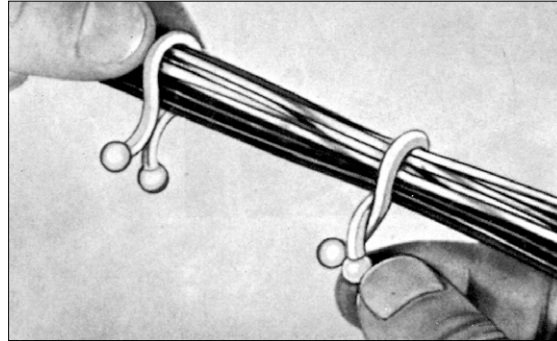


SUPPORT

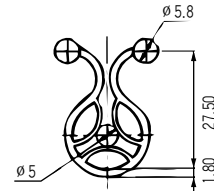
● TWIST-LOK

Nylon wire fasteners hold up to 20 lbs, tensile strength Molded with no sharp edges to cut insulator. With fingertip twist loads or unloads bundle.
Material : Nylon 6/6 Color : Natural

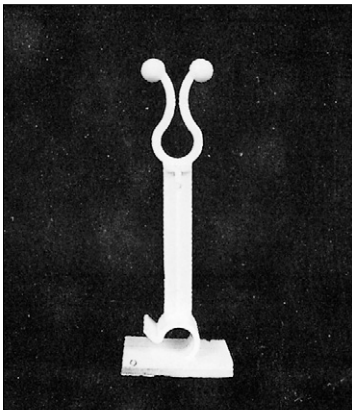
| Part No. | Dimension in mm | | Pkg. Qty |
|----------|-----------------|-------------|----------|
| | Length | Bundle Dia, | |
| DA-21 | 21.5 | 4.0 | 1000 |
| DA-23 | 26.2 | 8.2 | 1000 |
| DA-26 | 29.5 | 11.2 | 1000 |
| DA-30 | 30.8 | 14.5 | 1000 |
| DA-38 | 38.0 | 18.0 | 1000 |
| DA-40 | 40.0 | 22.0 | 1000 |



Part Number : DA-27
Material : Nylon 66
Color : Natural or Black
Flammability : UL94V-2 or 94V-0

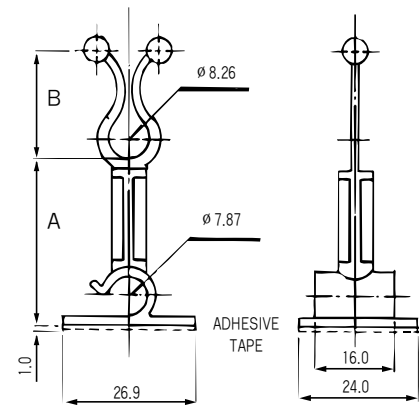


● SADDLE WIRE

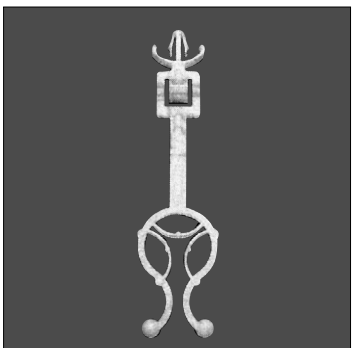


Material : Nylon 66
Color : Natural

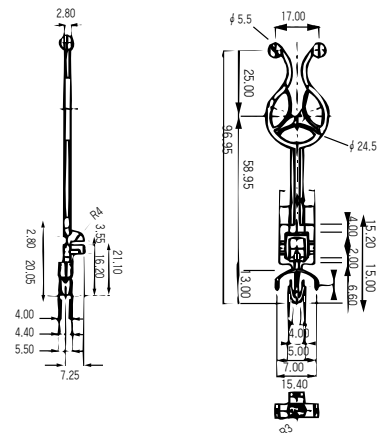
| PART NO. | A | B |
|----------|------|-------|
| DASW-01 | 50.8 | 21.64 |



● HINGED TWIST LOCK



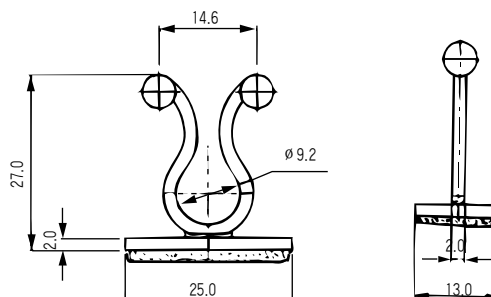
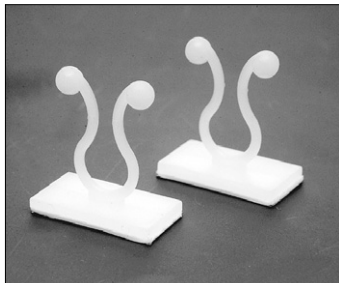
Part Number : DASTL-58
Material : Nylon 66
Color : Natural
Flammeability : UL94V-2 or 94V-0



SUPPORT

● TWIST-LOK MOUNT

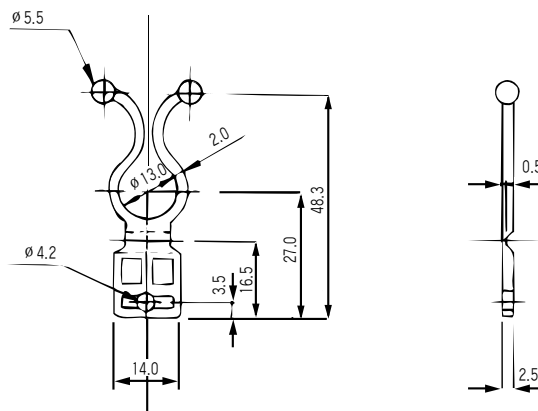
MATERIAL : NYLON 66 94V-2



PART NO.

DATLM 475

● TWIST-LOK HINGED



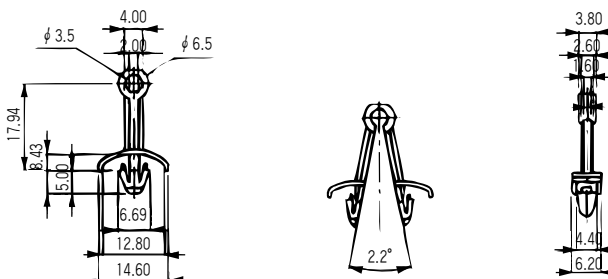
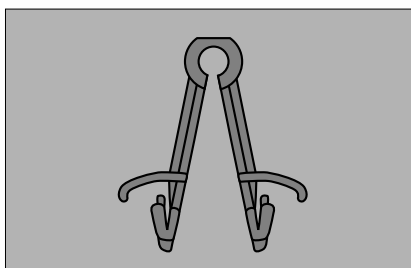
- Mounts securely with #8 (M4) screw, or a rivet
- Wires can be routed in any direction
- Simply twist to open and close for wiring changes and repairs

- Material: Nylon 6/6,
- Color: Natural
- Standard Pack: 1000 per bag

PART NO.

TLH 1348

● WIRE CLIP



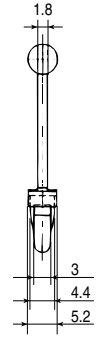
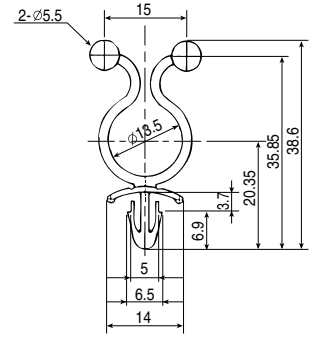
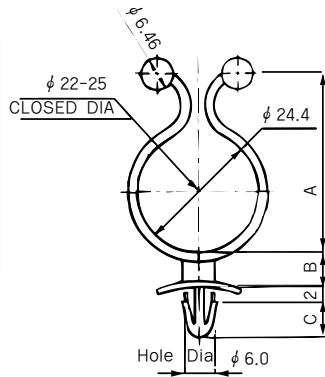
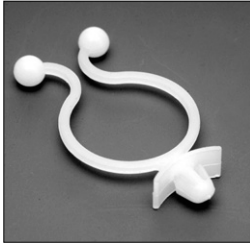
PART NO.

DAWC 354

- Material: Nylon 66
- Color: Natural

SUPPORT

● TWIST - LOK



Chassis thickness 1.9t

UNIT : mm

| PART. NO | A | B | C | Closed dia |
|----------|-------|-----|-----|-----------------------|
| DATL-250 | 36.25 | 5.5 | 9.5 | 22 ϕ ~ 25 ϕ |

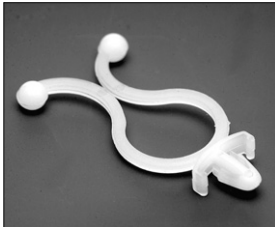
- Material : Nylon 6/6
- Color : Natural

PART NO.

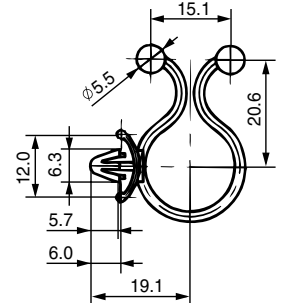
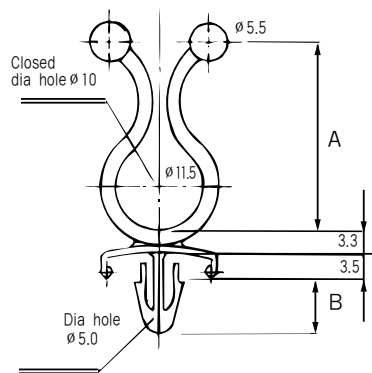
DATL-260

- CHASSIS HOLE : ϕ 5
- BUNDLE DIA : ϕ 13

● WIRE ROUTING



- Material : Nylon 66
- Color : Natural



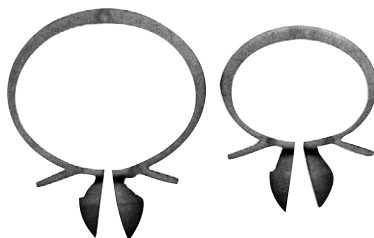
Chassis thickness : 0.8~2.0t

| PART. NO | A | B | Bundle dia hole |
|----------|-------|-----|---------------------|
| PAWR-100 | 25.15 | 7.0 | ϕ 10 \pm 1.5 |
| PAWR-160 | 34.26 | 7.0 | ϕ 16 |

PART NO.

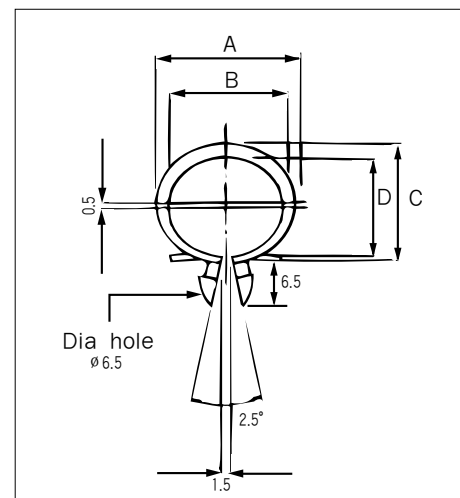
PAWR-S185

● WIRE LOCKING CLAMP



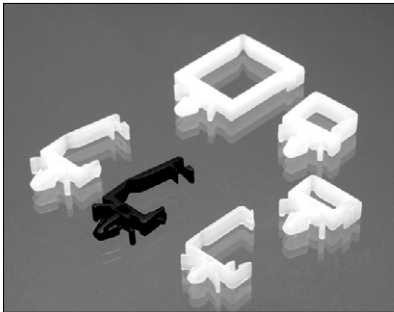
- Material : Nylon 66
- Color : Natural ϕ
- Chassis : 1.0~1.6mm

| Part No | A | B | C | D | Bundle |
|---------|------|------|----|----|--------|
| DAWLC 1 | 22.5 | 19.5 | 19 | 16 | 17 |
| DAWLC 2 | 17.5 | 14.5 | 14 | 11 | 12 |



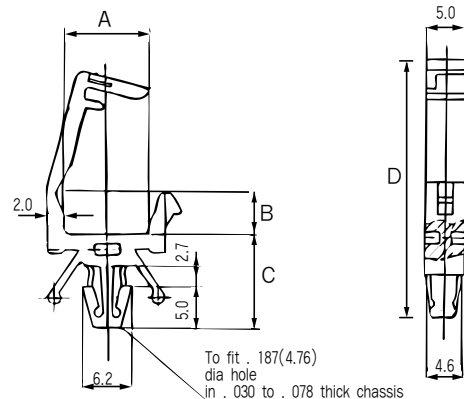
SUPPORT

● SIDE LOCKING SADDLE



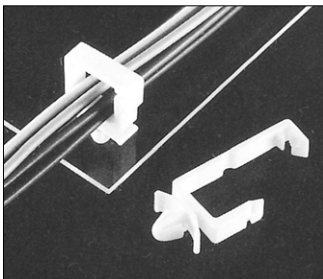
- Material: Nylon 66
- Color: Natural

Nylon Saddle for gathering and directing single or groups of cables at low cost. Two types Regular gate for easy cable entry that also prevents unintentional cable exit or Latch gate for easy cable entry and automatic locking. Finger pressure installation into 4.8 mm diameter mounting hole. Self adjusts to various panel thicknesses.



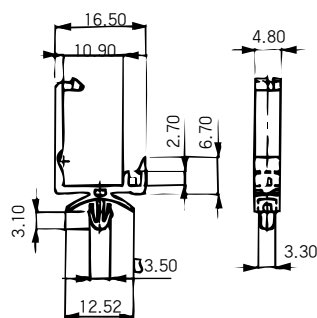
| PART NO. | DIMENSIONS(mm) | | | |
|-----------|----------------|------|------|------|
| | A | B | C | D |
| DSLS 110 | 10.7 | 5.0 | 11.7 | 18.5 |
| DSLS 111 | 16.5 | 10.0 | 11.6 | 23.5 |
| DSLS 111A | 16.4 | 10.0 | 11.8 | 24.0 |
| DSLS 112 | 18.0 | 22.2 | 12.2 | 26.5 |

● SIDE LOCKING SADDLE



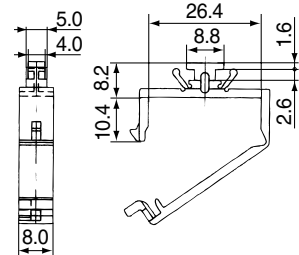
PART NO.
DSLS-100

- Material: Nylon 66
- Color: Natural
- Hole Dia : ϕ 3.5

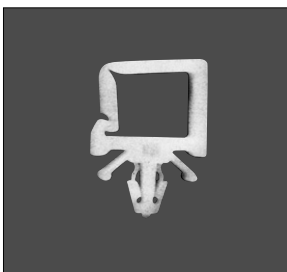


PART NO.
DAL-30

- Material: Nylon 66



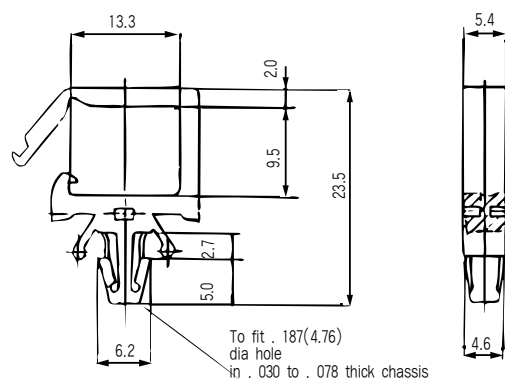
● LOCKING SADDLE



PART NO.
LS 130

- Material: Nylon 66
- Color: Natural

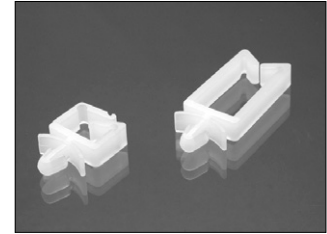
Nylon Saddle for gathering and directing single or groups of cables at low cost. Two types Regular gate for easy cable entry that also prevents unintentional cable exit or Latch gate for easy cable entry and automatic locking. Finger pressure installation into 4.8 mm diameter mounting hole. Self adjusts to various panel thicknesses.



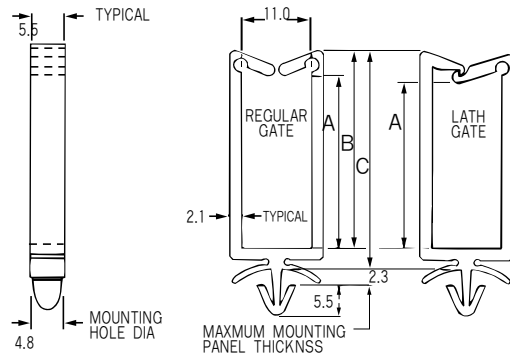
SUPPORT

● WIRE SADDLE

Nylon Saddle for gathering and directing single or groups of cables at low cost. Two types Regular gate for easy cable entry that also prevents unintentional cable exit or Latch gate for easy cable entry and automatic locking. Finger pressure installation into 4.8 mm diameter mounting hole. Self adjusts to various panel thicknesses.

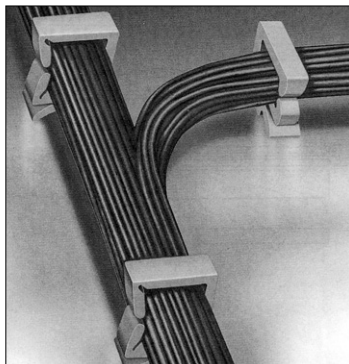


Material: Nylon 6/6



| Part No. | Type | Dimension in mm | | | Pkg. Qty. |
|----------|--------------|-----------------|------|------|-----------|
| | | A | B | C | |
| DAWS 1N | Regular Gate | 4.4 | 9.5 | 13.0 | 1000 |
| | Latch Gate | 3.6 | 9.5 | 13.0 | |
| DAWS 2N | Regular Gate | 9.9 | 14.7 | 18.2 | 1000 |
| | Latch Gate | 9.1 | 14.7 | 18.2 | |
| DAWS 3N | Regular Gate | 19.0 | 23.8 | 27.0 | 1000 |
| | Latch Gate | 18.2 | 23.8 | 27.0 | |
| DAWS 4N | Regular Gate | 27.0 | 31.7 | 35.0 | 1000 |
| | Latch Gate | 26.2 | 31.7 | 35.0 | |

● WIRE SADDLE



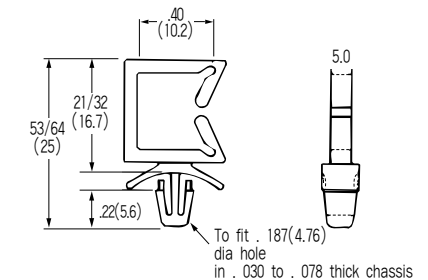
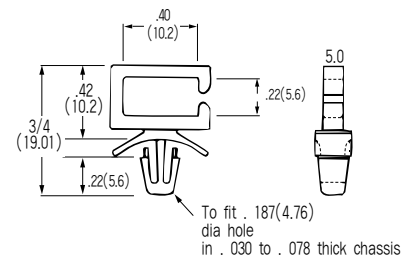
Routes cables quickly and easily.
Install by hand.
Material: Nylon 6/6

PART NO.

DAWS - 1NA

PART NO.

DAWS - 2NA



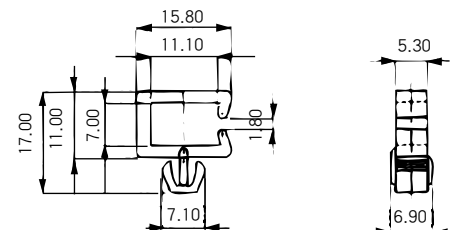
● WIRE SADDLE



MATERIAL : NYLON 66 94V-2

PART NO.

DAWS 711

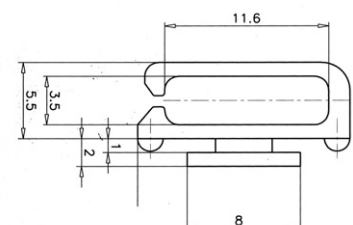
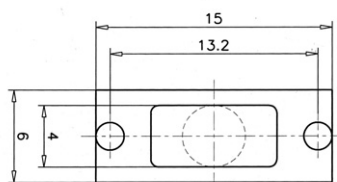


● LOCK SADDLE

PART NO.

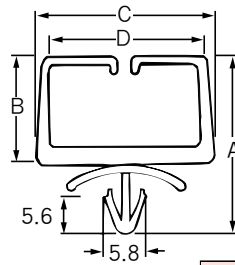
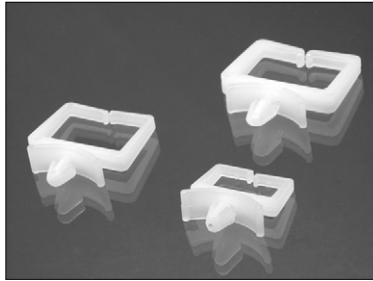
DALS-10

Material: Nylon 6/6



SUPPORT

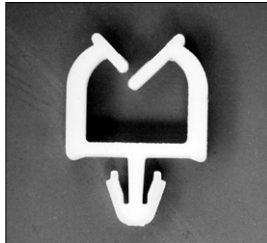
● WIRE SADDLE



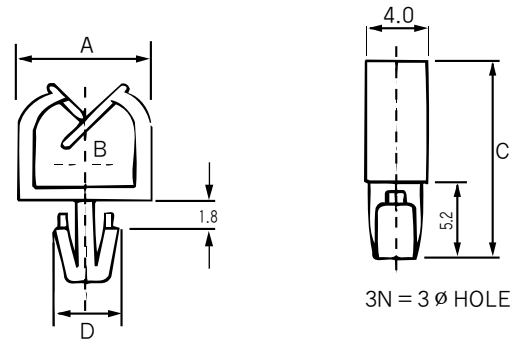
- Material : NYLON 66
- Color : Nataral

| PART NO. | DIMENSION(mm) | | | | Hole dai |
|----------|---------------|------|------|------|----------|
| | A | B | C | D | |
| DWAS-1NB | 21.0 | 11.5 | 20.0 | 15.5 | 4.8mm |
| DWAS-4NB | 27.7 | 17.3 | 25.0 | 21.0 | 4.8mm |
| DWAS-5NB | 30.6 | 19.0 | 28.5 | 22.5 | 5.5mm |
| DWAS-6NB | 33.0 | 21.8 | 31.0 | 25.0 | 5.5mm |

● MICRO WIRE SADDLE



- Use on densely packed PC boards and other limited space applications
- Snaps into a.07" (1.8mm) diameter hole in a 1/16" (1.6mm) thick board
- Holds up to ten 26 guage wires (1/32" [.8mm] outside diameter)
- Wire bundle installs simply by pressing down on retaining arms which flex to accept load than spring back into place
- Material: Nylon 6/6
- Color: Natural
- Standard Pack: 1000 per bag



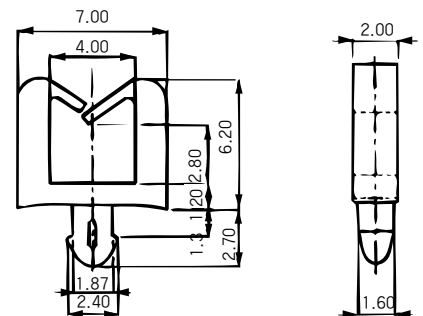
| PART NO. | DIMENSION(mm) | | | |
|----------|---------------|-----|------|-----|
| | A | B | C | D |
| DAMWS-1N | 9.0 | 6.3 | 12.4 | 4.3 |
| DAMWS-2N | 10.5 | 7.7 | 14.3 | 4.3 |
| DAMWS-3N | 9.0 | 8.0 | 14.3 | 3.7 |

● DAMWC-1S

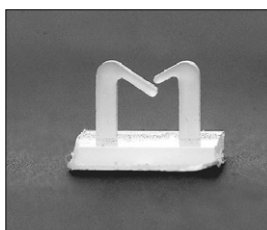


| PART NO. |
|----------|
| DAMWC-1S |

- Material : NYLON 66
- Color : Natural

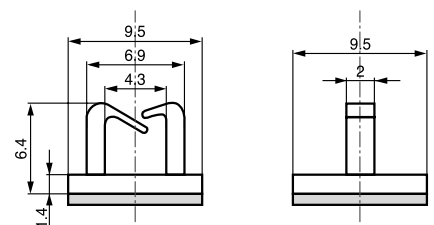


● ADHESIVE MICRO WIRE SADDLE



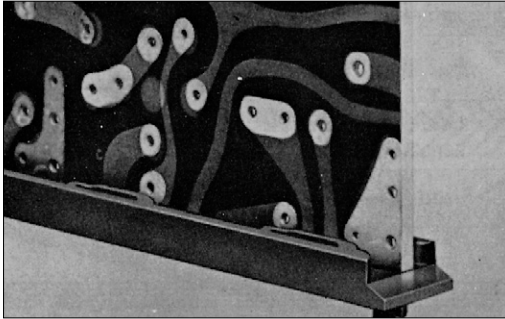
| PART NO. |
|-----------|
| DAMWC-ISA |

- Material : NYLON 66
- Double adhesive Tape



SUPPORT

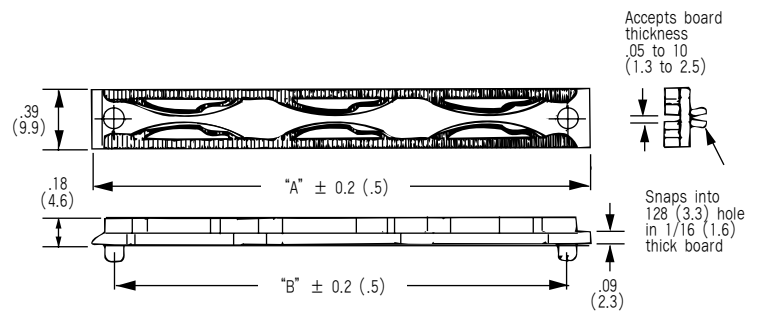
TENSION RACK CARD GUIDE



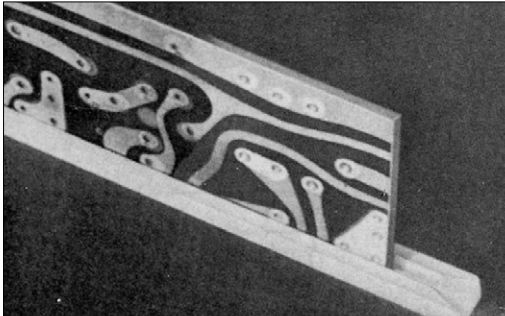
- Snap-mounts to metal, wood or plastic chassis or machine casing

- Material: Polycarbonate,
- Color: Black
- Standard Pack: 500 per bag

| Part No. | Dim. "A" | Dim. "B" |
|------------|-----------|----------|
| TRCG-3.300 | 3.3(83.8) | 3(76.2) |

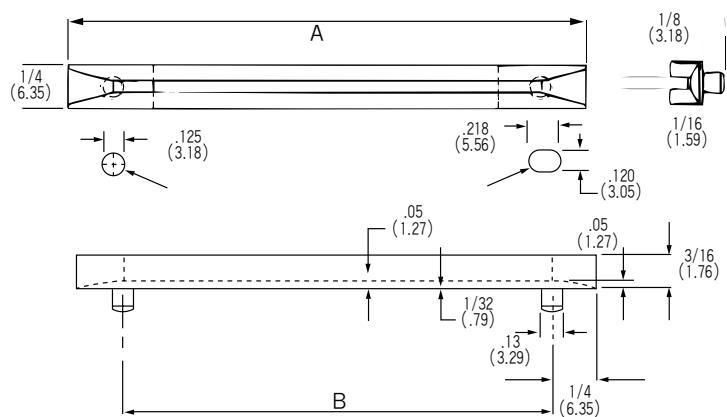


CARD GUIDES



- For quick installation, insert rear pin into .120" x .218" (3.05 x 5.54mm) slot and snap front pin into .125" (3.18mm) dia. hole

- Material: Nylon6/6,
- Color: Natural



| Part No. | Dim.A | Dim.B |
|----------|--------|-------|
| DCG-1 | 76.20 | 63.50 |
| DCG-2 | 101.62 | 88.60 |
| DCG-3 | 113.6 | 88.60 |

Tolerance ± .01(.25)

CARD GUIDE

| PART NO. |
|----------|
| DCG-B1 |

- Material : NYLON 66
- Color : Natural

