

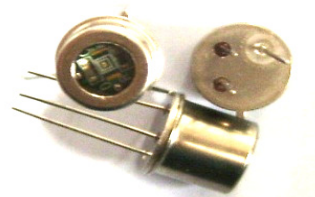
UV Sensor Module

GUVC-T21GH



Features

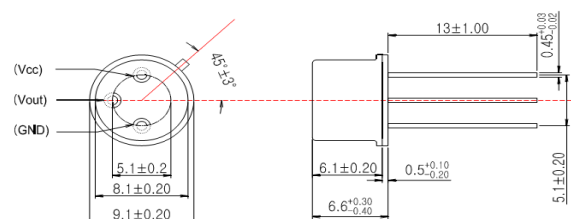
Single Supply Voltage Operation
Voltage Output
High Sensitivity and Good Solar Blindness
Small and Compact Size



Applications

Pure UV-C Monitoring
Sterilization Lamp Monitoring

Outline Diagrams and Dimensions(unit: mm)



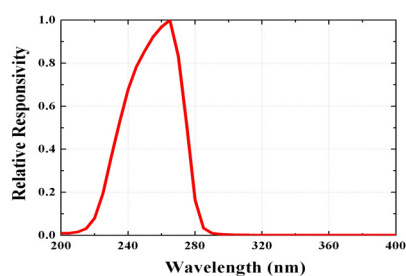
Absolute Maximum Ratings

Parameter	Symbol	Min.	Max.	Unit	Remark
Storage Temperature	T_{st}	-40	90	°C	
Operating Temperature	T_{op}	-30	85	°C	
Supply Voltage	V_{cc}		5.5	V	
Soldering Temperature	T_{sol}		260	°C	within 10 sec.

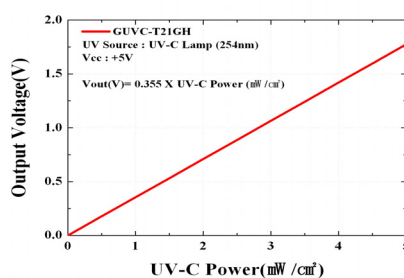
Characteristics (at 25°C)

Parameter	Symbol	Min.	Typ.	Max.	Unit	Remark
Supply Voltage	V_{cc}	1.8		5.5	V	DC
Supply Current	I_Q		50		μA	
Responsivity	R_p		0.6		mV/nW	at 254 nm
Spectral Detection Range	λ	220		280	nm	10% of R_p
Output Voltage	V_{out}		0.355		V	1 mW/cm ²
Offset Voltage	V_{off}		0.01		V	
Detection Power Range	P	0		14.1	mW/cm ²	$V_{cc}=5V$
Rising Time	T_r		3		ms	

Responsivity Curve



Output Voltage along UV Power



Caution ESD can damage the device hence please avoid ESD.